



## Weston, 258 Homestead Road

### LOVELY LIFESTYLE

This stunning home is now available for purchase, offering a unique opportunity to own a magnificent lifestyle property in a sought-after location close to both Oamaru & Weston. Situated on 3.549ha & set well back from the road, with the potential to subdivide multiple blocks (subject to council approval). This spacious, 3 double bedroom Fraemohs home has a well-designed layout for those seeking ample space for comfortable family living & a warm & inviting atmosphere. With a new heat pump to keep you warm in the winter and cool in the summer.

The interior is a seamless blend of modern elegance & timeless charm. The well-appointed kitchen has plenty of storage options & looks out over the manicured lawn & gardens. There is 1 bedroom & separate toilet downstairs, with the other 2 bedrooms, family bathroom & second separate toilet upstairs.

The double garage has an attached utility room, & there is a large open double bay shed



LAND 3.55 ha

**For Sale**

Buyer Enquiry Over \$895,000

**Contact**

**Mitchell Laughton**

0273518118

mitchell@ljohnamaru.co.nz



**Disclaimer:** All information contained therein is gathered from relevant third parties sources. We cannot guarantee or give any warranty about the information provided. Interested parties must rely solely on their own enquiries.

**LJ Hooker Oamaru**

**(03) 434 9014**

Robertson Real Estate Limited



with a small tack room, as well as the bonus of a 3-hole mini putting course for the avid golfer. The property's expansive land area provides endless possibilities for outdoor activities & entertainment. Whether you envision expanding a beautiful, private garden oasis, practising your putting, or want room for a pony, calves or lambs, the options are truly limitless.

Located in the highly desirable area of Weston, this property offers a private, peaceful & serene lifestyle while still being conveniently close to all amenities. Enjoy the tranquillity of country living while having easy access to schools, shops & still have that rural feel.

This property presents an incredible opportunity for astute buyers looking to secure their dream home. Don't miss out on this chance to own a slice of paradise in Weston.

Contact us today to arrange a private viewing & experience the beauty & potential of 258 Homestead Road firsthand.

Buyer Enquiry Over \$895,000

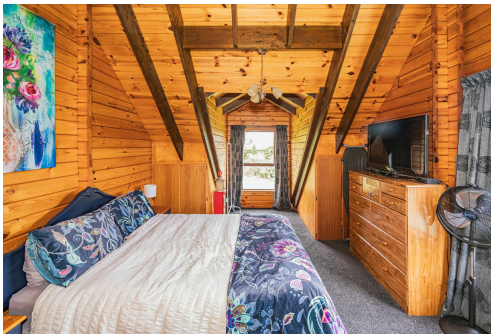
Contact Mitchell Laughton at 027 351 8118

## More About this Property

Property ID	V39GF3
Property Type	Lifestyle
Land Area	3.549 ha
Including	Toilets (2)
Licensed Real Estate Agents (REAA2008)	

**Mitchell Laughton 0273518118**  
Rural Specialist | [mitchell@ljhoamaru.co.nz](mailto:mitchell@ljhoamaru.co.nz)

**LJ Hooker Oamaru (03) 434 9014**  
Robertson Real Estate Limited  
193 Thames Street, OAMARU 9400  
[oamaru.ljhooker.co.nz](http://oamaru.ljhooker.co.nz) | [info@ljhoamaru.co.nz](mailto:info@ljhoamaru.co.nz)



**Disclaimer:** All information contained therein is gathered from relevant third parties sources. We cannot guarantee or give any warranty about the information provided. Interested parties must rely solely on their own enquiries.

**LJ Hooker Oamaru**  
**(03) 434 9014**  
Robertson Real Estate Limited