



Timaru, - Daniels Road

So Close To Town

Live in town and run your rural property with a 17-hectare bare land block, just minutes away from the town boundary. Nestled in the heart of a farming community. This land presents a canvas for your architectural aspirations. Whether it's a cozy cottage or a grand estate, seize the opportunity to design a home perfectly tailored to your lifestyle.

Sea Views: Imagine waking up to the sight of the ocean stretching before you. Build your dream home and relish in panoramic sea and mountain vistas.

Cattle Yards & Good Fencing: Calling all farmers! This property comes equipped with well-maintained cattle yards and sturdy fencing, providing a secure environment for stock to thrive.

Country Water Supply: Enjoy the convenience of a reliable country water source, ensuring your stock are watered throughout the seasons.



Disclaimer: All information contained therein is gathered from relevant third parties sources. We cannot guarantee or give any warranty about the information provided. Interested parties must rely solely on their own enquiries.



LAND 17.25 ha

For Sale

Enquiries Over \$599,000

Contact

Murray Groundwater

027 223 8185

murray.timaru@ljhooker.co.nz

LJ Hooker Timaru

(03) 688 3029

Enting Real Estate Limited

Duck Pond: This property boasts a fantastic duck pond with trees to shelter.

Price is plus gst, if any.

Interested? Then contact me to view!

Disclaimer:

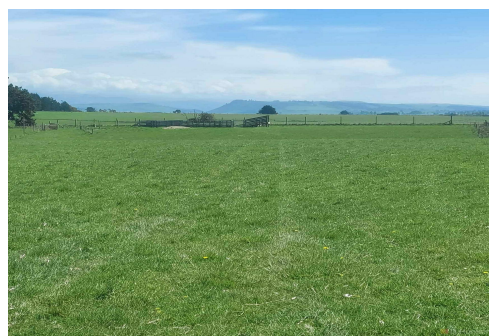
This information has been supplied by the owners and Corelogic. LJ Hooker Timaru, Geraldine and Waimate are merely passing over this information as supplied to us. We cannot guarantee its accuracy and reliability as we have not checked, audited or reviewed the information. All intending purchasers are advised to conduct their own due diligence investigation into this information. To the maximum extent permitted by law, we do not accept any responsibility to any part for the accuracy or use of the information herein. Enting Real Estate Limited Licensed (REAA 2008).

More About this Property

Property ID	157DGTA
Property Type	Bare Land
Land Area	17.25 ha
Licensed Real Estate Agents (REAA2008)	

Murray Groundwater 027 223 8185
Principal | murray.timaru@ljhooker.co.nz

LJ Hooker Timaru (03) 688 3029
Enting Real Estate Limited
51 Church Street, TIMARU 7910
timaru.ljhooker.co.nz | timaru@ljhooker.co.nz



Disclaimer: All information contained therein is gathered from relevant third parties sources. We cannot guarantee or give any warranty about the information provided. Interested parties must rely solely on their own enquiries.

LJ Hooker Timaru
(03) 688 3029
Enting Real Estate Limited