



Omeo, 490 Great Alpine Road

COUNTRY LIVING ON 10 ACRES



LAND 10 acre

For Sale
\$420,000

Contact
Kelly Quirke
0427 064 816
kquirke@ljhookerbairnsdale.com.au
Steve Holmes
0408 524 892
sholmes@ljhookerbairnsdale.com.au

Capturing the very essence of picturesque rural living, this charming country residence is perfectly situated on approximately 10 acres, adjoined by Crown Land natural bushland. With breathtaking views of the surrounding rolling hills and back towards the township of Omeo, this property offers a peaceful rural retreat, yet it's only a short 5-minute drive to Omeo's town centre, providing the ideal balance of seclusion and convenience.

The homestead itself is a delightful blend of rustic charm and practicality. The original section features an open country kitchen, a cosy lounge area complete with wood heating and reverse cycle air conditioning, ensuring comfort throughout the seasons. There are two bedrooms in this part of the home, one of which has been completely replastered. In addition, a generous extension was added in the 1980s, featuring a large lounge with a wood heater and two spacious bedrooms, providing ample space for family or guests. While the bathroom is in need of an update, the home also includes a laundry at the entrance with a bath for added convenience.



LJ Hooker Bairnsdale
(03) 5152 4172

Disclaimer: All information contained therein is gathered from relevant third parties sources. We cannot guarantee or give any warranty about the information provided. Interested parties must rely solely on their own enquiries.

Recent improvements to the original part of the home include a new roof, new gutters, and the installation of colorbond cladding to the exterior walls, ensuring durability and low maintenance. Outside, the front verandah provides the perfect place to unwind and soak in the tranquil surroundings of this idyllic rural escape.

The property also features a large steel-frame shed with power and lighting, ideal for storage or a workshop space. The land is cleared for grazing and gently undulates, with a dam at the front providing water for stock. Additionally, the property spans two titles and includes an extra grazing lease, offering further opportunity for agricultural pursuits.

This exceptional property presents a unique opportunity to embrace the beauty and peace of rural living, while still being close to the amenities of Omeo. Contact us today to arrange an inspection of this special property and discover everything it has to offer.

More About this Property

Property ID	181ZFBF
Property Type	Farmlet
Land Area	10 acre
Including	Air Conditioning Toilets (2) Deck

Kelly Quirke 0427 064 816

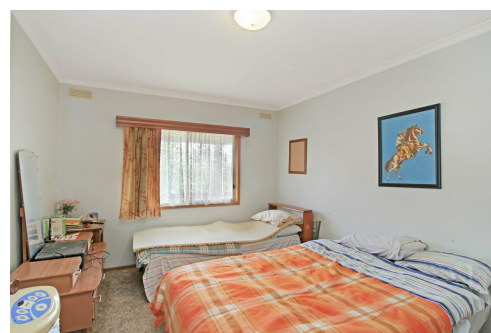
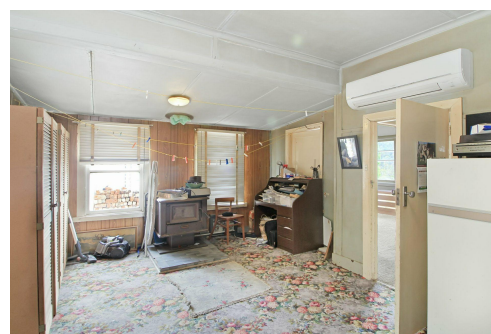
Sales Consultant | kquirke@ljhookerbairnsdale.com.au

Steve Holmes 0408 524 892

Officer in Effective Control/Director/Principal |
sholmes@ljhookerbairnsdale.com.au

LJ Hooker Bairnsdale (03) 5152 4172

195 Main Street, BAIRNSDALE VIC 3875
bairnsdale.ljhooker.com.au | bairnsdale@ljhookerbairnsdale.com.au



Disclaimer: All information contained therein is gathered from relevant third parties sources. We cannot guarantee or give any warranty about the information provided. Interested parties must rely solely on their own enquiries.

LJ Hooker Bairnsdale
(03) 5152 4172

490 Great Alpine Road, Omeo

This floor plan including furniture, fixture measurements and dimensions are approximate and for illustrative purposes only.
LJ Hooker gives no guarantee, warranty or representation as to the accuracy and layout.
All enquiries must be directed to the agent, vendor or party representing this floor plan.



LJ Hooker Bairnsdale
(03) 5152 4172

Disclaimer: All information contained therein is gathered from relevant third parties sources.
We cannot guarantee or give any warranty about the information provided. Interested parties must rely solely on their own enquiries.