



## Oamaru, 11A Woolshed Road

### AFFORDABLE RURAL RETREAT



LAND 4.00 ha

**For Sale**

Buyer Enquiry Over \$589,000

**Contact**

**Stephen Robertson**

0274 731 112

stephenr@ljoamaru.co.nz

**Mitchell Laughton**

0273518118

mitchell@ljoamaru.co.nz

Just 10 minutes south of Oamaru you will escape to 11A Woolshed Road Reidston, a charming lifestyle property perfect for those looking for a peaceful rural retreat. This property features 2 bedrooms, 1 bathroom, and a spacious carport.

Situated on a generous 4-hectare block of land looking out to the Kakanui Rangers, this property offers plenty of space for outdoor activities and enjoying the beautiful countryside. The building area is 50sqm built by cozy homes in 2023, providing a cozy and comfortable living space.

With a price guide of Buyer Enquiry Over \$589,000, this property offers great value for those looking to escape the hustle and bustle. Don't miss out on this opportunity to own your own piece of paradise in Reidston. Contact us today to arrange a viewing!

For Sale by Deadline closing on Tuesday, 18 June 2024 at 4.00pm, at LJ Hooker, 193



**LJ Hooker Oamaru**

**(03) 434 9014**

Robertson Real Estate Limited

**Disclaimer:** All information contained therein is gathered from relevant third parties sources.

We cannot guarantee or give any warranty about the information provided. Interested parties must rely solely on their own enquiries.



Thames Street, Oamaru (unless sold prior).

Buyer Enquiry Over \$589,000

Contact Stephen Robertson 0274 731 112 or Mitchell Laughton 027 351 8118

## More About this Property

<b>Property ID</b>	V6XGF3
<b>Property Type</b>	Lifestyle
<b>Land Area</b>	4.0001 ha
<b>Licensed Real Estate Agents (REAA2008)</b>	

### Stephen Robertson 0274 731 112

Principal / Property Consultant | [stephenr@ljhoamaru.co.nz](mailto:stephenr@ljhoamaru.co.nz)

### Mitchell Laughton 0273518118

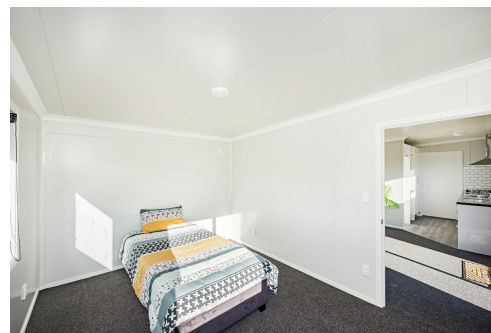
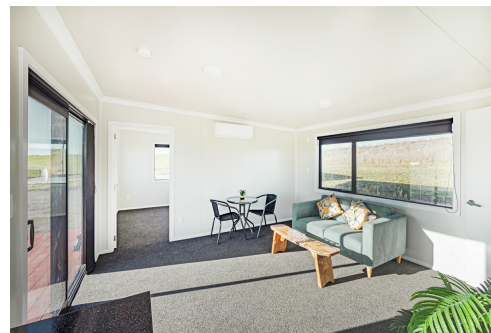
Rural Specialist | [mitchell@ljhoamaru.co.nz](mailto:mitchell@ljhoamaru.co.nz)

### LJ Hooker Oamaru (03) 434 9014

Robertson Real Estate Limited

193 Thames Street, OAMARU 9400

[oamaru.ljhooker.co.nz](http://oamaru.ljhooker.co.nz) | [info@ljhoamaru.co.nz](mailto:info@ljhoamaru.co.nz)



**LJ Hooker Oamaru**  
**(03) 434 9014**  
Robertson Real Estate Limited

**Disclaimer:** All information contained therein is gathered from relevant third parties sources. We cannot guarantee or give any warranty about the information provided. Interested parties must rely solely on their own enquiries.