



## Matamata, 590 Wardville Road

Runoff, Maize, Equine - Under Contract

Nestled in the picturesque landscape of Matamata, 590 Wardville Road unveils a remarkable opportunity to embrace rural living at its finest. Spread across 29.36 hectares (approx.) of pristine land, this property boasts flat sandy loam soil, ideal for a myriad of agricultural pursuits including grazing and cropping.

Equipped with a reliable water supply courtesy of a bore, this parcel of land ensures a consistent supply to support your farming endeavours year-round. Additionally, the property features a 1920's three-bedroom home, offering a blend of historic character.

For those with equestrian interests, the property comes complete with a well-appointed yard, arena, and a four-box stable complex, providing ample space for the care and training of horses. A four-bay implement shed offers convenient storage for equipment and machinery, while cattle yards cater to livestock management needs.



LAND 29.36 ha

**For Sale**  
Negotiation

### Contact

**Jack Van Lierop**

0274 455 099

Jack.VanLierop@ljhooker.co.nz

**Glen Murray**

027 488 6138

glen.murray@ljhooker.co.nz



**Disclaimer:** All information contained therein is gathered from relevant third parties sources.

We cannot guarantee or give any warranty about the information provided. Interested parties must rely solely on their own enquiries.

**LJ Hooker Matamata**

**07 888 5677**

Link Realty Ltd



Whether you aspire to cultivate crops, raise livestock, or indulge in equestrian pursuits, 590 Wardville Road presents an enticing canvas upon which to realize your dreams. Don't miss the chance to secure your slice of countryside paradise in this sought-after locality.

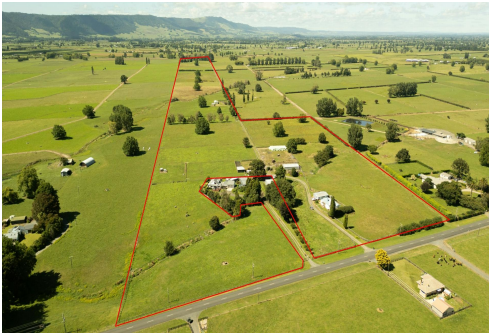
Give Jack or Glen a call anytime to arrange an appointment.

## More About this Property

Property ID	KJKHR1
Property Type	Grazing
Land Area	29.36 ha
Licensed Real Estate Agents (REAA2008)	

**Jack Van Lierop 0274 455 099**  
Principal / Rural | Lifestyle | Commercial Specialist |  
Jack.VanLierop@ljhooker.co.nz  
**Glen Murray 027 488 6138**  
Rural | Lifestyle | Commercial Specialist | glen.murray@ljhooker.co.nz

**LJ Hooker Matamata 07 888 5677**  
Link Realty Ltd  
62 Arawa Street, MATAMATA NZ 3400  
matamata.ljhooker.co.nz | matamata@ljhooker.co.nz



**Disclaimer:** All information contained therein is gathered from relevant third parties sources. We cannot guarantee or give any warranty about the information provided. Interested parties must rely solely on their own enquiries.

**LJ Hooker Matamata**  
**07 888 5677**  
Link Realty Ltd