

10 Scriveners Road, Lichfield

Space, comfort, and opportunity

Set on a generous 4.1ha lifestyle block, this solid Hinuera Stone home offers space, comfort, and flexibility in a generous rural setting. Featuring five bedrooms, two bathrooms and an additional shower, it's perfectly suited to growing families or those wanting room to spread out.

Step outside and you'll find the true appeal of lifestyle living. The 4.1 hectares (more or less) offer endless possibilities - room for children to explore, space for animals, gardens, or simply enjoying the privacy that comes with a larger block. Established grounds provide a welcoming setting while still allowing scope to add your own personal touches

Practical buyers will appreciate the range of shedding options, perfect for storage, hobbies, workshop space, or lifestyle equipment. Whether you're a tradie needing extra room, a lifestyle enthusiast, or simply wanting organised space, the infrastructure here adds real value.

A property that truly delivers on space, comfort, and opportunity and ideal for families wanting room to live, grow, and make lasting memories.

Act quickly to make this lifestyle dream a reality, get in touch today to



LAND 4.11 ha

FOR SALE
Negotiation

AGENTS

Ngaio Putt
027 881 6029
ngaio.putt@ljhooker.co.nz

AGENCY

LJ Hooker Putaruru
(07) 883 8810
Putaruru Real Estate Limited

All information contained therein is gathered from relevant third parties sources.
We cannot guarantee or give any warranty about the information provided.
Interested parties must rely solely on their own enquiries.



view.

MORE DETAILS

Property ID 5B2GFK
Property Type Lifestyle
Land Area 4.1076 ha
Licensed Real Estate Agents (REAA2008)

Ngaio Putt 027 881 6029

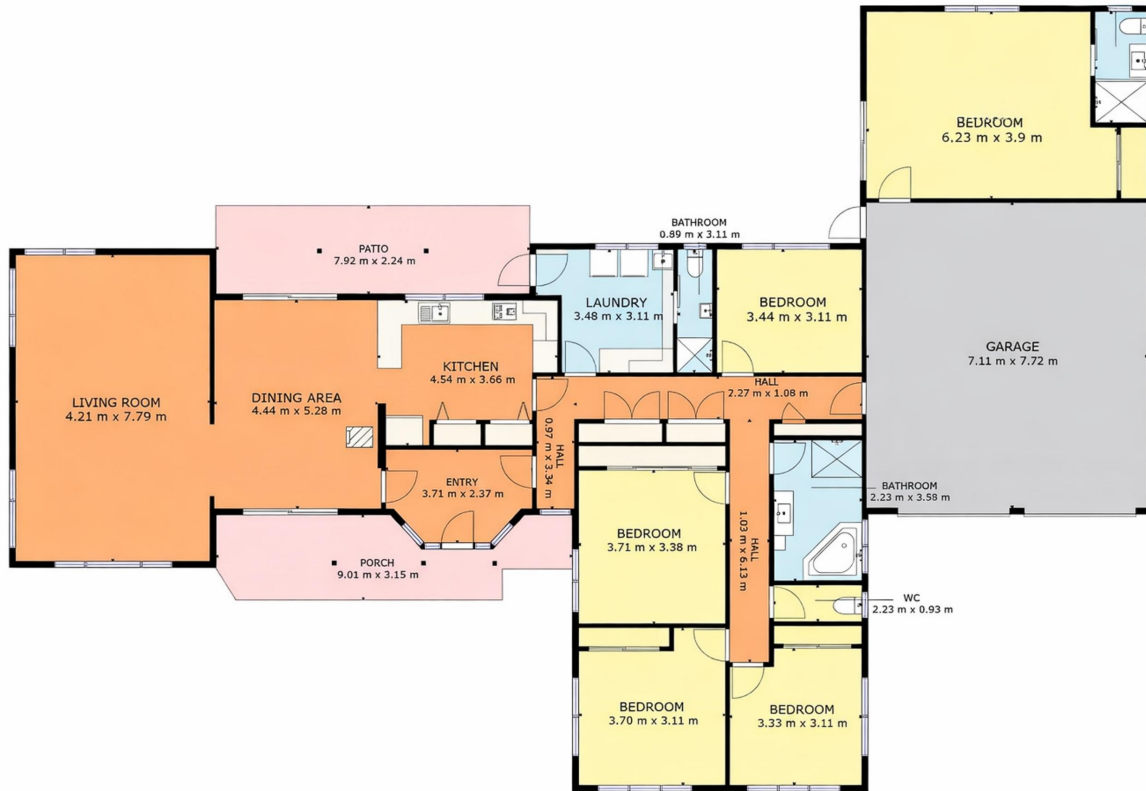
Director/Sales Consultant | ngaio.putt@ljhooker.co.nz

LJ Hooker Putaruru (07) 883 8810

Putaruru Real Estate Limited
23 Princes Street, PUTARURU 3411
putaruru.ljhooker.co.nz | putaruru@ljhooker.co.nz



All information contained therein is gathered from relevant third parties sources.
We cannot guarantee or give any warranty about the information provided.
Interested parties must rely solely on their own enquiries.



GROSS INTERNAL AREA
 EXCLUDED AREAS: PATIO: 18 m², PORCH: 16 m², GARAGE: 55 m²
 TOTAL: 222 m²
SIZES AND DIMENSIONS ARE APPROXIMATE, ACTUAL MAY VARY.



All information contained therein is gathered from relevant third parties sources.
 We cannot guarantee or give any warranty about the information provided.
 Interested parties must rely solely on their own enquiries.

