



## Zuccoli, 20 Myrtlewood Crescent

Quality, affordable living, available now!

Zuccoli is a modern, master planned suburb that includes stunning amenity and convenience including a shopping centre, schools, parks, walking trails and an early learning centre. It is easy to see why more families are choosing Zuccoli as a safe place to bring up their kids. This property is only footsteps from a trove of interconnecting parks and walking trails so you don't need to travel far to enjoy the outdoors.

This home is full of quality finishes including a kitchen with an island bench that includes a breakfast bar and stone bench tops. The layout of the living and dining areas are open plan however the areas are separate making for a good use of space and easy furniture layout. The home is fully airconditioned with solar panels on the roof to reduce running costs and a private inground swimming pool in the rear yard for a refreshing dip when required.

Features include:



**Disclaimer:** All information contained therein is gathered from relevant third parties sources. We cannot guarantee or give any warranty about the information provided. Interested parties must rely solely on their own enquiries.

3

2

2

1

**For Sale**  
\$519,000

**View**  
[ljhooker.com.au/5CEQF2X](http://ljhooker.com.au/5CEQF2X)

**Contact**  
**Jennifer Wardell**  
0447 007 474  
[jwardell@ljhookerdarwin.com.au](mailto:jwardell@ljhookerdarwin.com.au)

**Robert Higgins**  
0418 184 754  
[rhiggins@ljhookerdarwin.com.au](mailto:rhiggins@ljhookerdarwin.com.au)

**LJ Hooker Darwin**  
(08) 8924 0900

- \* Roof top solar panels to reduce running costs
- \* Private inground swimming pool
- \* Quality finishes such as stone bench tops and polished tiles through out
- \* Island bench and breakfast bar in the kitchen
- \* Main bedroom includes ensuite and walk in robe
- \* Secure garage parking for 1 car and off-street parking for another
- \* Well located close to parks and walking trails
- \* Dedicated laundry with loads of storage

This home ticks a lot of boxes, especially in this price range and is certainly worth a look. This property would suite a couple or a couple with young kids looking for a modern home in a great area to buy rather than rent.

Year Built: 2016

Area under title: 300m<sup>2</sup>

Planning Zone: LMR - Low-Medium density residential

Council Rates: \$1,853 per year (approx)

Easements: Nil on title

Status: Ready to move in

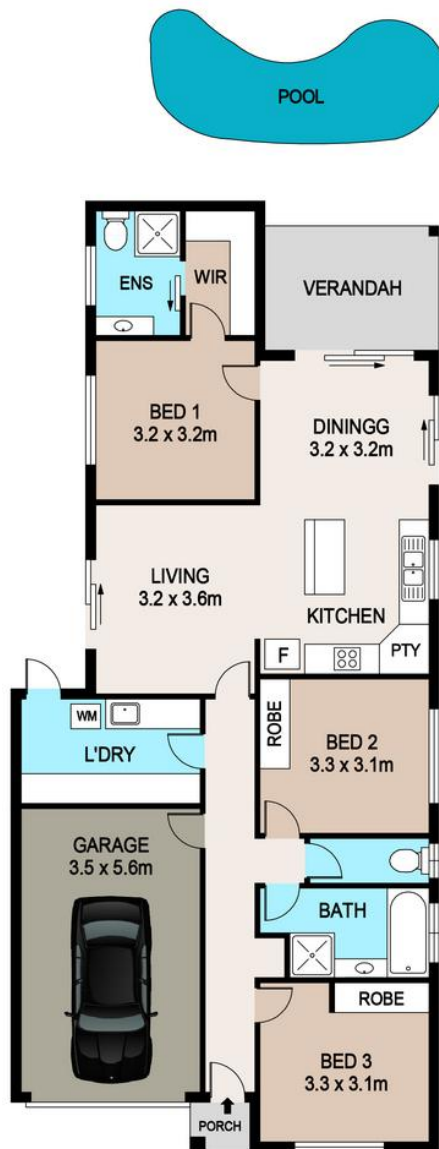
## More About this Property

|               |   |
|---------------|---|
| Property ID   | 5CEQF2X   |
| Property Type | House   |
| House Size    | 140.9 m <sup>2</sup>                                      |
| Land Area     | 300 m <sup>2</sup>  |
| Including     | Air Conditioning<br>Pool<br>Remote Garage<br>Solar Panels |

**Jennifer Wardell 0447 007 474**  
 Sales Representative | [jwardell@ljhookerdarwin.com.au](mailto:jwardell@ljhookerdarwin.com.au)  
**Robert Higgins 0418 184 754**  
 Project Planning and Marketing | [rhiggins@ljhookerdarwin.com.au](mailto:rhiggins@ljhookerdarwin.com.au)

**LJ Hooker Darwin (08) 8924 0900**  
 Shop 1/25 Parap Road, PARAP NT 0820  
[darwin.ljhooker.com.au](http://darwin.ljhooker.com.au) | [reception@ljhookerdarwin.com.au](mailto:reception@ljhookerdarwin.com.au)





## 20 MYRTLEWOOD CR, ZUCCOLI

### DISCLAIMER

PLANS SHOWN ARE FOR MARKETING PURPOSES ONLY. ALL DIMENSIONS ARE APPROXIMATE AND NOT TO SCALE. THEY ARE SUBJECT TO ERRORS AND INACCURACIES AND NO LIABILITY WILL BE ACCEPTED. INTERESTED PARTIES SHOULD MAKE THEIR OWN INQUIRIES.