



Yuleba, 24 Stephenson Street

24 Stephenson Street - Yuleba

Commercial Building with Apartment – Yuleba Main Street Location.

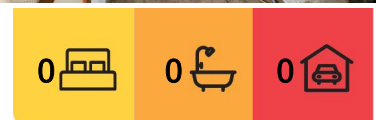
An opportunity to secure a versatile commercial property in Yuleba. Located on the main street, right next to the Yuleba General Store and directly across from the newly developed park and playground, this property offers convenience & onsite living quarters.

- Property Features:
- Commercial building with single shop usage (Previously used as a Butchery)
- 1-bedroom, 1-bathroom apartment at the rear
- Block size: 521sqm
- Building size: Approx. 150sqm (Commercial space: 70sqm, Apartment: 80sqm)
- Two garden sheds for additional storage

Ideal for a small business owner looking to live on-site, Affordable housing or an investor



Disclaimer: All information contained therein is gathered from relevant third parties sources. We cannot guarantee or give any warranty about the information provided. Interested parties must rely solely on their own enquiries.



For Sale
\$45,000 + GST

View
By Appointment

Contact
Andrew Busiko
0427 622 783
ruralsales.roma@ljhooker.com.au

LJ Hooker Roma
(07) 4622 1222

seeking a dual-purpose property.

Price: \$45,000 + GST

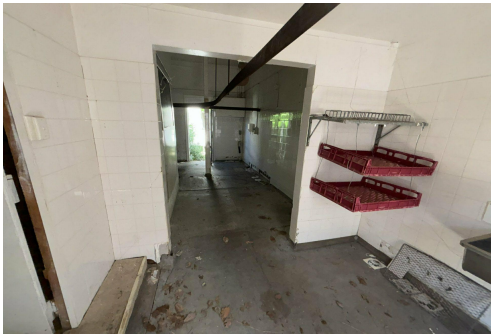
For more details or to arrange an inspection, contact Andrew Busiko at LJ Hooker Roma on 0427 622 783.

More About this Property

Property ID	BUEHG2
Property Type	House
House Size	150 m²
Land Area	521 m²

Andrew Busiko 0427 622 783
Rural Sales Agent | ruralsales.roma@ljhooker.com.au

LJ Hooker Roma (07) 4622 1222
74 McDowall Street, ROMA QLD 4455
roma.ljhooker.com.au | roma@ljhooker.com.au



Disclaimer: All information contained therein is gathered from relevant third parties sources. We cannot guarantee or give any warranty about the information provided. Interested parties must rely solely on their own enquiries.

LJ Hooker Roma
(07) 4622 1222