

Yokine, 31A Constance Street

BRAND NEW HOME!

SNEAK PEAK HOME OPEN! THIS SATURDAY 10:00am - 10:30am

A very rare opportunity to acquire your very own BRAND NEW home within this popular inner northern suburb.

Would you love to live in your own brand new home, but can't find the land and want to skip the time involved in building? ... then this property is for you!

Yokine is a great place to live. Enjoy the many well-maintained reserves and parks, great shopping options, cafes and restaurants, and a tournament quality golf course. You will be just a short walk from the popular Mid Century Café, and will have easy access to public transport straight into the city which is just 6kms away. There is also close proximity to the entertainment precincts of Mt Hawthorn, Mt Lawley, North Perth, and Leederville as well as the employment hub of Osborne Park. The beautiful sunset coast is not too far away and it



For Sale

Price Guide: Offers From \$900,000

View

ljhooker.com.au/3SBUFGJ

Contact

Clint White

0422 960 305

clint.white@ljhooker.com.au

Paul Hickey

0402 449 120

paul.hickey@ljhooker.com.au



LJ Hooker City Residential
(08) 9325 0700

Disclaimer: All information contained therein is gathered from relevant third parties sources.

We cannot guarantee or give any warranty about the information provided. Interested parties must rely solely on their own enquiries.

is a super popular location for families and city-based professionals.

Built by Dale Alcock Homes this is a high-quality home which is beautifully presented and designed with modern living and entertaining in mind. Features include, but are not limited to:

- Spacious master bedroom with generous dual vanity ensuite and walk-in robe
- Both minor bedrooms have built in robes
- Stylish main bathroom, with dual vanity
- Well-appointed central kitchen with ample bench and cupboard space
- Separate scullery with dishwasher recess
- Open plan dining and living which leads out to the alfresco patio under the main roof
- Laundry with direct access to separate drying alcove
- High ceilings throughout
- Double lock up garage with auto door and shoppers entry
- Ducted reverse cycle air-conditioning throughout
- Solar panels
- Low maintenance and easy care landscaping
- Survey Strata Block of 278sqm
- Building Size of 170sqm

This is an outstanding opportunity to secure a beautiful home in a super convenient and sought after location, don't miss out!

Note: Window treatments have been ordered and will be fitted prior to settlement.
Building plans available on request.

More About this Property

Property ID	3SBUFGJ
Property Type	House

Clint White 0422 960 305

Sales Executive | clint.white@ljhooker.com.au

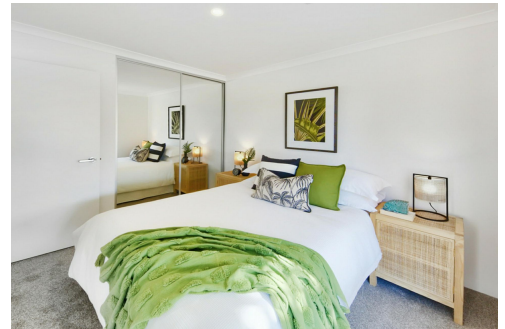
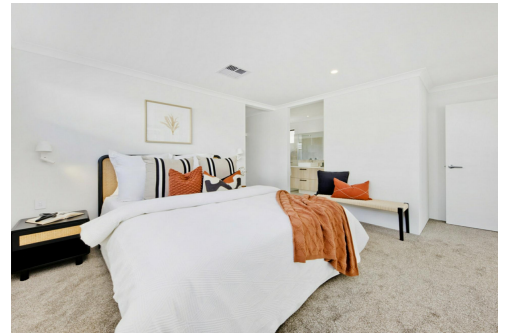
Paul Hickey 0402 449 120

Sales Executive | paul.hickey@ljhooker.com.au

LJ Hooker City Residential (08) 9325 0700

Shop 30, 82 Royal Street, EAST PERTH WA 6004

cityresperth.ljhooker.com.au | hello@ljhpxp.com.au



LJ Hooker City Residential
(08) 9325 0700

Disclaimer: All information contained therein is gathered from relevant third parties sources.
We cannot guarantee or give any warranty about the information provided. Interested parties must rely solely on their own enquiries.

