

Yeronga, 6/29 Eversley Terrace

EVERYTHING YOU WILL EVER NEED IN EVERSLEY TCE

Property Information:

Body Corp Levies: \$842.85/quarter

Sinking Fund Balance: \$42,133.44

Rates: \$411.45/quarter

Owner Purchased Elsewhere & Open To All Offers.

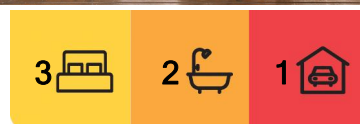
This spacious contemporary townhouse at 6/29 Eversley Terrace is privately positioned at the back of a boutique complex of only 7. Designed with inner-city living in mind, it offers a seamless flow for relaxed indoor-outdoor living while at the same time being close to every convenience imaginable.

Step inside the home to be greeted by the dining room, with space for the sideboard or



Disclaimer: All information contained therein is gathered from relevant third parties sources.

We cannot guarantee or give any warranty about the information provided. Interested parties must rely solely on their own enquiries.



For Sale

OFFERS OVER \$899,000

View

Sat 12th Jul @ 10:30AM - 11:00AM

Contact

Jane Elvin

0408 344 417

j.elvin@ljhookerproperty.com.au

Josephine Elvin

0457 000 897

joey.elvin@ljhookerproperty.com.au

**LJ Hooker Annerley | Yeronga |
Salisbury
(07) 3848 7369**

wine fridge, framed by the feature timber staircase. The lounge room enjoys a built-in TV unit for extra storage, positioned beside the stylish kitchen with stone benchtops, modern appliances, dishwasher, ample storage & bench space. The laundry is located on this level, combined with the powder room.

Flowing through glass sliding doors, the covered outdoor entertainment deck offers the perfect place to entertain and enjoy a BBQ. There is a bonus area under the back deck that the current owners retreat to. The kids will also love this space to enjoy with friends. The private back gardens & courtyard offer a relaxing green space that makes you feel like you are in our own private oasis.

Back inside you will find the three generous bedrooms upstairs, all enjoying ducted air-conditioning, ceiling fans & built-in wardrobes. The main bedroom is oversized with a walk-in robe & ensuite. The main bathroom services the other two bedrooms with a shower over bath. There is a handy study nook at the top of the stairs.

You are so close to every convenience imaginable, walk to Hyde Rd Kindy, St Sebastian's Primary School, Yeronga Village Shops, Club Yeronga, Hyde Rd dog park, cafés, train & buses; a bike ride to the Green Bridge connecting you to the University of Queensland; with easy access to Yeerongpilly Green development, QLD Tennis Centre, hospitals & private schools; and within 5km to the CBD. All the conveniences at your fingertips but quietly located away from the hustle and bustle in the beautiful Yeronga pocket.

Notable features of 6/29 Eversley Terrace Yeronga:

- Located in a boutique complex of only 7
- At the back of the complex offering privacy
- Modern kitchen with good storage, stone benchtop, modern appliances, dishwasher, ample storage & bench space
- Separate lounge & dining
- Large, covered entertainment deck with another area under the deck to chill out
- Lovely back gardens & courtyard
- 3 good-sized bedrooms all with ducted air-conditioning, ceiling fans & built-in wardrobe
- Main bedroom with walk-in robe & en-suite
- Main bathroom with shower over bath
- Powder room & laundry on the lower level
- Remote access garage with internal entry to home
- Walk to St Sebastian's Primary School, Yeronga State Schools, Yeronga Village Shops, parks, Hyde Rd dog park, train, bus & cafés
- Bike ride to the Green Bridge connecting you to the University of QLD
- Easy access to hospitals, universities, QLD Tennis Centre & Private Schools
- Only 5km to the CBD.

Call Jane Elvin or Joey Elvin to discuss this opportunity further.



Disclaimer: All information contained therein is gathered from relevant third parties sources. We cannot guarantee or give any warranty about the information provided. Interested parties must rely solely on their own enquiries.

**LJ Hooker Annerley | Yeronga |
Salisbury
(07) 3848 7369**

More About this Property

Property ID	1ESXH31
Property Type	Townhouse
Including	Ensuite Ducted Cooling Courtyard Deck Dishwasher Built-in-Robes Remote Garage

Jane Elvin 0408 344 417

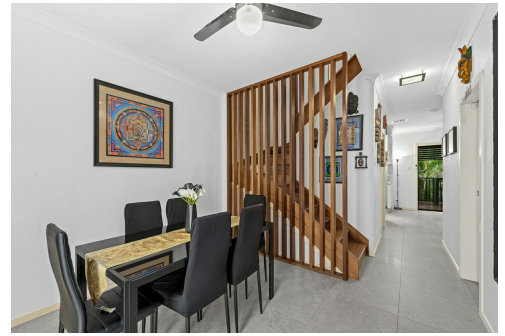
Principal - Sales & Marketing Consultant | j.elvin@ljhookerproperty.com.au

Josephine Elvin 0457 000 897

Property Manager & New Business Manager | Sales Associate to Jane Elvin | joey.elvin@ljhookerproperty.com.au

LJ Hooker Annerley | Yeronga | Salisbury (07) 3848 7369

443 Ipswich Road, ANNERLEY QLD 4103
annerleyyeronga.ljhooker.com.au | admin@ljhookerproperty.com.au



Disclaimer: All information contained therein is gathered from relevant third parties sources. We cannot guarantee or give any warranty about the information provided. Interested parties must rely solely on their own enquiries.

**LJ Hooker Annerley | Yeronga |
Salisbury
(07) 3848 7369**

Jane Elvin Property

6/29 Eversley
Terrace
YERONGA

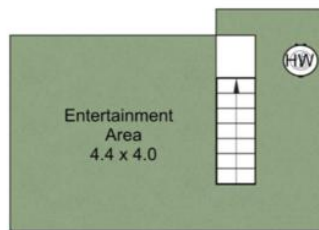
3 Bed
2 Bath
1 Car

Internal : 121m²

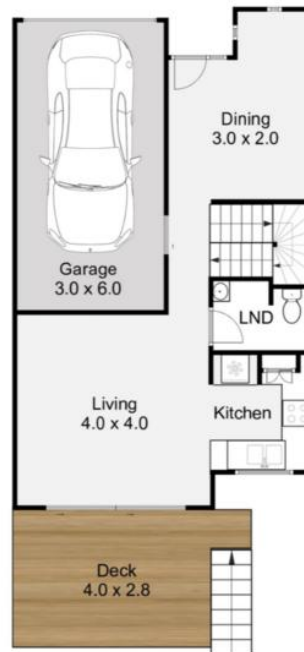
External : 40m²

Total Area : 161m²

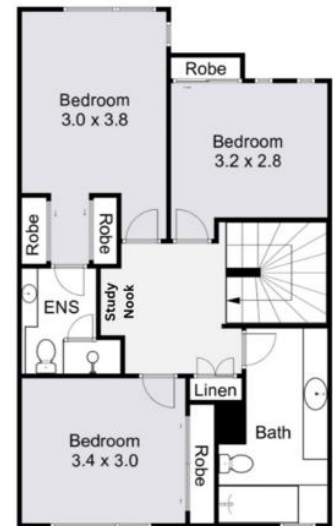
Disclaimer: This floorplan is strictly for illustrative purposes only. All measurements are approximate and buyers should make their own enquiries as to the of the information displayed herein. Floorings, colours, textures and items used are not indicative and are for visual display purposes only. No responsibility will be taken for any errors or omissions. Floorplan created by fastfocus.au



LOWER GROUND FLOOR



GROUND FLOOR



FIRST FLOOR