

25 Summerview Avenue, Yarrabilba

SOLD By Christie Smith!

Big on Space, Zero Body Corp —The Perfect Yarrabilba Opportunity

Don't miss your chance to secure this highly sought-after 4 bedroom, 3 bathroom terrace home complete with a double lock-up garage and no body corporate fees - a rare and valuable offering in today's market.

Boasting a generous 248m² floor plan, this home delivers the perfect balance of space, functionality, and lifestyle. Whether you're a growing family or a savvy investor, the thoughtful layout and prime positioning make this an exceptional opportunity.

Property Highlights of 25 Summerview Avenue include -

Ground Floor:

- Two well-positioned bedrooms (Beds 3 & 4), both with walk-in robes and ceiling fans
- Main bathroom with separate bathtub + additional powder room
- Double remote-controlled lock-up garage
- Internal laundry with storage and direct garage access
- Linen cupboard + under-stair storage
- Spacious grassed courtyard across from Autumnfield community park

All information contained therein is gathered from relevant third parties sources. We cannot guarantee or give any warranty about the information provided. Interested parties must rely solely on their own enquiries.

4 3 2

FOR SALE
Contact Agent

AGENTS

Christie Smith
0419 684 184
csmith@ljhcomplete.com.au

Trudy Weaver
0429 935 125
tweaver@ljhcomplete.com.au

AGENCY

LJ Hooker Property Complete
1300 360 388

LJ Hooker

Upper Level:

- Master suite with air-conditioning, ceiling fan, walk-in robe, and ensuite with double vanity
- Additional bedroom (Bed 2) with built-in robe and ceiling fan
- Family bathroom + separate toilet
- Modern kitchen featuring island bench, gas cooking, dishwasher, and walk-in pantry
- Air-conditioned open plan living and dining area with ceiling fans
- Covered timber balcony overlooking the courtyard
- Additional linen storage in hallway

Current lease in place until 30 November 2026

This property presents a fantastic entry into the market at an attractive price point. Whether you're looking to move into a vibrant community or secure a solid investment, this home is one you'll want at the top of your list.

Yarrabilba is a thriving, master-planned community that perfectly blends relaxed living with modern convenience. Designed with families in mind, the suburb offers an abundance of parks, playgrounds, walking trails, and open green spaces to enjoy year-round. With multiple schools, childcare centres, shopping precincts, cafés, and fitness facilities already established - and even more infrastructure planned for the future - Yarrabilba continues to grow as a highly sought-after destination for both homeowners and investors alike.

Disclaimer:

Property images may have been digitally altered or staged for marketing purposes and may not constitute a complete representation of the property condition being purchased. Any photographs used by LJ Hooker may only show certain aspects of the property at the time the photographs are taken and any prospective buyer should inspect the property.

MORE DETAILS

Property ID	21A9HGS
Property Type	Terrace
House Size	248 m2
Land Area	225 m2
Including	Ensuite Air Conditioning Toilets (3) Courtyard Balcony Dishwasher Outdoor Entertaining Built-in-Robes Secure Parking Remote Garage

Christie Smith 0419 684 184

Principal & Licensee | csmith@ljhcomplete.com.au

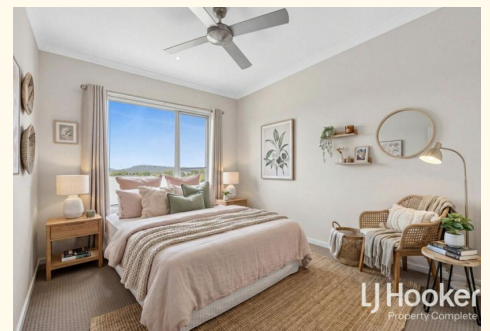
Trudy Weaver 0429 935 125

Sales Consultant | tweaver@ljhcomplete.com.au

LJ Hooker Property Complete 1300 360 388

Level 1, 32 Everglade Street, YARRABILBA QLD 4207

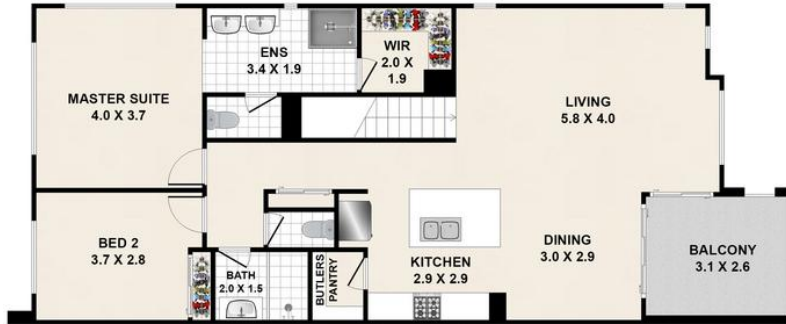
propertycomplete.ljhooker.com.au | admin@ljhcomplete.com.au



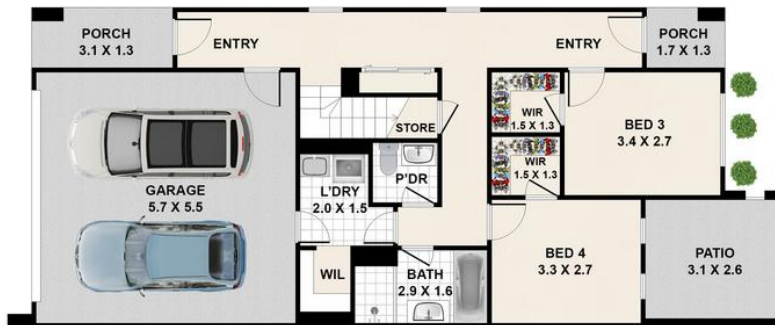
25 Summerview Avenue, Yarrabilba

4 | 3 | 2

Total approx area includes outside covered areas



FIRST FLOOR



GROUND FLOOR

Whilst every attempt has been made to ensure the accuracy of the floorplan shown, all measurements, positioning, fixtures, fittings and any other data shown are an approximate interpretation for illustrative purposes only and are not to scale. No responsibility is taken for any error, omission, miss-statement or use of data shown