



7 Namba Circuit, Yarrabilba

## Luxury Living is Waiting for You - Don't miss out on this Stylish Designer Home!

Don't miss this incredible opportunity to secure a near-new luxury home that is ready for you to move straight in and enjoy. Just two years old and beautifully finished, this stunning property offers complete landscaping and a spacious alfresco area perfect for entertaining and making memories with family and friends. This is a rare opportunity for home owners or investors to act quickly and secure an exceptional one-of-a-kind property.

This stunning family home is perfectly positioned in the new land release of the thriving and highly sought-after suburb of Yarrabilba. Combining modern style with everyday functionality, this home presents the perfect opportunity to secure a luxurious residence and begin enjoying everything it has to offer from day one.

Step inside and immediately appreciate the elegant finishes and contemporary fittings featured throughout. The home showcases high ceilings, ducted air conditioning, large bedrooms, a separate media room and a spacious open-plan layout that seamlessly connects indoor and outdoor living.

All information contained therein is gathered from relevant third parties sources. We cannot guarantee or give any warranty about the information provided. Interested parties must rely solely on their own enquiries.

5  2  2 

**FOR SALE**  
Contact Agent

**VIEW**  
Sun 26th Apr @ 11:45AM - 12:15PM

**AGENTS**  
Christie Smith  
0419 684 184  
csmith@ljhcomplete.com.au

Trudy Weaver  
0429 935 125  
tweaver@ljhcomplete.com.au

**AGENCY**  
LJ Hooker Property Complete  
1300 360 388

 **LJ Hooker**

At the heart of the home is a stunning, expansive kitchen designed to impress. This beautifully appointed space features abundant cabinetry, generous bench space and quality finishes that elevate both style and functionality. The walk-in pantry provides exceptional storage and convenience, making meal preparation effortless. Whether you're cooking for the family or entertaining guests, this thoughtfully designed kitchen creates the perfect central hub for everyday living and memorable gatherings.

Key features of this stunning home include:

- Five spacious bedrooms with built-in mirrored robes or four bedrooms with a Media Room.
- Master retreat features a walk-in robe and elegant ensuite.
- Light-filled open plan living and dining area that effortlessly flows to the outdoor entertaining space.
- Glamorous, spacious kitchen with ample bench space and storage.
- Separate media room or potential fifth bedroom featuring barn door.
- Low-maintenance backyard designed for effortless entertaining, outdoor area with synthetic turf.
- Beautiful extended under cover outdoor area with ample space for BBQ enthusiasts.
- Built-in study nook positioned near the rear bedrooms, ideal for working from home, study or a children's gaming area.

Additional premium inclusions include solar power for improved energy efficiency, ceiling fans throughout and ducted air conditioning for year-round comfort. The home also features striking black tapware and a luxurious back-to-wall freestanding bath, adding a sophisticated touch to the bathrooms.

Perfectly positioned within the vibrant Yarrabilba community, residents enjoy a lifestyle surrounded by parks, playgrounds, walking trails, sporting facilities and local amenities. Located between Brisbane and the Gold Coast and nestled near the natural beauty of Plunkett Conservation Park and Mount Tamborine, Yarrabilba is one of South-East Queensland's fastest growing and most exciting master-planned communities.

This beautifully finished home offers the perfect combination of style, comfort and location - an exceptional lifestyle opportunity not to be missed.

Disclaimer:

Property images may have been digitally altered or staged for marketing purposes and may not constitute a complete representation of the property condition being purchased. Any photographs used by LJ Hooker may only show certain aspects of the property at the time the photographs are taken and any prospective buyer should inspect the property.

## MORE DETAILS

Property ID 215MHGS  
Property Type House  
House Size 269 m2  
Land Area 400 m2  
Including Ensuite  
Study  
Air Conditioning  
Toilets (2)  
Dishwasher  
Outdoor Entertaining  
Built-in-Robes  
Secure Parking  
Fully Fenced  
Remote Garage  
Solar Panels

**Christie Smith 0419 684 184**

Principal & Licensee | [csmith@ljhcomplete.com.au](mailto:csmith@ljhcomplete.com.au)

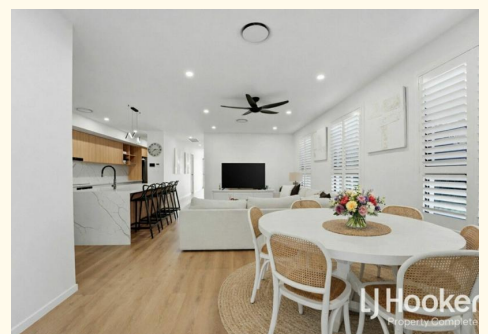
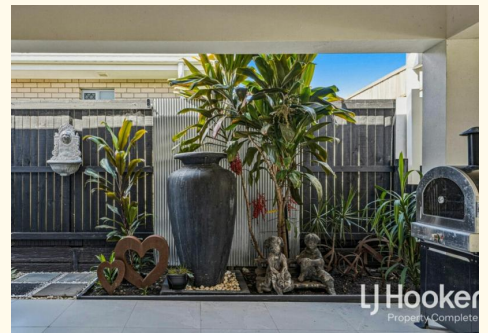
**Trudy Weaver 0429 935 125**

Sales Consultant | [tweaver@ljhcomplete.com.au](mailto:tweaver@ljhcomplete.com.au)

**LJ Hooker Property Complete 1300 360 388**

Level 1, 32 Everglade Street, YARRABILBA QLD 4207

[propertycomplete.ljhooker.com.au](http://propertycomplete.ljhooker.com.au) | [admin@ljhcomplete.com.au](mailto:admin@ljhcomplete.com.au)



All information contained therein is gathered from relevant third parties sources.  
We cannot guarantee or give any warranty about the information provided.  
Interested parties must rely solely on their own enquiries.

7 Namba Circuit, Yarrabilba



5 | 2 | 2 | 269 Sqm | ↑

Total approx area includes outside covered areas



Whilst every attempt has been made to ensure the accuracy of the floorplan shown, all measurements, positioning, fixtures, fittings and any other data shown are an approximate interpretation for illustrative purposes only and are not to scale. No responsibility is taken for any error, omission, miss-statement or use of data shown

All information contained therein is gathered from relevant third parties sources. We cannot guarantee or give any warranty about the information provided. Interested parties must rely solely on their own enquiries.

