

50 Skyblue Circuit, Yarrabilba


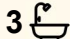
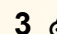
## Immediate Move-In Opportunity - No Body Corporate

This fantastic Terrace Home has No Body Corp and is tucked away in a peaceful pocket of Yarrabilba. Built by Plantation Homes this property offers the perfect balance of space, style, and serenity. This home has solar panels, a large gourmet kitchen with a brand New 900mm freestanding gas cooker, a balcony and private courtyard. You won't want to miss out on this opportunity, whether you are looking for your first home or investment.

Positioned in a quiet, family-friendly street, this impressive four-bedroom home has been thoughtfully designed to accommodate large or growing families who value space, comfort and separation. Wake up to tranquil views and unwind overlooking a beautiful nature walk right at your doorstep. Whether you're entertaining guests on the spacious deck or enjoying quiet family time, this home delivers comfort and versatility in every corner.

### Key Features:

- Ready for Move In
- Four Generous bedrooms
- Beautiful Master Suite with Ensuite & Walk in Robe
- Three Modern bathrooms

4  3  3 

### FOR SALE

Please Call

### AGENTS

Christie Smith  
0419 684 184  
csmith@ljhcomplete.com.au

Xander Barnard  
0417 402 682  
xbarnard@ljhcomplete.com.au

### AGENCY

LJ Hooker Property Complete  
1300 360 388

All information contained therein is gathered from relevant third parties sources. We cannot guarantee or give any warranty about the information provided. Interested parties must rely solely on their own enquiries.



- Scenic outlook from Balcony with no compromise on privacy
- Solar Panels to help with cost of living
- Spacious layout designed for modern living
- Open Kitchen with walk in pantry
- Brand New Free Standing Gas Cooktop
- 2x Split System A/C
- Low maintenance yard
- Ceilings Fans Throughout

This is more than just a home, it's a lifestyle opportunity in one of Yarrabilba's most peaceful settings. Featuring two bedrooms and two bathrooms upstairs, plus two bedrooms and a bathroom downstairs, this clever layout provides the perfect balance of space and privacy for growing families.

Its strategic location between Brisbane and the Gold Coast makes it appealing for commuters, while modern housing and strong rental demand make it equally attractive to investors seeking long-term growth and reliable returns.

Enjoy the outdoors with an abundance of parks, playgrounds and walking trails just moments away, perfect for weekend adventures or relaxed afternoon strolls. The area is also well-connected, offering easy access to Mount Tamborine & Mountain Ranges for the weekend getaways

**Disclaimer:**

Property images may have been digitally altered or staged for marketing purposes and may not constitute a complete representation of the property condition being purchased. Any photographs used by LJ Hooker may only show certain aspects of the property at the time the photographs are taken and any prospective buyer should inspect the property.

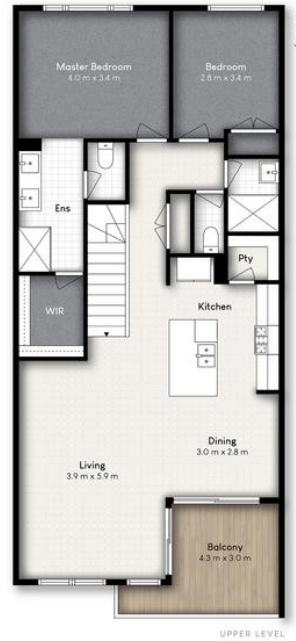
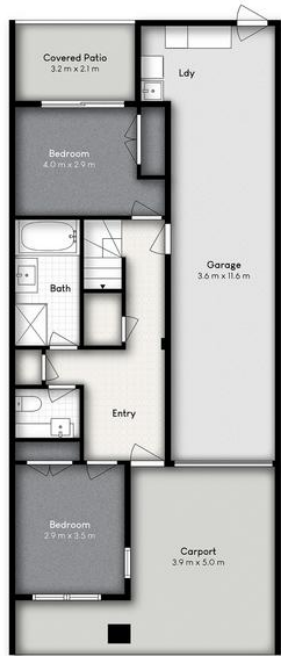
**MORE DETAILS**

Property ID	219RHGS
Property Type	House
House Size	235 m2
Land Area	188 m2
Including	Ensuite
	Air Conditioning
	Toilets (3)
	Courtyard
	Balcony
	Deck
	Dishwasher
	Outdoor Entertaining
	Built-in-Robes
	Remote Garage

**Christie Smith 0419 684 184**  
 Principal & Licensee | [csmith@ljhcomplete.com.au](mailto:csmith@ljhcomplete.com.au)  
**Xander Barnard 0417 402 682**  
 Sales Associate | [xbarnard@ljhcomplete.com.au](mailto:xbarnard@ljhcomplete.com.au)

**LJ Hooker Property Complete 1300 360 388**  
 Level 1, 32 Everglade Street, YARRABILBA QLD 4207  
[propertycomplete.ljhooker.com.au](http://propertycomplete.ljhooker.com.au) | [admin@ljhcomplete.com.au](mailto:admin@ljhcomplete.com.au)





50 SKYBLUE CIRCUIT, YARRABILBA

 4  3  2

Internal: 198m<sup>2</sup> | External: 37m<sup>2</sup> | Total: 235m<sup>2</sup>

Whilst every attempt has been made to ensure the accuracy of the floor plan contained here, measurements of doors, windows, rooms and any other item are approximate and no responsibility is taken for any error, omission, or misstatement. This plan is for illustrative purposes only and should only be used as such by any prospective purchaser.

