



29 Darrau Avenue, Yarrabilba

## **SOLD** By Christie Smith!

Move-In Ready Gem - Lovingly Maintained & Investor Friendly


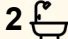

Don't miss this immaculate, low-maintenance home in the thriving suburb of Yarrabilba. Built by Invision Homes in 2017, this property has been lovingly owner-occupied since new and presents in as-new condition, ready for its next owner to enjoy.

The home features three well-positioned bedrooms, all with built-in robes, while the master suite boasts a walk-in robe and private ensuite for added comfort and convenience.

You'll appreciate the separate lounge room, providing extra living space for relaxation or entertaining. Additional highlights include solar power and beautifully maintained gardens, completing this move-in-ready package.

### Key Features:

- 3 bedrooms all with built in robes and ceiling fans
- Master bedroom with ensuite and walk in robe
- Separate lounge room for extra space, kids retreat or work from home area
- Kitchen with gas cooktop, step in pantry and dishwasher
- Security screens throughout

3  2  1 

**FOR SALE**  
Contact Agent

### **AGENTS**

Christie Smith  
0419 684 184  
csmith@ljhcomplete.com.au

Trudy Weaver  
0429 935 125  
tweaver@ljhcomplete.com.au

### **AGENCY**

LJ Hooker Property Complete  
1300 360 388

All information contained therein is gathered from relevant third parties sources.  
We cannot guarantee or give any warranty about the information provided.  
Interested parties must rely solely on their own enquiries.

 **LJ Hooker**

- Immaculately maintained and move in ready
- 16 solar panels
- Lock up garage with laundry, internal and external access

A fantastic opportunity in a growing community - this one won't last long!

Yarrabilba offers the perfect balance of suburban convenience and natural beauty, surrounded by scenic parklands and peaceful rural landscapes. This thoughtfully designed, family-oriented community is ideally located between Brisbane's CBD and the Gold Coast, with picturesque Mount Tamborine just moments away.

Home to more than 15,000 residents, Yarrabilba is a thriving and connected neighbourhood where modern living meets community spirit. Residents enjoy easy access to a growing range of amenities, including schools, shopping centres, playgrounds, and sporting facilities. The area currently boasts five established schools, five early learning centres, a variety of local sporting clubs, and over 120 kilometres of walking and cycling paths weaving through lush green spaces.

With its modern homes, vibrant lifestyle, and strong sense of community, Yarrabilba is more than just a place to live-it's a place to belong. Whether you're purchasing your first home, upgrading for your family, or looking for a smart investment, Yarrabilba represents one of South-East Queensland's most exciting and sought-after destinations.

**Disclaimer:**

Property images may have been digitally altered or staged for marketing purposes and may not constitute a complete representation of the property condition being purchased. Any photographs used by LJ Hooker may only show certain aspects of the property at the time the photographs are taken and any prospective buyer should inspect the property.

**MORE DETAILS**

Property ID	215JHGS
Property Type	House
House Size	153 m2
Land Area	290 m2
Including	Ensuite Toilets (2) Dishwasher Built-in-Robes Fully Fenced Remote Garage

**Christie Smith 0419 684 184**

Principal & Licensee | [csmith@ljhcomplete.com.au](mailto:csmith@ljhcomplete.com.au)

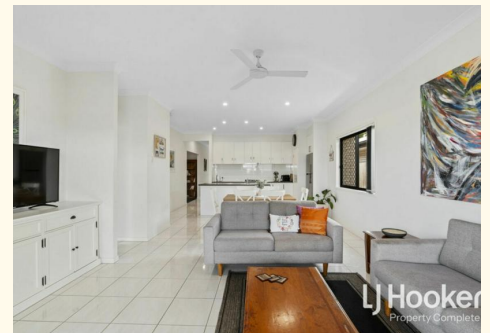
**Trudy Weaver 0429 935 125**

Sales Consultant | [tweaver@ljhcomplete.com.au](mailto:tweaver@ljhcomplete.com.au)

**LJ Hooker Property Complete 1300 360 388**

Level 1, 32 Everglade Street, YARRABILBA QLD 4207

[propertycomplete.ljhooker.com.au](http://propertycomplete.ljhooker.com.au) | [admin@ljhcomplete.com.au](mailto:admin@ljhcomplete.com.au)



## 29 Darrau Avenue, Yarrabilba



This floor plan including furniture, fixture measurements and dimensions are approximate and for illustrative purposes only. All enquiries must be directed to the agent, vendor or party representing this floor plan.

 **LJ Hooker**