

26 Sandell Street, Yarrabilba

## SOLD By Christie Smith!

Contemporary Terrace Living - No Body Corporate

Welcome to 26 Sandell Street, a stunning Plantation-built terrace home that redefines modern living. Crafted with exceptional quality and meticulous attention to detail, this residence offers the perfect balance of style, functionality, and privacy.

Featuring fire-rated safety walls for enhanced soundproofing, the home provides a peaceful, secure living environment rarely found in terrace homes. Whether you're an owner-occupier or investor, this is a smart, low-maintenance property that delivers on every level.

Current Lease Expires: 26/05/2026

Designed with three generously sized bedrooms upstairs, two beautifully appointed bathrooms, an additional powder room downstairs, and parking for up to four vehicles, this home effortlessly caters to growing families or those who love to entertain - all without the added cost of body corporate fees.

The heart of the home is the designer kitchen, complete with 900mm gas cooking appliances, large stone benchtops, and dishwasher. The light-filled open-plan living and dining area seamlessly flow to the

3 2 2

**FOR SALE**  
Contact Agent

### AGENTS

Christie Smith  
0419 684 184  
csmith@ljhcomplete.com.au

Trudy Weaver  
0429 935 125  
tweaver@ljhcomplete.com.au

### AGENCY

LJ Hooker Property Complete  
1300 360 388

All information contained therein is gathered from relevant third parties sources.  
We cannot guarantee or give any warranty about the information provided.  
Interested parties must rely solely on their own enquiries.

LJ Hooker

private outdoor entertainment area and manicured courtyard.

High-quality finishes are showcased throughout, complemented by high ceilings and ducted air conditioning. The spacious master suite is a true highlight, featuring an elegant ensuite with dual vanities and a large scale walk-in robe.

Step outside to the fully fenced and manicured courtyard with undercover patio and entertainment extension, a low maintenance and private space for the children and/or pets. Additional highlights include internal access from the garage, plumbed water for your fridge, and ample storage.

**Property Highlights:**

- 3 spacious bedrooms with built-in or walk-in robes and ceiling fans
- 2 stylish bathrooms upstairs including an ensuite with dual vanities and powder room downstairs for convenience
- Ducted air-conditioning through out
- Double lock-up garage + additional space to park a further 2 cars in your driveway
- Designer kitchen with freestanding 900mm gas cooking and dishwasher
- Open-plan living & dining
- Separate internal laundry
- Fully fenced & secure low-maintenance courtyard
- No Body Corporate Fees!

You'll love being just a short walk from Coles, the Yarrabilba Hotel, and a range of local amenities, with Darlington Park located at the end of the street - perfect for the kids to enjoy on weekends.

Yarrabilba offers the perfect blend of suburban living, rural retreats, and natural parklands. This family-friendly, community-minded master-planned development is ideally positioned between Brisbane's CBD and the Gold Coast, with the stunning Mt Tamborine right on your doorstep.

**Disclaimer:**

Property images may have been digitally altered or staged for marketing purposes and may not constitute a complete representation of the property condition being purchased. Any photographs used by LJ Hooker may only show certain aspects of the property at the time the photographs are taken and any prospective buyer should inspect the property.

## MORE DETAILS

Property ID 2114HGS  
Property Type House  
House Size 189 m2  
Land Area 209 m2  
Including Ensuite  
Ducted Cooling  
Ducted Heating  
Toilets (3)  
Deck  
Dishwasher  
Outdoor Entertaining  
Built-in-Robes  
Secure Parking  
Remote Garage

**Christie Smith 0419 684 184**

Principal & Licensee | [csmith@ljhcomplete.com.au](mailto:csmith@ljhcomplete.com.au)

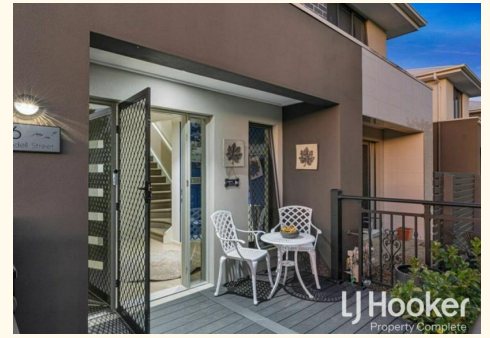
**Trudy Weaver 0429 935 125**

Sales Consultant | [tweaver@ljhcomplete.com.au](mailto:tweaver@ljhcomplete.com.au)

**LJ Hooker Property Complete 1300 360 388**

Level 1, 32 Everglade Street, YARRABILBA QLD 4207

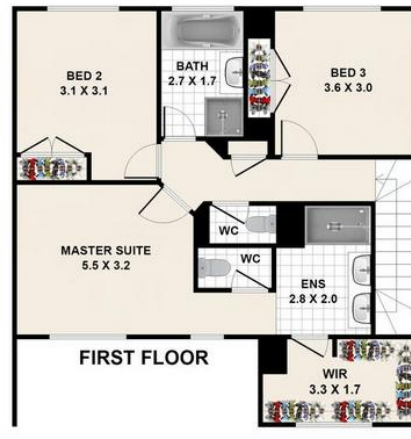
[propertycomplete.ljhooker.com.au](http://propertycomplete.ljhooker.com.au) | [admin@ljhcomplete.com.au](mailto:admin@ljhcomplete.com.au)



All information contained therein is gathered from relevant third parties sources.  
We cannot guarantee or give any warranty about the information provided.  
Interested parties must rely solely on their own enquiries.



**Approx Sqm**  
 Inside Areas - 158.4 Sqm  
 Outside Areas - 31.3 Sqm  
 The Total Areas - 189.7 Sqm



## 26 Sandell Street, Yarrabilba

Whilst every attempt has been made to ensure the accuracy of the floorplan shown, all measurements, positioning, fixtures, fittings and any other data shown are an approximate interpretation for illustrative purposes only and are not to scale. No responsibility is taken for any error, omission, miss-statement or use of data shown.