

2 Haydens Street, Yarrabilba

SOLD By Christie Smith

Experience the ultimate in modern living with this stunning brand-new home, situated on an elevated lot in the picturesque Malee Pocket land release in Yarrabilba.

This meticulously designed residence offers five spacious bedrooms and three luxurious bathrooms, ensuring ample space for both relaxation and entertaining. The sleek and contemporary interiors are complemented by high-end finishes, creating a sophisticated atmosphere that is perfect for couples and families looking for a quality build.

Nestled in a prime location, this property provides easy access to the best that Yarrabilba has to offer. Enjoy the convenience of being close to a range of shops and highly regarded schools, making daily life seamless and enjoyable. With beautiful mountain views as a backdrop, your mornings will be filled with tranquility as you sip your coffee on the private balcony or deck.

Property inclusions:

- 2025 Build - Brand New Home
- 490m² Land Size
- 307m² Floor plan
- 5 Large Bedrooms with built in robes

All information contained therein is gathered from relevant third parties sources. We cannot guarantee or give any warranty about the information provided. Interested parties must rely solely on their own enquiries.

5 3 2

FOR SALE

Offers Over \$1,100,000

AGENTS

Christie Smith
0419 684 184
csmith@ljhcomplete.com.au

Trudy Weaver
0429 935 125
tweaver@ljhcomplete.com.au

AGENCY

LJ Hooker Property Complete
1300 360 388

LJ Hooker

- Master bedroom with walk in robe and ensuite
- Guest bedroom with built in robe and ensuite
- Beautifully appointed main bathroom
- 4 x cameras with internal monitor screen and WIFI to phone once Opticomm connected
- Plumbing installed for fridge connection
- 14kw Ducted A/C with Myair controller
- Stunning Kitchen with soft close to doors and drawers in kitchen and pantry
- LED lights under kitchen & pantry overhead cupboards
- Bed 4 has TV & Data for use as MPR
- Study nook with shelves
- Rain head in Bed 1 ensuite with separate handle
- Gas connection point for outdoor BBQ

Don't miss this opportunity to secure a home that perfectly balances style and functionality. With its enviable location, spacious layout, and premium features, this residence is sure to attract interest quickly. Act now to make this exceptional property yours and start living the lifestyle you've always dreamed of!

Yarrabilba is the perfect combination of suburban living surrounded by rural retreats and natural parklands. This family friendly and community minded master planned development is Ideally positioned between Brisbane's CBD and the Gold Coast, and on the doorstep to stunning Mt Tamborine.

Discover the vibrant lifestyle of Yarrabilba —a thriving, family-friendly community with over 15,000 residents already calling it home. Offering easy access to schools, parks, shopping, and a growing range of local amenities, Yarrabilba perfectly balances convenience and comfort. The community currently features five schools with more planned, five early learning centres, active sporting teams, and 120 km of walking and cycling tracks. Enjoy modern homes, abundant green spaces, and a strong sense of community in a welcoming, connected neighbourhood. Whether you're buying your first home, upgrading, or investing, Yarrabilba presents an exceptional opportunity to secure a home in one of South-East Queensland's most sought-after locations.

Disclaimer:

Property images may have been digitally altered or staged for marketing purposes and may not constitute a complete representation of the property condition being purchased. Any photographs used by LJ Hooker may only show certain aspects of the property at the time the photographs are taken and any prospective buyer should inspect the property.

MORE DETAILS

Property ID	20NQHGS
Property Type	House
House Size	307 m2
Land Area	490 m2
Including	Air Conditioning
	Ducted Cooling
	Ducted Heating
	Toilets (3)
	Balcony
	Deck
	Dishwasher
	Built-in-Robes
	Remote Garage

Christie Smith 0419 684 184

Principal & Licensee | csmith@ljhcomplete.com.au

Trudy Weaver 0429 935 125

Sales Consultant | tweaver@ljhcomplete.com.au

LJ Hooker Property Complete 1300 360 388

Level 1, 32 Everglade Street, YARRABILBA QLD 4207

propertycomplete.ljhooker.com.au | admin@ljhcomplete.com.au

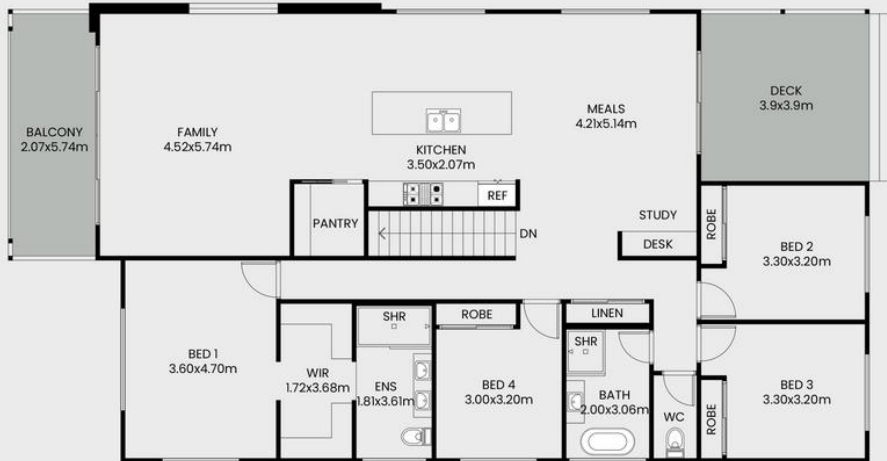


2 Haydens Street, Yarrabilba

This floor plan including furniture, fixture measurements and dimensions are approximate and for illustrative purposes only. BoxBrownie.com gives no guarantee, warranty or representation as to the accuracy and layout. All enquiries must be directed to the agent, vendor or party representing this floor plan.



GROUND FLOOR



UPPER FLOOR

