



14 Breccia Street, Yarrabilba

Spacious Family Home Designed for Comfortable Living

Designed with family living in mind, this spacious 4-bedroom, 2-bathroom home combines modern comfort with practical functionality to suit every stage of family life. The master bedroom is positioned at the front of the home, complete with a walk-through robe, private ensuite, air-conditioning, and ceiling fan whilst the remaining bedrooms are located at the opposite end, creating a perfect family-friendly division with built-in robes and ceiling fans throughout.

The heart of the home features a light-filled, airconditioned open-plan living, dining, and kitchen area with easy-care tiled flooring. The kitchen is well-appointed with a gas cooktop, island bench, and walk-in pantry - ideal for everyday living and entertaining.

Enjoy seamless indoor-outdoor flow to the covered alfresco area, providing the perfect setting for family gatherings and weekend BBQs. Additional features include a separate living area, a double lock-up garage, an internal laundry with direct backyard access, and fly security screens fitted throughout for added peace of mind.

Offering a functional floorplan, modern finishes, and a great balance of indoor and outdoor living, this property represents an outstanding

4  2  2 

FOR SALE
Contact Agent

AGENTS

Christie Smith
0419 684 184
csmith@ljhcomplete.com.au

Trudy Weaver
0429 935 125
tweaver@ljhcomplete.com.au

AGENCY

LJ Hooker Property Complete
1300 360 388

All information contained therein is gathered from relevant third parties sources. We cannot guarantee or give any warranty about the information provided. Interested parties must rely solely on their own enquiries.



opportunity for families, first-home buyers, or investors seeking a move-in-ready home in a family-friendly community.

Currently leased until March 2026.

Yarrabilba offers the perfect balance of suburban convenience and natural beauty, surrounded by scenic parklands and peaceful rural landscapes. This thoughtfully designed, family-oriented community is ideally located between Brisbane's CBD and the Gold Coast, with picturesque Mount Tamborine just moments away.

Home to more than 15,000 residents, Yarrabilba is a thriving and connected neighbourhood where modern living meets community spirit. Residents enjoy easy access to a growing range of amenities, including schools, shopping centres, playgrounds, and sporting facilities. The area currently boasts five established schools, five early learning centres, a variety of local sporting clubs, and over 120 kilometres of walking and cycling paths weaving through lush green spaces.

With its modern homes, vibrant lifestyle, and strong sense of community, Yarrabilba is more than just a place to live-it's a place to belong. Whether you're purchasing your first home, upgrading for your family, or looking for a smart investment, Yarrabilba represents one of South-East Queensland's most exciting and sought-after destinations.

Disclaimer:

Property images may have been digitally altered or staged for marketing purposes and may not constitute a complete representation of the property condition being purchased. Any photographs used by LJ Hooker may only show certain aspects of the property at the time the photographs are taken and any prospective buyer should inspect the property.

MORE DETAILS

Property ID	20GTHGS
Property Type	House
House Size	204 m ²
Land Area	448 m ²
Including	Ensuite
	Air Conditioning
	Toilets (2)
	Dishwasher
	Outdoor Entertaining
	Built-in-Robes
	Secure Parking
	Fully Fenced
	Remote Garage

Christie Smith 0419 684 184

Principal & Licensee | csmith@ljhcomplete.com.au

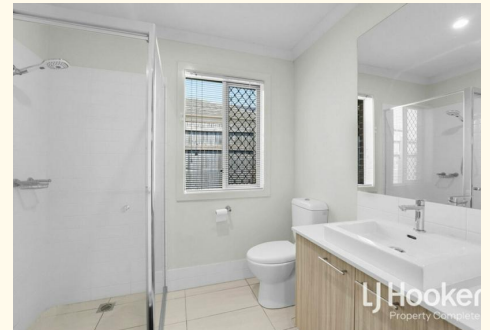
Trudy Weaver 0429 935 125

Sales Consultant | tweaver@ljhcomplete.com.au

LJ Hooker Property Complete 1300 360 388

Level 1, 32 Everglade Street, YARRABILBA QLD 4207

propertycomplete.ljhooker.com.au | admin@ljhcomplete.com.au

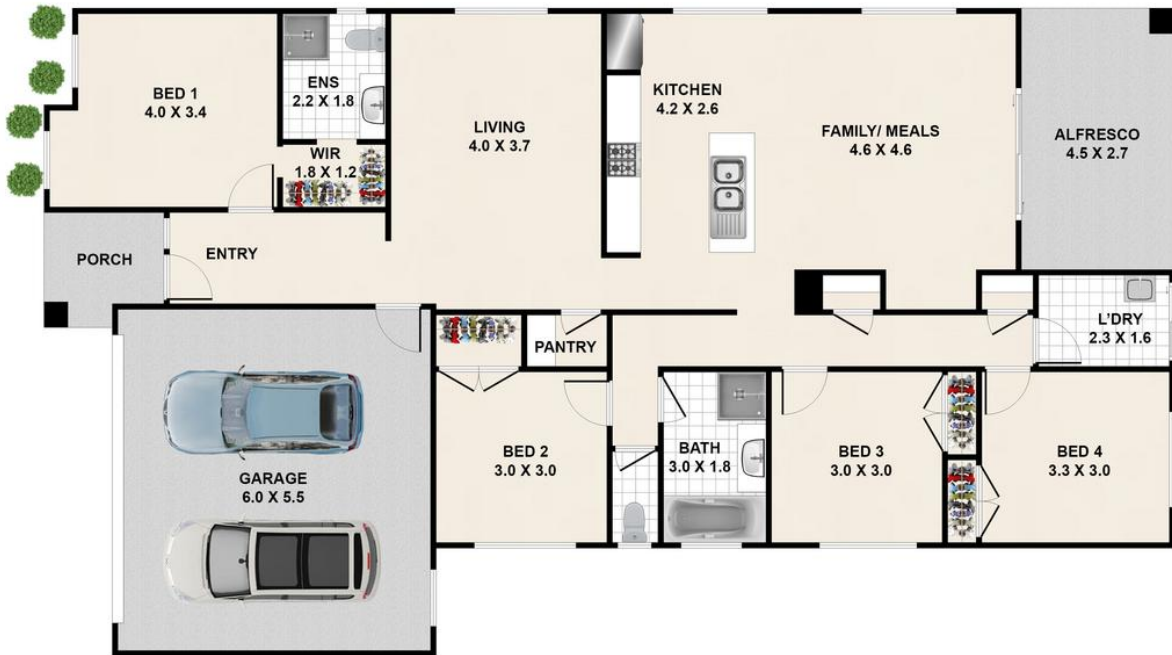


14 Breccia Street, Yarrabilba



4 | 2 | 2 | 188 Sqm | 🏠 | 📍

Total approx area includes outside covered areas



Whilst every attempt has been made to ensure the accuracy of the floorplan shown, all measurements, positioning, fixtures, fittings and any other data shown are an approximate interpretation for illustrative purposes only and are not to scale. No responsibility is taken for any error, omission, miss-statement or use of data shown

All information contained therein is gathered from relevant third parties sources. We cannot guarantee or give any warranty about the information provided. Interested parties must rely solely on their own enquiries.

