



10 Breccia Street, Yarrabilba

Big on Space, Storage & Lifestyle —With Solar, Side Access and Shed

Positioned on a 576m² block, 10 Breccia Street, Yarrabilba is a 2017-built family home that combines size, style, and practicality. Spanning 217m² of living, it offers multiple living spaces, thoughtful inclusions, and plenty of room for the whole family to enjoy.

Key Features:

- 4 bedrooms, all with built-in robes and ceiling fans
- Master suite with walk-in robe, ensuite with dual vanity, and air-conditioning
- Main bathroom with separate bath plus additional powder room
- Three separate living areas providing space for the whole family
- Modern kitchen with 900mm freestanding gas cooktop, electric oven, dishwasher & walk-in pantry
- Natural gas connection to the home
- 3 split-system air conditioners plus solar panels for year-round comfort and efficiency
- Practical additions including hallway cabinetry, separate laundry, and ample storage
- Side access plus powered shed, perfect for tools or hobbies

4 2 4

FOR SALE
Contact Agent

AGENTS

Christie Smith
0419 684 184
csmith@ljhcomplete.com.au

Trudy Weaver
0429 935 125
tweaver@ljhcomplete.com.au

AGENCY

LJ Hooker Property Complete
1300 360 388

All information contained therein is gathered from relevant third parties sources.
We cannot guarantee or give any warranty about the information provided.
Interested parties must rely solely on their own enquiries.

LJ Hooker

- Double lock-up garage with security screens fitted throughout the home

With a rental appraisal of \$800 per week, this home presents an excellent opportunity for growing families or savvy investors looking for strong returns in one of Yarrabilba's fastest-growing communities.

Yarrabilba is the perfect blend of suburban convenience and natural surroundings, framed by rural retreats and beautiful parklands. Ideally located between Brisbane's CBD and the Gold Coast, and just a short drive to Mt Tamborine, this master-planned community is designed for modern family living.

Home to more than 14,000 residents, Yarrabilba offers everything you need within easy reach —from major shopping and specialty stores to cafés, restaurants, schools, childcare centres, and essential services. Families can enjoy a wide range of sporting clubs, medical and fitness facilities, and over 120km of walking and cycling tracks.

This vibrant community also hosts regular events including the Yarrabilba Park Run, annual Halloween celebrations, Christmas Carols in the Parklands, and the ever-popular monthly Mingle Markets. With parks, playgrounds, water play areas, dog parks, and conservation reserves all woven into the neighbourhood, Yarrabilba is a thriving destination where lifestyle, convenience, and community come together —a place to live, grow, and belong.

Disclaimer:

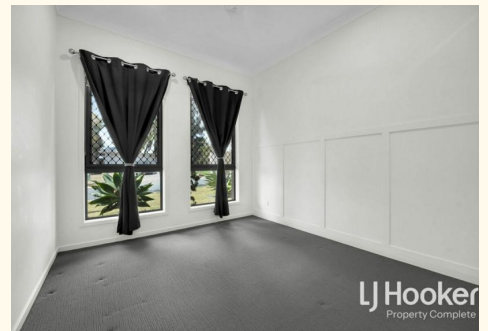
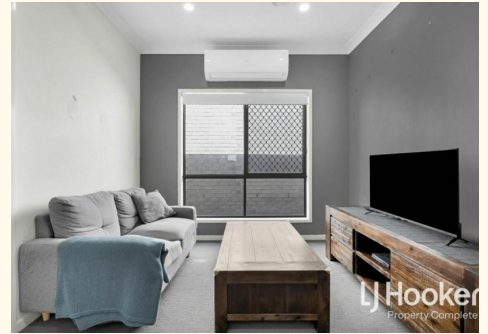
Property images may have been digitally altered or staged for marketing purposes and may not constitute a complete representation of the property condition being purchased. Any photographs used by LJ Hooker may only show certain aspects of the property at the time the photographs are taken and any prospective buyer should inspect the property.

MORE DETAILS

Property ID	20C6HGS
Property Type	House
House Size	217 m2
Land Area	576 m2
Including	<ul style="list-style-type: none"> Ensuite Air Conditioning Toilets (2) Dishwasher Outdoor Entertaining Workshop Built-in-Robes Secure Parking Fully Fenced Remote Garage Solar Panels

Christie Smith 0419 684 184
 Principal & Licensee | csmith@ljhcomplete.com.au
Trudy Weaver 0429 935 125
 Sales Consultant | tweaver@ljhcomplete.com.au

LJ Hooker Property Complete 1300 360 388
 Level 1, 32 Everglade Street, YARRABILBA QLD 4207
propertycomplete.ljhooker.com.au | admin@ljhcomplete.com.au



10 Breccia Street, Yarrabilba

This floor plan including furniture, fixture measurements and dimensions are approximate and for illustrative purposes only. LJ Hooker gives no guarantee, warranty or representation as to the accuracy and layout. All enquiries must be directed to the agent, vendor or party representing this floor plan.

