



1 Neumann Drive, Yarrabilba

Fantastic Family Living on a Prime Corner Block —Act Fast!

Positioned on a generous 425m² fully fenced corner block, this modern home built in 2020 presents an outstanding opportunity for investors or future owner-occupiers alike. Currently tenanted and delivering immediate returns, it's ready for its next owner to secure a quality asset in the growing Yarrabilba community.

The home offers four well-appointed bedrooms, each complete with built-in robes and ceiling fans. The master suite is thoughtfully designed with a walk-in robe, private ensuite, and air conditioning for year-round comfort.

At the heart of the home is a practical and stylish kitchen featuring an island bench, electric cooking, and a dishwasher - perfectly suited for everyday living and entertaining. This flows seamlessly into the open plan, air-conditioned living and dining area, creating a light-filled and functional space for the whole family. Additional features include security screens throughout, a double lock-up garage with laundry, and low-maintenance backyard ideal for busy lifestyles.

Property Features:

- 4 Bedrooms with built in robes and ceiling fans

4 2 2

FOR SALE

Please Call

AGENTS

Christie Smith
0419 684 184
csmith@ljhcomplete.com.au

Trudy Weaver
0429 935 125
tweaver@ljhcomplete.com.au

AGENCY

LJ Hooker Property Complete
1300 360 388

All information contained therein is gathered from relevant third parties sources. We cannot guarantee or give any warranty about the information provided. Interested parties must rely solely on their own enquiries.



- Master bedroom with walk in robe and ensuite
- 2 bathrooms, main bathroom with separate bath
- Modern kitchen with stainless steel appliances
- Open Plan airconditioned living and dining area
- Security Screens throughout
- Double lock up garage with laundry
- Fully fenced backyard

Yarrabilba is a thriving master-planned community offering a relaxed lifestyle with modern convenience. Designed with families in mind, the suburb features an abundance of parks, playgrounds, walking trails, and open green spaces. With multiple schools, childcare centres, shopping precincts, cafés, and fitness facilities already established - and more infrastructure planned. Yarrabilba continues to grow as a highly desirable place to live.

Its strategic location between Brisbane and the Gold Coast makes it appealing for commuters, while modern housing and strong rental demand make it equally attractive to investors seeking long-term growth and reliable returns.

Disclaimer:

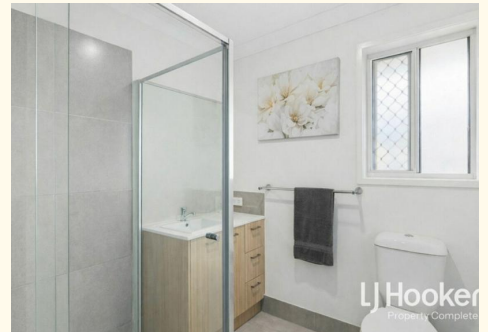
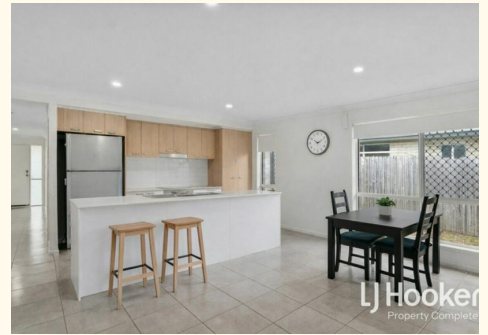
Property images may have been digitally altered or staged for marketing purposes and may not constitute a complete representation of the property condition being purchased. Any photographs used by LJ Hooker may only show certain aspects of the property at the time the photographs are taken and any prospective buyer should inspect the property.

MORE DETAILS

Property ID	2178HGS
Property Type	House
House Size	178 m2
Land Area	425 m2
Including	Ensuite
	Air Conditioning
	Toilets (2)
	Dishwasher
	Outdoor Entertaining
	Built-in-Robes
	Secure Parking
	Fully Fenced
	Remote Garage

Christie Smith 0419 684 184
 Principal & Licensee | csmith@ljhcomplete.com.au
Trudy Weaver 0429 935 125
 Sales Consultant | tweaver@ljhcomplete.com.au

LJ Hooker Property Complete 1300 360 388
 Level 1, 32 Everglade Street, YARRABILBA QLD 4207
propertycomplete.ljhooker.com.au | admin@ljhcomplete.com.au



1 Neumann Drive, Yarrabilba



This floor plan including furniture, fixture measurements and dimensions are approximate and for illustrative purposes only. All enquiries must be directed to the agent, vendor or party representing this floor plan.

