



25 Karril Turn, Yanchep


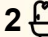
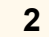
Modern Corner Block Living Just Minutes from Yanchep Beach

A modern home on a generous 622sqm corner block, this property offers the perfect combination of space, comfort and convenience and it's one not to be overlooked for price or practicality. Featuring four bedrooms, two bathrooms, and multiple living zones including a lounge, study and activity area, this home is designed with family living in mind.

Inside, you'll find a light and bright interior with quality finishes throughout including downlights, and roller blinds. The master suite is positioned at the front of the home and features a walk-in robe and a stylish ensuite with double vanities.

A separate lounge provides the ideal spot for relaxing or movie nights, while the study offers a quiet space to work from home. The minor bedrooms are generous in size, each with built-in robes, and are located in their own family zone alongside a versatile activity area perfect for kids or guests.

The modern open-plan kitchen is fully equipped with stainless steel appliances, ample bench and storage space, and overlooks the spacious family and dining area. From here, sliding doors open to a

4  2  2 

FOR SALE
\$869k+ Open Mon 5:45pm

VIEW
Mon 11th May @ 5:45PM - 6:00PM

AGENTS
Ian Knight
0413 447 016
ian.knight@ljhooker.com.au

Tommy Simpson
0411 584 120
tommy.simpson@ljhooker.com.au

AGENCY
LJ Hooker Joondalup
(08) 9300 2100

All information contained therein is gathered from relevant third parties sources.
We cannot guarantee or give any warranty about the information provided.
Interested parties must rely solely on their own enquiries.

 **LJ Hooker**

paved alfresco and a large lawned backyard perfect for entertaining or watching the kids play.

Additional features include ducted evaporative air conditioning and a double lock-up garage, completing a home that combines comfort, functionality and great value.

Perfectly positioned for lifestyle and convenience, this home is only 80m to Parktree Park, 4 minutes to Yanchep Train Station, 3 minutes to Yanchep Beach Primary School, and 5 minutes to Yanchep Beach. Enjoy being within walking distance to local favourites like Lil Sista's Café and Campground Adventure Park, with Woolworths, Aldi, dining and entertainment options all less than 2km away, and the spectacular Lagoon and Fisherman's Hollow just 2.1km from your door

2025/2026 Outgoings

Water: \$1,209.70

Council: TBA

Please be aware that these figures are approximate only

MORE DETAILS

Property ID	M4THRD
Property Type	House
House Size	208 m2
Land Area	622 m2

Ian Knight 0413 447 016

Residential Sales Specialist | ian.knight@ljhooker.com.au

Tommy Simpson 0411 584 120

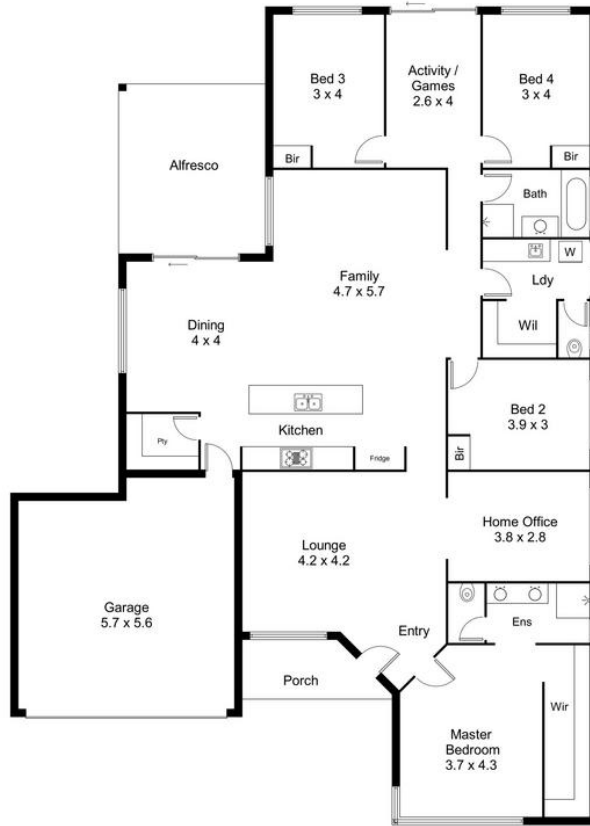
Buyers Agent | tommy.simpson@ljhooker.com.au

LJ Hooker Joondalup (08) 9300 2100

4/25 Delage Street, JOONDALUP WA 6027

joondalup.ljhooker.com.au | admin.joondalup@ljhooker.com.au





25 Karril Turn, Yanchep

/ for information and guidance purpose only /
measurements shown are approximate

All information contained therein is gathered from relevant third parties sources.
We cannot guarantee or give any warranty about the information provided.
Interested parties must rely solely on their own enquiries.

