



1 Packet Place, Yanchep

## Big Corner Block with Space, Shade & Potential

Set on a generous 870sqm corner block, this early Dale Alcock build offers outstanding space, flexibility and future opportunity. With drive-through access and room to move around the home, there's ample space for additional vehicles, trailers or future enhancements.

The established trees - including fig and loquat - provide beautiful natural shade and privacy, while the expansive backyard and large alfresco area create an ideal setting for entertaining or relaxing outdoors. With this much land, the potential is clear - whether it's further improvements, extra storage or simply enjoying the space.

Inside, the home offers a functional layout with a well-appointed kitchen flowing through to the living and meals area, forming the central hub of the home. Bedrooms include built-in robes, while the master bedroom features a walk-in robe and convenient semi-ensuite access.

A solid home on a substantial block in a lifestyle location that continues to grow in demand.

### Location Features

All information contained therein is gathered from relevant third parties sources. We cannot guarantee or give any warranty about the information provided. Interested parties must rely solely on their own enquiries.

3 1 0

### FOR SALE

Please Call

### AGENTS

Ian Knight  
0413 447 016  
ian.knight@ljhooker.com.au

### AGENCY

LJ Hooker Joondalup  
(08) 9300 2100



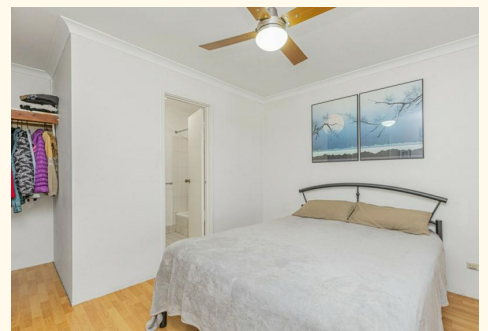
Approximately 3-minute drive to Yanchep Lagoon  
Approximately 3-minute drive to Yanchep Shopping Centre  
Approximately 2-minute drive to Yanchep Beach Primary School  
Approximately 4-minute drive to Yanchep Secondary College  
Approximately 1-minute drive to Oldham Park

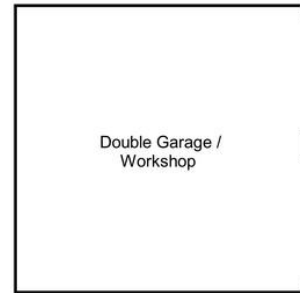
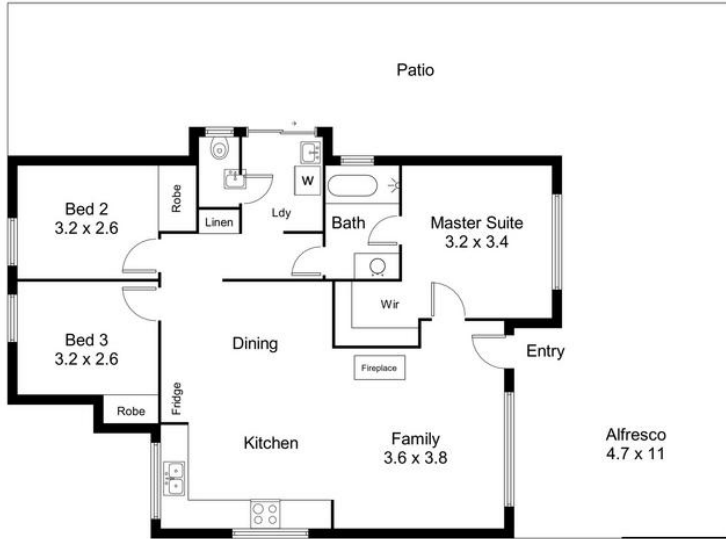
## MORE DETAILS

Property ID	KTHHRD
Property Type	House
House Size	87 m2
Land Area	870 m2

**Ian Knight 0413 447 016**  
Residential Sales Specialist | [ian.knight@ljhooker.com.au](mailto:ian.knight@ljhooker.com.au)

**LJ Hooker Joondalup (08) 9300 2100**  
4/25 Delage Street, JOONDALUP WA 6027  
[joondalup.ljhooker.com.au](http://joondalup.ljhooker.com.au) | [admin.joondalup@ljhooker.com.au](mailto:admin.joondalup@ljhooker.com.au)





# 1 Packet Place, Yanchep

For information and guidance purpose only / measurements shown are approximate