



25 Cashmore Street, Wyreema

## Modern Family Home - Fantastic Investment - Growing Community

The Difference.

Set on a spacious and fully fenced 880m<sup>2</sup> allotment with side access, this contemporary low-set residence combines comfort with functionality. The home features four generously sized bedrooms, all fitted with built-in wardrobes and ceiling fans to support relaxed family living. The master bedroom features a private ensuite and split system air-conditioning for added comfort throughout the seasons. The central hub of the home is the open-plan kitchen, living and dining area, designed to bring people together with ease.

Features include:

- Four bedrooms with ceiling fans and built-in wardrobes
- Main bedroom with ensuite and split system air-conditioning
- Open plan kitchen, living and dining area
- Well-appointed kitchen with gas cooktop, quality oven and dishwasher
- Split system air-conditioning to main living area
- Family bathroom with separate shower and bath

4  2  2 

**FOR SALE**

Price Guide \$750,000 - \$770,000

**VIEW**

Sun 31st May @ 1:00AM - 1:30AM

**AGENTS**

Stephanie Pejkovic  
0429 504 735  
spejkovic@ljht.com.au

**AGENCY**

LJ Hooker Toowoomba  
(07) 4688 2222

All information contained therein is gathered from relevant third parties sources.  
We cannot guarantee or give any warranty about the information provided.  
Interested parties must rely solely on their own enquiries.

 **LJ Hooker**

- Separate toilet for added convenience
- " Covered alfresco area, ideal for entertaining
- " Fully fenced backyard on an 880m<sup>2</sup> block
- Double lock up garage with internal access
- High set block offering natural elevation and drainage advantages

Locations:

- Wyreema Store - 3 Minute Drive (1.7km)
- Wyreema State School - 4 Minute Drive (2.1km)
- Harristown State High School - 14 Minute Drive (14km)
- Drayton Woolworths - 10 Minute Drive (10km)
- Bull & Barley Inn - 7 Minutes (7.4km)
- Westbrook Tavern - 10 Minute Drive (8.4km)

Tenanted: Until late June 2026 at \$550 per week

Rental Appraisal: \$630 per week

Rates: Approximately \$1,344.42 per half year

Water Access: Approximately \$397.27 per half year

**MORE DETAILS**

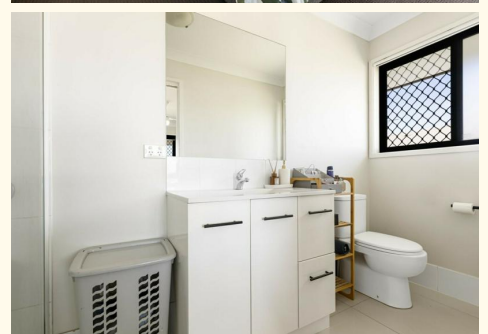
Property ID	1ZXKF4W
Property Type	House
House Size	158 m2
Land Area	880 m2
Including	Ensuite
	Air Conditioning
	Built-in-Robes
	Carpeted
	Roller Door Access

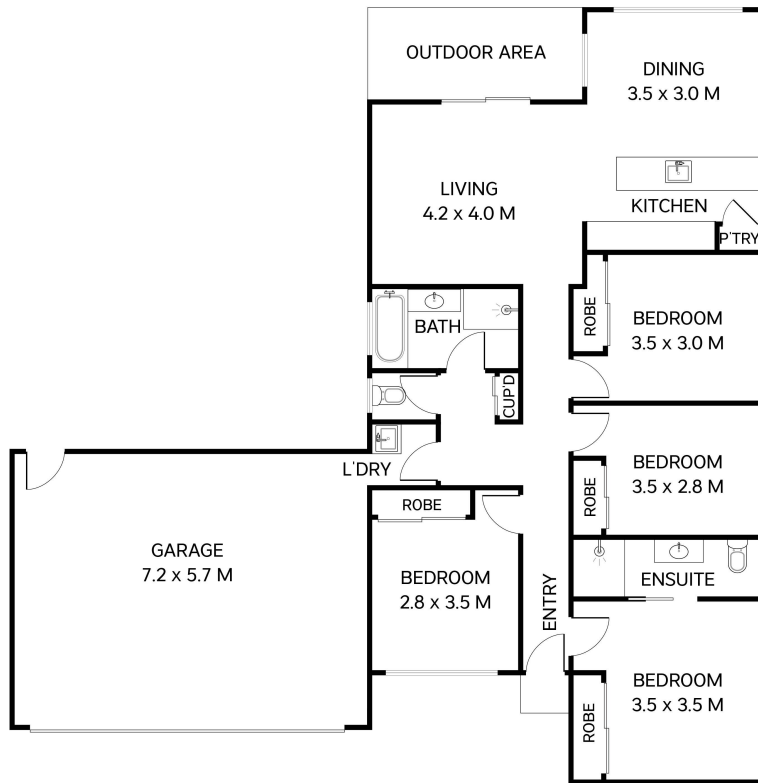
**Stephanie Pejkoic 0429 504 735**

Residential Sales Executive | [spejkovic@ljht.com.au](mailto:spejkovic@ljht.com.au)

**LJ Hooker Toowoomba (07) 4688 2222**

Level 1, 677-683 Ruthven Street, TOOWOOMBA QLD 4350  
[toowoomba.ljhooker.com.au](http://toowoomba.ljhooker.com.au) | [toowoomba@ljht.com.au](mailto:toowoomba@ljht.com.au)





Total: 158m<sup>2</sup>

25 Cashmore Street  
Wyreema



This plan is for representational purposes only. All dimensions are approximate and shouldn't be solely relied upon. Floorplan created by Vue Digital