

Wynn Vale, 22 Lubbock Court

Contemporary Family Living with Impressive Entertaining Area

AUCTION: Onsite, Saturday the 1st of February at 11:00am

Nestled at the end of a quiet cul-de-sac in the picturesque suburb of Wynn Vale, this charming four-bedroom home is the ultimate family retreat. From its delightful interiors to its expansive outdoor areas, every aspect of this property has been designed with family living in mind.

Step inside and discover a light-filled home that exudes warmth and comfort. The centralised kitchen is perfectly positioned to keep the family connected, whether preparing meals, hosting gatherings, or simply enjoying daily life. Two separate living areas provide versatility and space, offering room to relax, entertain, or create a play area for the kids. The home's bright and airy ambiance is complemented by its thoughtful layout, ensuring everyone has their own space to unwind.



Disclaimer: All information contained therein is gathered from relevant third parties sources. We cannot guarantee or give any warranty about the information provided. Interested parties must rely solely on their own enquiries.



For Sale
\$810,000 - \$860,000

View
ljhooker.com.au/2B85GJU

Contact
Carla Doecke
0456 830 122
carlad@ljhsales.com.au

**LJ Hooker Greenwith | Golden Grove
| Mawson Lakes | Modbury
(08) 8289 6660**

Outside, the spacious backyard is a true entertainer's delight. With plenty of room for barbecues, celebrations, or quiet evenings under the stars, it's a space where lasting memories will be made. The property also boasts additional side parking, ideal for a caravan, boat, trailer, or extra vehicles, making it perfect for families with an active lifestyle.

Features you will love:

- * Four bedrooms, master with walk-in robe and ensuite
- * Built-in robes in all other bedrooms
- * Centralised kitchen with gas cooktop, dishwasher and plenty of storage
- * Spacious undercover outdoor entertaining area with well-maintained gardens
- * Ducted evaporative air conditioning providing comfort through the warmer months
- * Contemporary colour schemes and downlights throughout
- * Additional space for car parking or for caravans, trailers or boats
- * Shed
- * ..Plus much more!

Situated in the highly sought-after Wynn Vale area, this home is close to quality schools, parks, shopping centres, and public transport, ensuring convenience at every turn. Whether you're a growing family looking for more space or simply seeking a peaceful place to call home, this property ticks all the boxes.

All information provided has been obtained from sources we believe to be accurate, however, we cannot guarantee the information is accurate and we accept no liability for any errors or omissions (including but not limited to a property's land size, floor plans and size, building age and condition). Interested parties should make their own enquiries and obtain their own legal and financial advice. Should this property be scheduled for auction, the Vendor's Statement may be inspected at either of our two LJ Hooker Property Specialists Real Estate offices for 3 consecutive business days immediately preceding the auction and at the auction for 30 minutes before it starts.

RLA 208516

More About this Property

Property ID	2B85GJU
Property Type	House
House Size	152 m2
Land Area	726 m2
Including	Evaporative Cooling Dishwasher Outdoor Entertaining Built-in-Robes Secure Parking Fully Fenced

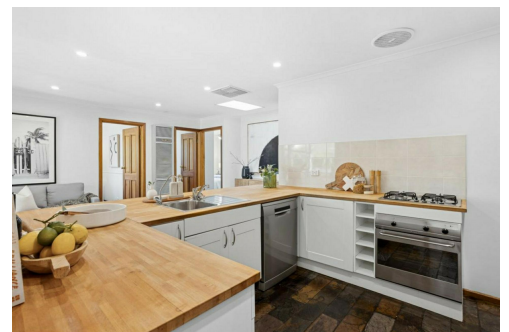
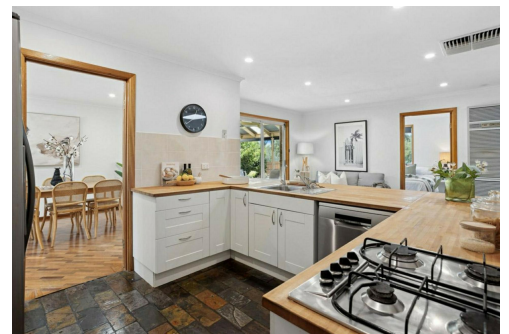
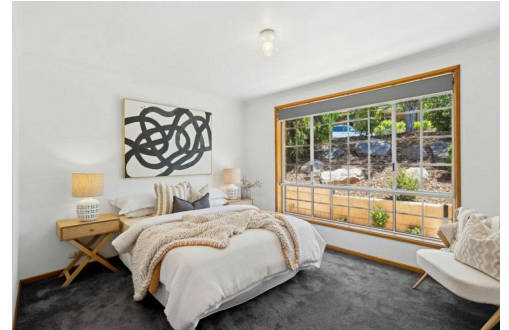
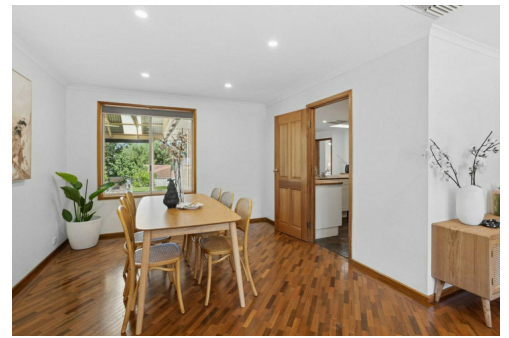
Carla Doecke 0456 830 122
Sales Specialist | carlad@ljhsales.com.au

LJ Hooker Greenwith | Golden Grove | Mawson Lakes | Modbury (08) 8289 6660

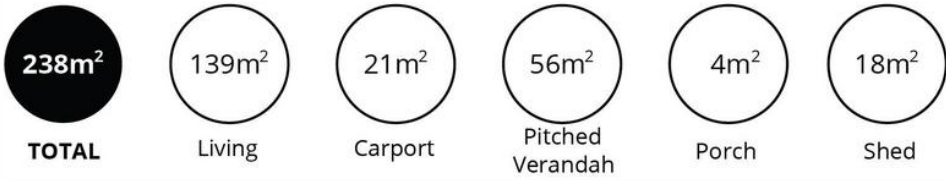
North East, Shop 2, 1007 North East Road, RIDGEHAVEN SA 5097
greenwithgoldengrove.ljhooker.com.au | info@ljhsupport.com.au



Disclaimer: All information contained therein is gathered from relevant third parties sources. We cannot guarantee or give any warranty about the information provided. Interested parties must rely solely on their own enquiries.



**LJ Hooker Greenwith | Golden Grove
| Mawson Lakes | Modbury
(08) 8289 6660**



Scale in metres. This drawing is for illustration purposes only. All measurements are approximate and details intended to be relied upon should be independently verified.

Produced by **The Fotobase Group**