

Wynn Vale, 21 Palomino Parade

Serene Location, Opportunity To Make It Your Own!

Situated in the highly desirable suburb of Wynn Vale-a location that speaks for itself, this home offers exceptional convenience, with everything you need just moments away.

Set on a manageable allotment of approximately 590sqm, the property features a functional layout and expansive gardens, presenting a fantastic opportunity for those looking to create their ideal family home

Features you will love:

- * Three bedrooms, master with ceiling fan
- * Solid brick construction
- * Light-filled living area with split-system heating and cooling, ideal for year-round comfort
- * Central kitchen with gas cooktop, breakfast bar, and ample storage and bench space
- * Spacious laundry with storeroom/pantry
- * Generous outdoor entertainment area with glimpses of the foothills-ideal for family



Disclaimer: All information contained therein is gathered from relevant third parties sources. We cannot guarantee or give any warranty about the information provided. Interested parties must rely solely on their own enquiries.



For Sale
\$649,000

View
ljhooker.com.au/2BCWGJU

Contact
Carla Doecke
0456 830 122
carlad@ljhsales.com.au

Ryan Graham
0400 912 287
ryang@ljhsales.com.au

LJ Hooker Greenwith | Golden Grove
| Mawson Lakes | Modbury
(08) 8289 6660

gatherings and BBQs. Relax with friends while overlooking the gardens.

- * Timber Venetian blinds in all bedrooms and living area
- * Sufficient off-street parking with a single carport and space for multiple vehicles
- * Moments away from Wynn Vale Dam and adjacent to Palomino Reserve

Spend quality family time strolling along some of the most scenic walking trails around Wynn Vale Dam, or enjoy weekends at the many nearby reserves and parks, including the adjacent Palomino Parade playground.

Adding to the appeal is the home's proximity to several quality schools, including Gleeson College, Pedare Christian College, and Golden Grove High School, as well as multiple early learning centres. You're also close to The Grove Shopping Centre, Westfield Tea Tree Plaza, Modbury Hospital, numerous sporting clubs, and a variety of public transport options, including the O-Bahn for an easy commute to the Adelaide CBD.

Contact Ryan Graham to register your interest!

All information provided has been obtained from sources we believe to be accurate, however, we cannot guarantee the information is accurate and we accept no liability for any errors or omissions (including but not limited to a property's land size, floor plans and size, building age and condition). Interested parties should make their own enquiries and obtain their own legal and financial advice. Should this property be scheduled for auction, the Vendor's Statement may be inspected at either of our two LJ Hooker Property Specialists Real Estate offices for 3 consecutive business days immediately preceding the auction and at the auction for 30 minutes before it starts.

RLA 208516

More About this Property

Property ID	2BCWGJU
Property Type	House
House Size	106 m2
Land Area	590 m2
Including	Air Conditioning Outdoor Entertaining Fully Fenced

Carla Doecke 0456 830 122

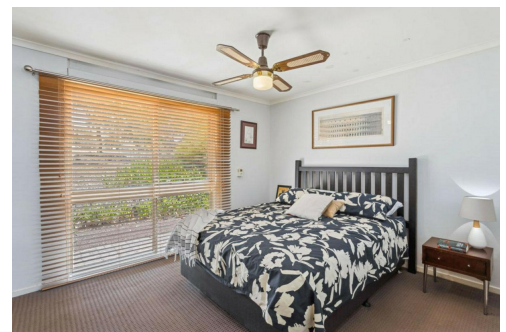
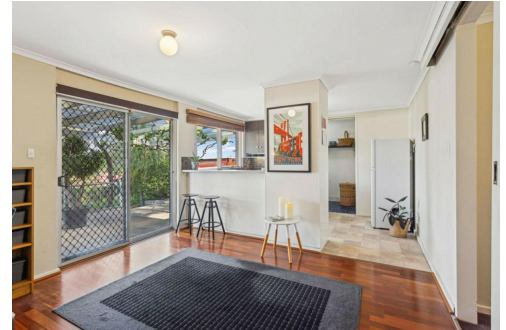
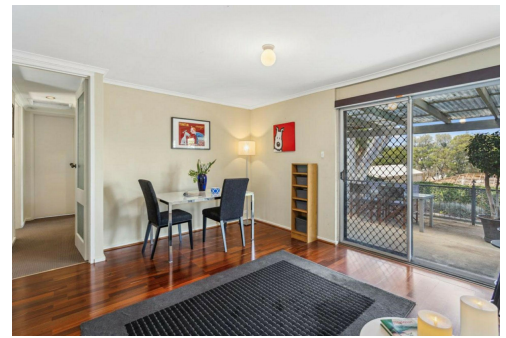
Sales Specialist | carlad@ljhsales.com.au

Ryan Graham 0400 912 287

Sales Specialist | ryang@ljhsales.com.au

LJ Hooker Greenwith | Golden Grove | Mawson Lakes | Modbury (08) 8289 6660

North East, Shop 2, 1007 North East Road, RIDGEHAVEN SA 5097
greenwithgoldengrove.ljhooker.com.au | info@ljhsupport.com.au



Disclaimer: All information contained therein is gathered from relevant third parties sources. We cannot guarantee or give any warranty about the information provided. Interested parties must rely solely on their own enquiries.

**LJ Hooker Greenwith | Golden Grove
| Mawson Lakes | Modbury
(08) 8289 6660**



172m²

TOTAL

102m²

Living

12m²

Shed

29m²

Carport

11m²

Pergola

18m²

Verandah

Scale in metres. This drawing is for illustration purposes only. All measurements are approximate and details intended to be relied upon should be independently verified.

Produced by **The Fotobase Group**