


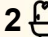
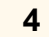


329 New Buildings Road, Wyndham

WHISPERING CREEK - WHERE NATURE AND CRAFTSMANSHIP UNITE

Tucked away in the tranquil hinterlands of the Bega Valley, Whispering Creek offers an extraordinary lifestyle opportunity across 100 acres of pristine native pastures and bushland. This is more than a property-it's a sanctuary where privacy, peace, and self-sufficiency meet timeless rural charm.

Built with authenticity and care, the beautifully crafted main residence showcases the use of onsite materials-handmade mud brick, granite stone, and timber-creating a natural connection between the home and its surroundings. The interior exudes warmth and rustic character, with raked ceilings and exposed beams enhancing the sense of space. A new kitchen featuring Tasmanian oak benchtops complements the slate, Kalaru red brick, and polished concrete floors. The main bedroom opens through French doors, bedroom two captures the landscape through large picture windows, and the loft bedroom offers elevated views of the property. The bathroom features unique mosaic tiling, and the home's entry verandah and feature rock retaining walls provide a welcoming first impression.

4  2  4 

FOR SALE
\$1,290,000

AGENTS

Paul Griffin
0400 024 300
pgriffin@ljhbega.com.au

AGENCY

LJ Hooker Bega
(02) 6492 4300

All information contained therein is gathered from relevant third parties sources.
We cannot guarantee or give any warranty about the information provided.
Interested parties must rely solely on their own enquiries.

 **LJ Hooker**

A short stroll away, the second dwelling- a hand-built hardwood cabin crafted from 100-year-old timber slabs salvaged from an original settler's cottage - offers a charming and authentic retreat. With an open-plan layout, adjoining sun room and bathroom, outdoor bath, and a stunning deck overlooking the landscape, it's the ideal guest space or a lucrative 5-star Airbnb. The cabin's outdoor kitchen and recycled materials add to its earthy charm and connection to place.

Outdoors, the property continues to impress with its self-sufficient and sustainable lifestyle. An established orchard, vegetable gardens, and efficient water systems are supported by multiple tanks - including an 11,000-gallon concrete tank, a 130,000-litre steel tank, and a 3,000-gallon orchard tank-all fed by natural springs, creeks, and dams that provide year-round water security.

For horse lovers, the property features a full-size dressage arena, round yard, and stables, while a large four-bay steel shed and additional workshop provide space for machinery and tools. The property's sealed road access and connection to mains power add convenience without compromising its peaceful isolation.

Hidden within the landscape lies a remarkable natural wonder-an ancient dry fig forest, where giant native figs entwine around granite tors in a rare remnant ecosystem unique to the Bega Valley. This serene, almost spiritual setting is a place for reflection, exploration, and connection to nature.

Located just 40 km from the pristine beaches of the Sapphire Coast, two and a half hours from the Snowy Mountains, and a short drive to a private river swimming spot, Whispering Creek perfectly balances coastal, country, and alpine living.

With its rustic, earthy aesthetic, strong self-sustainable focus, and the rare combination of beauty, privacy, and practicality, Whispering Creek is more than a property- it's a lifestyle that celebrates craftsmanship, nature, and peace in perfect harmony.

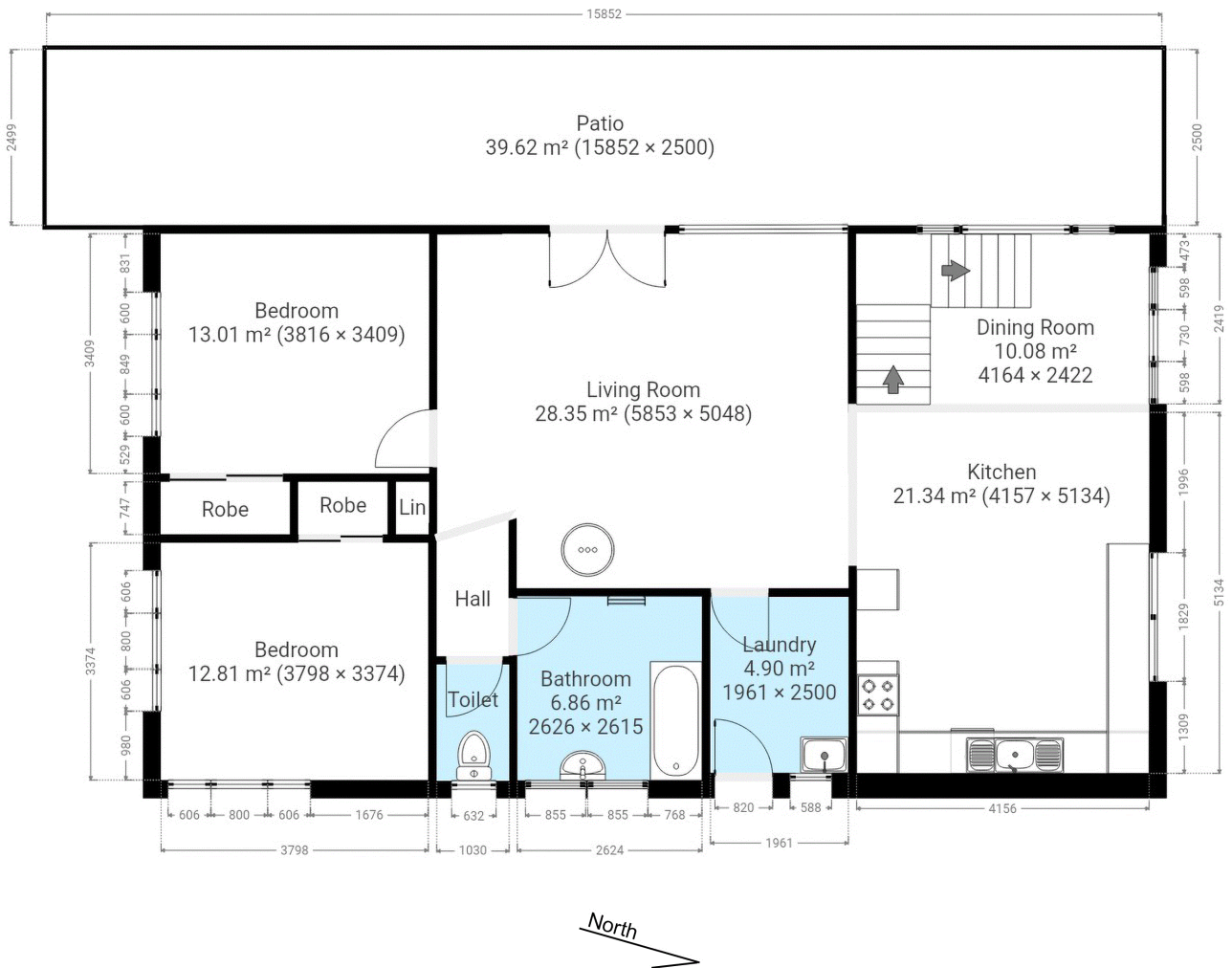
MORE DETAILS

Property ID	NYMFGN
Property Type	AcreageSemi-rural
Land Area	102.18 acre

Paul Griffin 0400 024 300
Licensee & Principal | pgriffin@ljhbega.com.au

LJ Hooker Bega (02) 6492 4300
225 Carp Street, BEGA NSW 2550
bega.ljhooker.com.au | office@ljhbega.com.au





This plan is intended for marketing purposes only. All dimensions are approximate.

329 New Buildings Rd New Buildings

All information contained therein is gathered from relevant third parties sources. We cannot guarantee or give any warranty about the information provided. Interested parties must rely solely on their own enquiries.

