



Sold



26 Linden Crescent, Wulguru

UNDER OFFER.....

Perched on the hillside in sought-after Wulguru, this architecturally designed home offers an abundance of space, character, and opportunity. Designed with generous proportions throughout, the home boasts soaring ceilings, striking timber features, and multiple living areas that cater perfectly to family living.

On the lower level, you'll find two expansive living zones, including a step-down lounge highlighted by dramatic timber ceilings, slate flooring, and a mix of carpet and tiles. The central kitchen is truly the heart of the home - complete with a large island bench, extensive cupboard and bench space, and direct access to the laundry and bathroom for added convenience. A massive study sits just off the kitchen, ideal for those working from home.

Upstairs, there are four well-sized bedrooms, each fitted with split system air-conditioning for year-round comfort. The main bedroom features a walk-through robe to the private ensuite and opens to a charming little patio via sliding doors - a perfect spot to enjoy your morning coffee. The additional bedrooms offer built-ins, and one has access to a family bathroom in a bold, retro-inspired colour scheme that could be refreshed to suit your style. A smaller fourth bedroom provides a flexible option for a nursery, guest room, or home office.

4 🏠 3 🚗 2 🚘

FOR SALE
Offers over \$650,000

AGENTS
Suzanne Coverlid
0439 032 210
suzanne.coverlid@ljhooker.com.au

AGENCY
LJ Hooker Townsville
07 44262125

All information contained therein is gathered from relevant third parties sources. We cannot guarantee or give any warranty about the information provided. Interested parties must rely solely on their own enquiries.



FEATURES INCLUDE:

- Two large living areas
- Kitchen with island bench
- Office or fifth bedroom
- Laundry and third bathroom
- Four bedrooms upstairs
- Main has walk through robes and ensuite
- Main bathroom is nestled between the other bedrooms

While the home is ready for some cosmetic updates, the solid bones, unique architectural features, and sheer size present an exciting opportunity to create something truly special.

Outside, a carport is located at the base of the driveway, with steps leading up to the home - adding privacy and an elevated outlook.

This one is all about potential. With a little vision, you can transform this architect-designed property into the dream home you've been searching for

MORE DETAILS

Property ID	41WHWK
Property Type	House
Land Area	731 m2

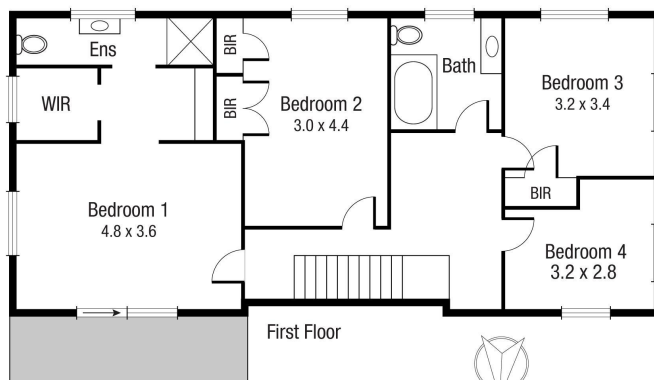
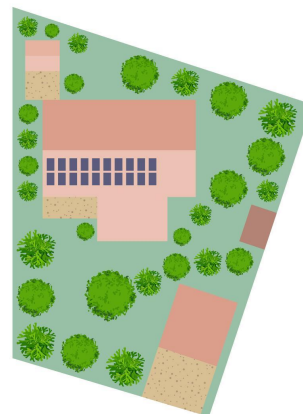
Suzanne Coverlid 0439 032 210

Sales & Marketing Consultant | suzanne.coverlid@ljhooker.com.au

LJ Hooker Townsville 07 44262125

Shop 18/39 Eyre Street, NORTH WARD QLD 4810
townsville.ljhooker.com.au | townsville@ljhooker.com.au





Scale in metres. Indicative only. Dimensions are approximate. All information contained herein is gathered from sources we believe to be reliable. However we cannot guarantee its accuracy and interested persons should rely on their own enquiries.

TOTAL AREA : 211.1 sq.m

26 Linden Cr, Wulguru