

29 Harriott Street, Wright


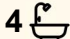

Luxury, Space and Family Flexibility

Positioned in one of Wright's most desirable streets, this impressive contemporary residence delivers an exceptional combination of space, quality and versatility.

Set across a generous 500sqm parcel and thoughtfully designed for modern family living, the home offers an expansive floorplan with four bedrooms, four bathrooms and multiple living zones that adapt effortlessly to growing families and multi-generational households.

From the moment you arrive, the home's striking street presence sets the tone for what lies within. Inside, light-filled interiors are complemented by high-quality finishes, creating a sophisticated yet welcoming environment. The heart of the home is the open plan living and dining area, where generous proportions provide the perfect setting for everyday family life and large-scale entertaining alike.

The well-appointed kitchen and adjacent butler's pantry anchor the open plan living and dining, and offers an abundance of storage, preparation space and functionality for those who love to cook and entertain. Sliding doors connect seamlessly to the outdoor kitchen and entertaining area, creating a natural extension of the home's living

4  4  2 

FOR SALE
By Negotiation

VIEW
By Appointment

AGENTS
Charles Martin
0414 544 796
charles.martin@ljhwoodenweston.com.au

AGENCY
LJ Hooker Woden | Weston
(02) 6288 8888

All information contained therein is gathered from relevant third parties sources.
We cannot guarantee or give any warranty about the information provided.
Interested parties must rely solely on their own enquiries.

 **LJ Hooker**

spaces and providing the ideal setting for weekend gatherings with family and friends.

Accommodation is equally impressive, with four generously sized bedrooms and the rare luxury of four bathrooms, providing outstanding comfort and privacy for every member of the household. Whether accommodating teenagers, guests or extended family, the flexible layout offers a level of practicality seldom found in modern homes.

Constructed in 2022 and offering approximately 191sqm of living, the residence combines contemporary design with the low-maintenance lifestyle that has made Wright one of Canberra's most sought-after suburbs. Positioned moments from local parks, walking trails, quality schools and the conveniences of Cooleman Court, the location provides outstanding connectivity to both Woden, Belconnen and the City town centres.

A home of substantial scale, modern luxury and exceptional versatility, this is an opportunity to secure a premium family residence in the heart of the Molonglo Valley.

Features:

- Multiple living and entertaining spaces
- Contemporary open plan design
- Seamless indoor-outdoor connection
- Premium family-friendly location
- Close to schools, parks and local amenities
- Underfloor heating
- Solar system
- Low maintenance gardens

Figures:

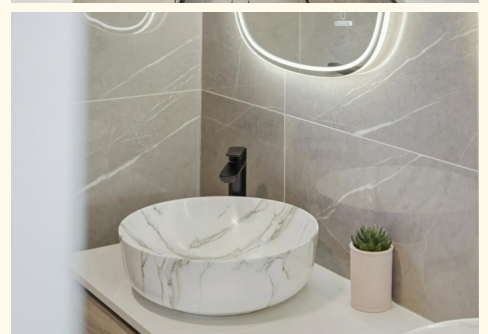
Block: 500m2
Living: 191m2
Building: 233m2
Rates: \$4,091 p.a. approx.
Land Tax (if applicable): \$8,086 p.a. approx.
EER: 5.5 Stars
UV: \$670,000

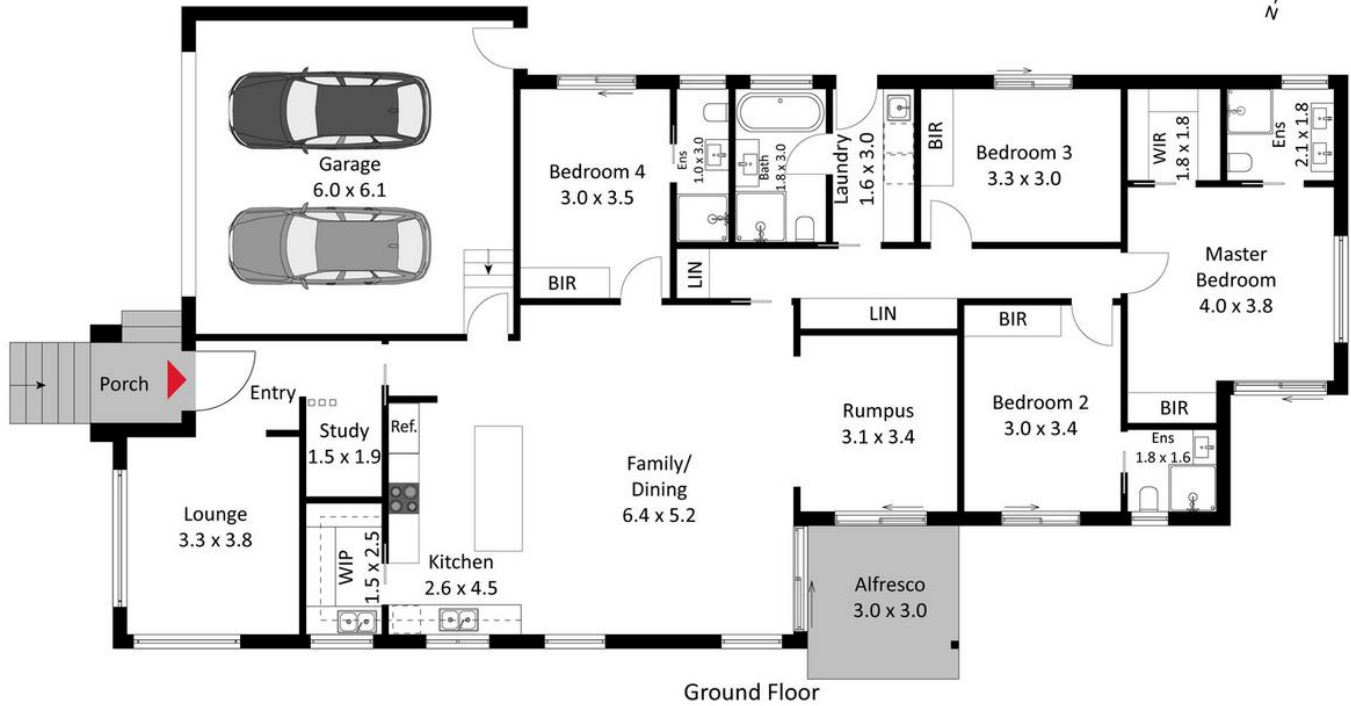
MORE DETAILS

Property ID	JYNH5W
Property Type	House
House Size	190 m2
EER	5.5

Charles Martin 0414 544 796
Licensed Agent ACT / NSW |
charles.martin@ljhwodenweston.com.au

LJ Hooker Woden | Weston (02) 6288 8888
23 Brierly Street, WESTON CREEK ACT 2611
westoncreek.ljhooker.com.au | reception@ljhwodenweston.com.au





Ground Floor

The floor plan is not to scale; measurements are indicative and in metres. Exterior elements are not in position. Plans should not be relied on. Interested parties should make and rely on their own enquiries.

29 Harriott Street, Wright