






608/76 Steve Irwin Avenue, Wright

Stylish, Functional and Convenient

This beautifully presented two bedroom apartment on level 6 of the popular KOKO development offers the perfect balance of style, comfort, and functionality, making it an ideal choice for modern living with unbeatable convenience.

As you step inside, you'll find a generous open-plan layout that seamlessly connects the living, dining, and kitchen areas, creating a warm and inviting atmosphere, ideal for both entertaining and relaxing. Natural light pours in through the large double glazed windows, enhancing the sense of space and brightness throughout. Step out onto the spacious balcony and enjoy the stunning views, perfect for alfresco dining or unwinding after a busy day.

The kitchen is a chef's delight, boasting stone waterfall benchtops, sleek cabinetry, and premium SMEG appliances, including an induction cooktop. Whether it's a quick breakfast or a dinner party, this kitchen is designed to impress. The two bedrooms are thoughtfully positioned on opposite sides of the apartment for privacy and comfort. The main bathroom is elegantly styled with full-height tiling and modern finishes.

2  2  2 

FOR SALE
\$549,000+

AGENTS

Hamid Muradi
0424 858 600
hamid.muradi@ljhookerprojects.com.au

AGENCY

LJ Hooker Canberra City
(02) 6249 7700

All information contained therein is gathered from relevant third parties sources.
We cannot guarantee or give any warranty about the information provided.
Interested parties must rely solely on their own enquiries.

 **LJ Hooker**

As part of the KOKO community, you'll enjoy access to resort-style amenities including a rooftop pool, sky garden, and alfresco entertaining areas, perfect for weekend relaxation or socialising with friends. Wright offers an exceptional lifestyle with nearby parks, walking and cycling trails, Coombs shops, schools, a medical centre, and a variety of cafes, restaurants, and specialty stores right at your doorstep.

Features:

- Development: KOKO, designed by Oztal Architects
- Hybrid vinyl plank timber-look flooring, carpet to bedrooms
- Induction cooktop & premium SMEG appliances
- Stone waterfall benchtop
- Reverse cycle heating & cooling in living and main bedroom
- Externally ducted rangehood & soft-close kitchen joinery
- Light-filled open plan living
- Floor-to-ceiling double-glazed windows
- Wall-hung vanities & full-height bathroom tiling
- Level 6 apartment with stunning views
- Ample storage throughout
- Electric hot water unit & European laundry
- LED lighting & high ceilings
- FTTP ready & pet friendly
- 2 secure basement car spaces plus storage cage
- Resort-style rooftop pool, sky garden & alfresco areas
- Convenient access to shops, cafes, Capital Chemist, Woolworths, and more

Essentials:

- " Vantage Strata: \$890 per quarter (approx.)
- " Rental estimate: \$580—\$600 per week
- " Rates: \$427 per quarter (approx.)
- " Internal 73ms, balcony 25ms and Total size: 98 m²
- Age: 1 year
- EER: 6

Photography Disclaimer: Some images may have been virtually staged to better showcase the true potential of the rooms and spaces in the home. Alternatively, while the property may have been staged for photography, it might be vacant during your inspection.

MORE DETAILS

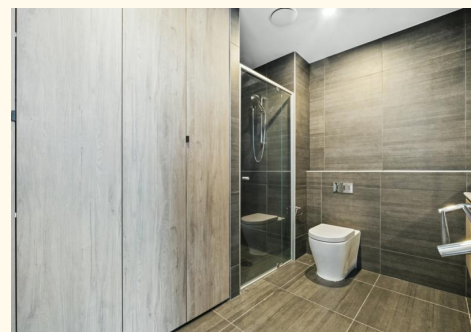
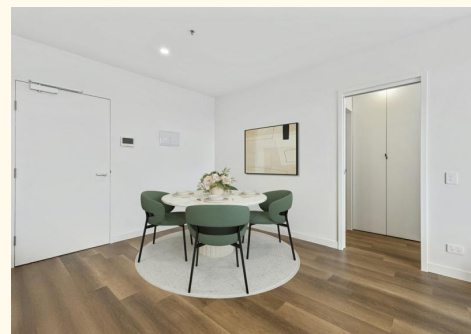
Property ID	2DU6FHK
Property Type	Apartment
House Size	98 m ²
EER	6

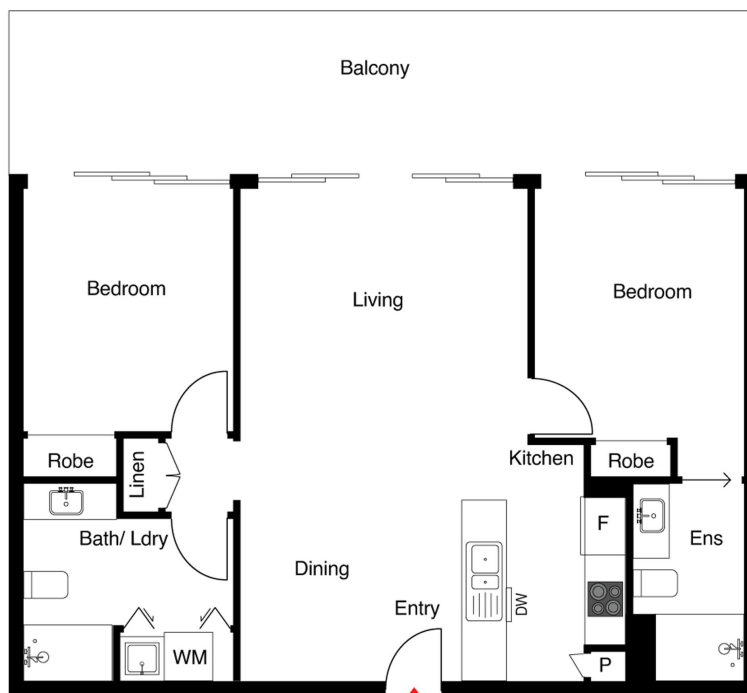
Hamid Muradi 0424 858 600

Sales Consultant | hamid.muradi@ljhookerprojects.com.au

LJ Hooker Canberra City (02) 6249 7700

1st Floor, 182 - 200 City Walk, CANBERRA CITY ACT 2601
canberracity.ljhooker.com.au | canberracity@ljhooker.com.au





The floor plan is not to scale; measurements are indicative and in metres. Exterior elements are not in position. Plans should not be relied on. Interested parties should make and rely on their own enquiries.

608/76 Steve Irwin Avenue, Wright