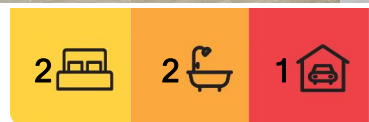


Woorim, 3/12 Murray Street

Nothing Left To Do-Surfside

Fully renovated throughout with no expense spared. Located in sought after Murray Street, Woorim. Simply, park the car and you are amongst it, a stone's throw away from the Beach, Surf Club, Coffee Shops, Pub, IGA and restaurants. This top floor unit has a beautiful tree top outlook across Woorim and captures the sound of the ocean. It features open plan living, zone controlled ducted air conditioning, 600 x 600 main floor tiles, stone waterfall benchtop with shaker cabinets in the large kitchen. It has floor to ceiling tiling in both bathrooms, 3 balconies with one fully enclosed that can be used for extra storage. A massive 9 metre garage in a small complex of 4 units (2 per floor) and 2 large undercover visitor carparks. Low body corporate of \$4k per annum.



For Sale
Please Call

View
l.jhooker.com.au/WV5HCP

Contact
John Farren-Price
0418 887 891
jfarrenprice@l.jhooker.com.au



LJ Hooker Bribie Island
(07) 3400 1900

Disclaimer: All information contained therein is gathered from relevant third parties sources. We cannot guarantee or give any warranty about the information provided. Interested parties must rely solely on their own enquiries.

More About this Property

Property ID	WV5HCP
Property Type	Unit
Including	Balcony Outdoor Entertaining

John Farren-Price 0418 887 891

Licensed Real Estate Agent | jfarrenprice@ljhooker.com.au

LJ Hooker Bribie Island (07) 3400 1900

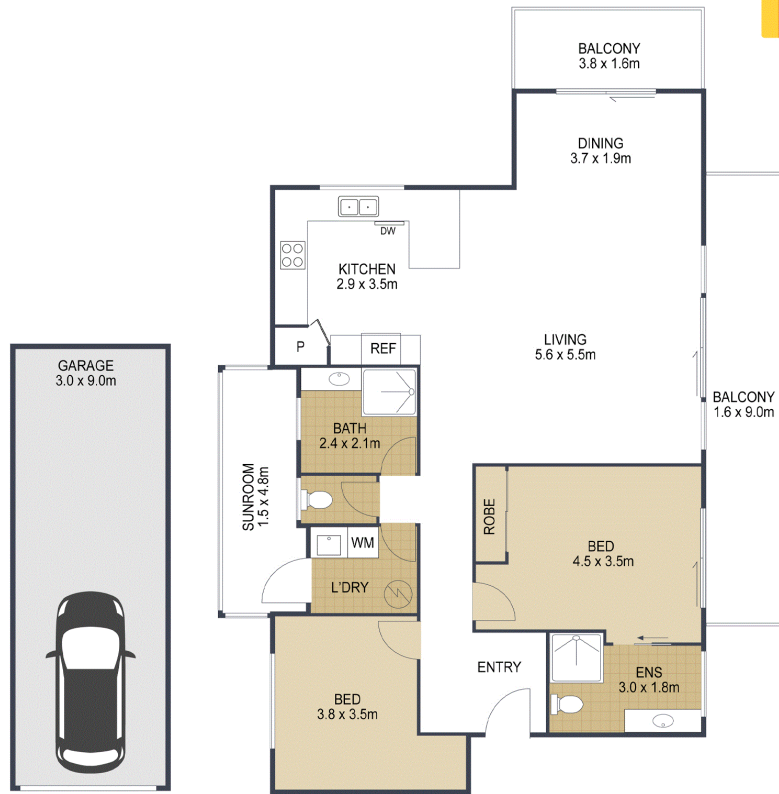
16/19 Benabrow Avenue, BELLARA QLD 4507

bribieisland.ljhooker.com.au | sales.bribieisland@ljhooker.com.au



**LJ Hooker Bribie Island
(07) 3400 1900**

Disclaimer: All information contained therein is gathered from relevant third parties sources. We cannot guarantee or give any warranty about the information provided. Interested parties must rely solely on their own enquiries.



	
	2
	2
	1.5
TOTAL:	130m²

3/12 Murray Street, WOORIM

ARTIST'S IMPRESSION ONLY: While every attempt has been made to ensure the accuracy of this floor plan's areas and measurements of doors, windows, rooms and all other items are approximate and no responsibility is taken for any error, omission, or mis-statement. This plan is for illustrative purposes only and should only be used as such by any prospective purchaser. Floor plan by: www.open2view.com.au

