

8 Halley Crescent, Woonona

Family Living | North-Facing | Poolside Comfort

Set in a quiet, well-established pocket, this solid brick home offers comfortable family living with a sunny north-facing aspect, a generous backyard and scope to update over time.

The home offers two living spaces, including an oversized main living area with high raked ceilings and exposed timber beams. The renovated kitchen, complete with a double oven and dishwasher, is well positioned for everyday living and entertaining.

At the rear, the level north-facing backyard provides a great space for families, with an in-ground pool, entertaining area, pizza oven and established vegetable gardens. Enjoy a leafy green outlook over reserve land, with gate access through towards Woonona village, adding both privacy and convenience.

Featuring five bedrooms with built-in wardrobes and three bathrooms, the home includes a spacious master with a renovated ensuite and walk-in robe, offering a practical layout suited to growing families. Solar and ducted air conditioning enhance everyday comfort, with a double garage and garden shed providing additional storage and functionality.

5 3 2

AUCTION

Sat 2nd May @ 1:30PM

VIEW

Thu 23rd Apr @ 5:00PM - 5:30PM

AGENTS

Martin Merritt
0412 424 226
martin.merritt@ljhwollongong.com.au

Alissa Woldhuis
0401 659 720
alissa.woldhuis@ljhwollongong.com.au

AGENCY

LJ Hooker Wollongong | Corrimal | Shellharbour
(02) 4229 8600

All information contained therein is gathered from relevant third parties sources. We cannot guarantee or give any warranty about the information provided. Interested parties must rely solely on their own enquiries.



Conveniently located moments from Hollymount Park, this is a well-located home offering space, sunlight and a family-friendly layout, with the flexibility to update and make your own over time.

Features

- Solid brick home in a quiet, well-established pocket
- Five bedrooms, all with built-in wardrobes, and three bathrooms
- Master bedroom with renovated ensuite and walk-in robe
- Level north-facing backyard with in-ground pool, entertaining area, pizza oven and vegetable gardens
- Two living spaces, including oversized main living with raked ceilings and timber beams
- Renovated kitchen with double oven and dishwasher
- Leafy green outlook over reserve land with gate access towards Woonona village
- Solar and ducted air conditioning
- Double garage and garden shed
- Moments from Hollymount Park
- Scope to update and add value over time

MORE DETAILS

Property ID	W30HQZ
Property Type	House
House Size	242 m2
Land Area	558 m2
Including	Ensuite Air Conditioning Ducted Cooling Ducted Heating Toilets (3) Dishwasher Outdoor Entertaining Fully Fenced Remote Garage Solar Panels Close to Shops Pool

Martin Merritt 0412 424 226

Principal | Licenced Real Estate Agent |
martin.merritt@ljhwollongong.com.au

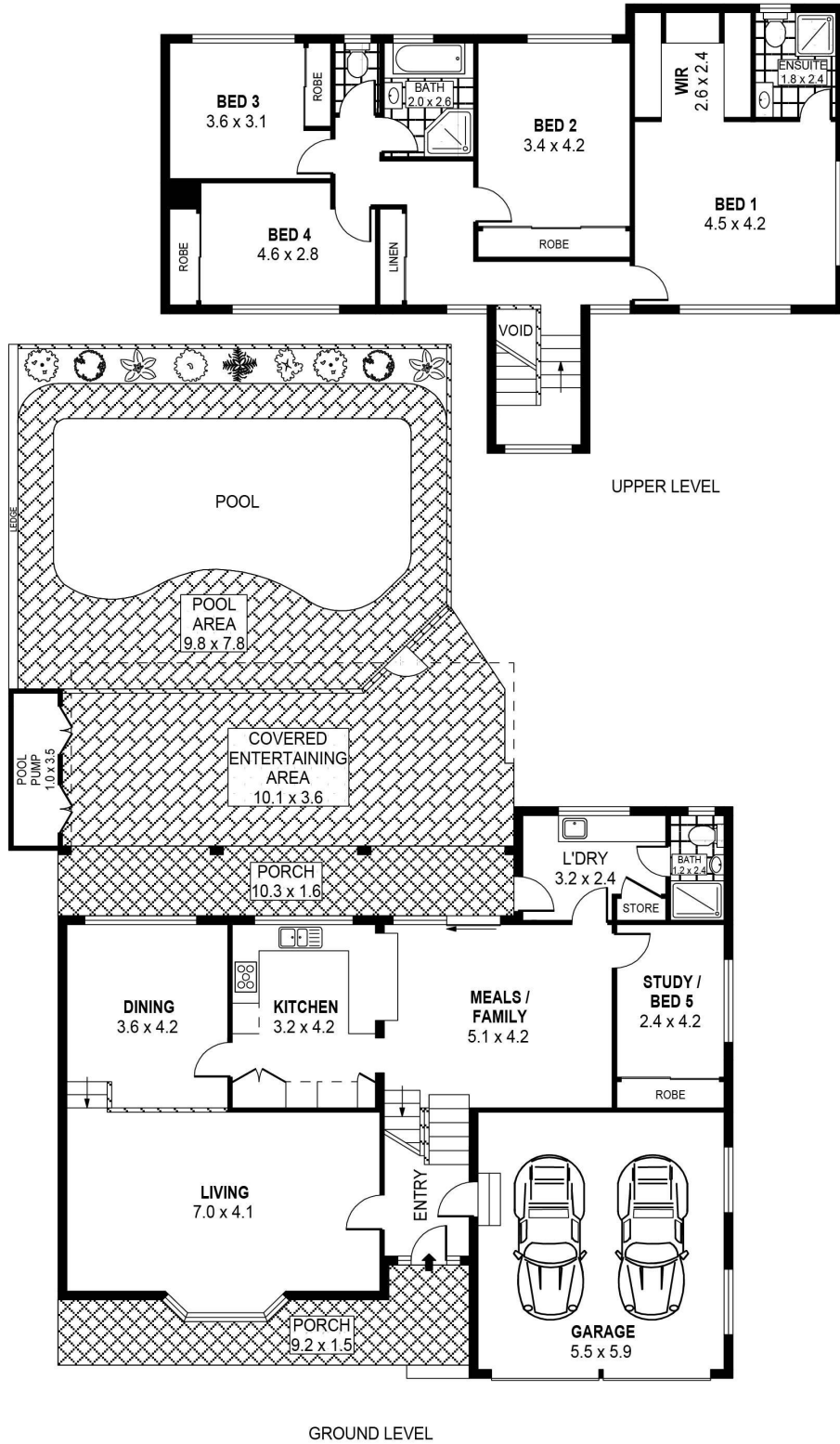
Alissa Woldhuis 0401 659 720

Sales Associate | alissa.woldhuis@ljhwollongong.com.au

LJ Hooker Wollongong | Corrimal | Shellharbour (02) 4229 8600

69 Kembla Street, WOLLONGONG NSW 2500
wollongong.ljhooker.com.au | wollongong@ljhooker.com.au





SCALE (METRES)



INT : 209m²
 EXT : 153m²
 GARAGE : 33m²

PLANS SHOWN ONLY INDICATIVE OF LAYOUT. DIMENSIONS ARE APPROXIMATE.
 Ref. No: 010849

8 HALLEY CRESCENT

WOONONA

All information contained therein is gathered from relevant third parties sources.
 We cannot guarantee or give any warranty about the information provided.
 Interested parties must rely solely on their own enquiries.

