



Woolner, 8/9 Manila Place

Great starter in a top area!

Woolner is a unique suburb, nestled between the edge of the city and the main thoroughfares out to Casuarina and Palmerston and still close to the Parap shopping village and Bayview Marina. The convenience of the location is not to be understated with a short commute into the city for work or for entertainment, and within a few minutes by car to delights as the Museum and Art Gallery of the NT, The Parap Markets, The Darwin Turf Club and both the Bayview and Tipperary Waters Marina's.

This bright and airy 2 bedroom apartment is located on the second floor of this quality complex and includes an open plan living, dining and kitchen area. The balcony is large with enough space for a good size set of table and chairs with views over City Valley Estate which is a very green and well maintained area of Woolner. The main areas of the home are tiled to help keep the property cool



For Sale

\$339,000

View

ljhooker.com.au/5C2HF2X

Contact

Jennifer Wardell

0447 007 474

jwardell@ljhookerdarwin.com.au

Robert Higgins

0418 184 754

rhiggins@ljhookerdarwin.com.au

LJ Hooker Darwin
(08) 8924 0900

Disclaimer: All information contained therein is gathered from relevant third parties sources. We cannot guarantee or give any warranty about the information provided. Interested parties must rely solely on their own enquiries.

and easy to clean, whilst the property is fully airconditioned for maximum comfort. The complex is quite modern with a saltwater inground pool and a well-proportioned gym area. Cars are kept secure behind remote-controlled gates and the escarpment behind the complex provides a lush and exotic backdrop to the property.

- * Highly desirable Woolner location
- * Open plan design with large private balcony
- * Secure parking for 2 cars
- * Communal Pool with great privacy features
- * Air conditioned Gym in the complex
- * Fully tiled and Air conditioned through out

This is a great value property in great condition, there is also a store room dedicated to this unit on the same level for extra storage. Many people live in City Valley due to the convenience of the location and this property is no exception. Move quick, as properties in this building do not last long.

Year built: 2000

Area under Title: 136m²

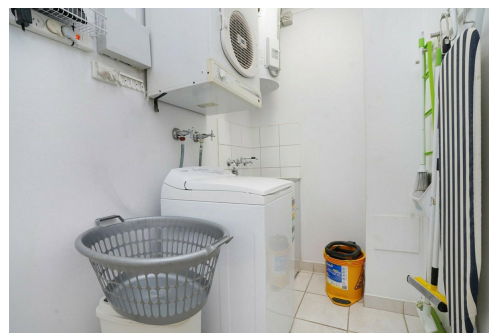
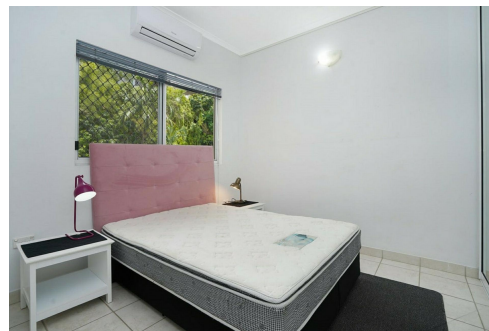
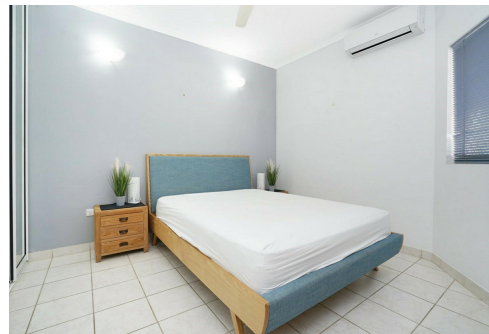
Planning Zone: MR - Medium Densit Residential

Council Rates: \$1,700 per year (approx)

Body Corp Manager: Elite Body Corporate

Body Corp Fees: \$1,285 per quarter (approx)

Status: Ready to move in.



More About this Property

Property ID 5C2HF2X

Property Type Unit

House Size 136 m²

Jennifer Wardell

Sales Representative | jwardell@ljhookerdarwin.com.au

Robert Higgins

Project Planning and Marketing | rhiggins@ljhookerdarwin.com.au

LJ Hooker Darwin (08) 8924 0900

Shop 1/25 Parap Road, PARAP NT 0820

darwin.ljhooker.com.au | reception@ljhookerdarwin.com.au



Disclaimer: All information contained therein is gathered from relevant third parties sources. We cannot guarantee or give any warranty about the information provided. Interested parties must rely solely on their own enquiries.

LJ Hooker Darwin
(08) 8924 0900

This drawing is for illustration purposes only.
All measurement are approximate only and information intended to be relied upon should be independently verified.
Plan by Realistic Views Photography

