

## Woollahra, 14/19 Stanley Street

### Charming Woollahra Retreat with Scenic Views

Nestled in the heart of Woollahra, this delightful apartment offers a harmonious blend of comfort and style. The inviting living area is bathed in natural light, thanks to expansive windows that frame picturesque views of the surrounding greenery, towards Double Bay and Bellevue Hill.

Features include:

- Spacious master bedroom with built in wardrobes and district views
- Private balcony captures a leafy outlook ideal for relaxing
- Modern bathroom is elegantly designed with walk-in shower
- Open plan living and dining framed by large windows and natural light
- Lush communal gardens and a sparkling swimming pool ideal for summer
- Contemporary kitchen with sleek cabinetry and modern appliances

1 1 0

**For Sale**  
Auction | Contact Agent

**View**  
[ljhooker.com.au/244HYY](https://ljhooker.com.au/244HYY)

**Contact**  
**Darran Wyatt**  
0407 440 947  
[darran@ljhdoublbay.com](mailto:darran@ljhdoublbay.com)

# LJ Hooker

**Disclaimer:** All information contained therein is gathered from relevant third parties sources. We cannot guarantee or give any warranty about the information provided. Interested parties must rely solely on their own enquiries.

**LJ Hooker Double Bay**  
**(02) 9185 2816**

# More About this Property

Property ID	244HYY
Property Type	Apartment
Land Area	57 m²

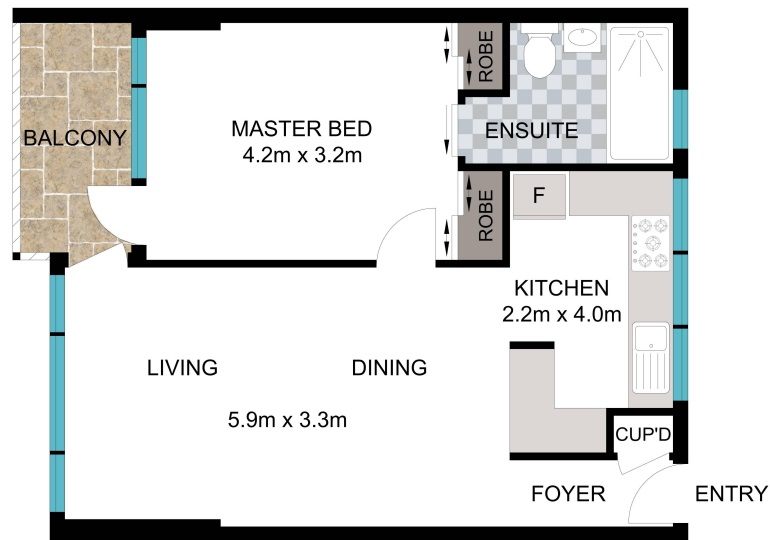
**Darran Wyatt 0407 440 947**  
Associate Director - Wyatt Property Group Pty Ltd | [darran@ljhdoublebay.com](mailto:darran@ljhdoublebay.com)

**LJ Hooker Double Bay (02) 9185 2816**  
38 Ocean Street, WOOLLAHRA NSW 2025  
[doublebay.ljhooker.com.au](http://doublebay.ljhooker.com.au) | [admin@ljhdoublebay.com](mailto:admin@ljhdoublebay.com)



**Disclaimer:** All information contained therein is gathered from relevant third parties sources.  
We cannot guarantee or give any warranty about the information provided. Interested parties must rely solely on their own enquiries.

**LJ Hooker Double Bay**  
**(02) 9185 2816**



Scale in metres. Indicative only. Dimensions are approximate. All information contained herein is gathered from sources we believe to be reliable. However we cannot guarantee its accuracy and interested persons should rely on their own enquiries.

APPROX. INT: 52m<sup>2</sup>  
APPROX. EXT: 5m<sup>2</sup>



14/19 Stanley Street, Woollahra

**LJ Hooker**

**LJ Hooker Double Bay**  
**(02) 9185 2816**

**Disclaimer:** All information contained therein is gathered from relevant third parties sources.  
We cannot guarantee or give any warranty about the information provided. Interested parties must rely solely on their own enquiries.