

4/2A View Street, Woody Point

Coastal Living with Park & Water Views!

Positioned in one of the Peninsula's most sought-after pockets, this beautifully presented unit delivers an unbeatable combination of lifestyle, comfort, and convenience.

As the street name perfectly suggests, you'll be treated to sweeping outlooks across the lush greenery of Woody Point Park and the sparkling waterfront beyond-an ever-changing backdrop that brings a true sense of calm to everyday living.

Set within a quiet and friendly complex, the property offers the added practicality of on-street visitor parking and a secure single lock-up garage with generous storage space-ideal for bikes, beach gear, or additional household items.

Inside, the home is light-filled and functional, featuring an open-plan layout designed for easy living. Year-round comfort is assured with air conditioning, while blinds and curtains throughout provide privacy and a clean, modern finish.

The contemporary kitchen is a standout, complete with stone benchtops, breakfast bar, double sink, oven, electric cooktop,

2 🏠 1 🚿 1 🚗

FOR SALE

For Sale

VIEW

Sat 20th Jun @ 11:00AM - 11:30AM

AGENTS

Danny Mailer

0439 710 862

danny@ljhookerredcliffe.com.au

Arib Khadgi

0401 545 155

arib@ljhookerredcliffe.com.au

AGENCY

LJ Hooker Redcliffe

(07) 3897 5000

All information contained therein is gathered from relevant third parties sources.

We cannot guarantee or give any warranty about the information provided.

Interested parties must rely solely on their own enquiries.



rangehood, and dishwasher - perfectly suited to both everyday meals and entertaining.

Both bedrooms are well-proportioned and thoughtfully appointed, each offering built-in wardrobes, ceiling fan/light combinations, and blinds for comfort and practicality. The updated bathroom maximises space and functionality with a bath/shower combo and a separate toilet for added convenience.

Perfectly located just a short 6-minute drive to Redcliffe CBD, you're also within walking distance to local cafes, restaurants, and iconic waterfront attractions. Enjoy relaxed weekends with fish and chips from the award-winning Seafood Town or unwind with sunset drinks at the popular Belvedere Hotel.

Whether you're a first home buyer, downsizer, or investor, this is coastal living made easy-offering lifestyle, location, and low-maintenance appeal in one exceptional package.

MORE DETAILS

Property ID	20H9GWZ
Property Type	Unit
Land Area	92 m2
Including	Air Conditioning Balcony Dishwasher Outdoor Entertaining Built-in-Robes Secure Parking Remote Garage Liveability

Danny Mailer 0439 710 862

Principal | danny@ljhookeredcliffe.com.au

Arib Khadgi 0401 545 155

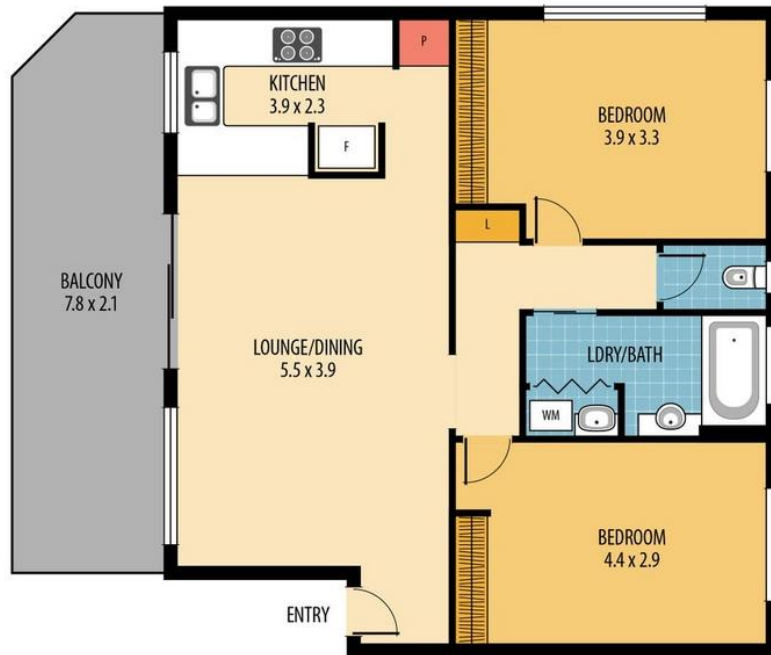
| arib@ljhookeredcliffe.com.au

LJ Hooker Redcliffe (07) 3897 5000

45 Redcliffe Parade, REDCLIFFE QLD 4020

redcliffe.ljhooker.com.au | reception@ljhookeredcliffe.com.au





Total area: 92m² (approx.)
 Internal area: 74m² (approx.)
 Outdoor area: 18m² (approx.)

4/2A VIEW ST, WOODY POINT

DISCLAIMER: ALL DIMENSIONS ARE AN APPROXIMATION ONLY AND NO GUARANTEE IS GIVEN WITH RESPECT TO ACCURACY.

