



Woodvale, 20 Plumdale Way

More Space for What Matters

5 2 2

For Sale
Offers From \$1,169,000

View
ljhooker.com.au/J6RHRD

Contact
Luke Calarese
0414 367 854
luke.calarese@ljhooker.com.au

Nestled opposite the beautiful Plumdale Park and Woodvale Nature Reserve, this 5-bedroom, 2-bathroom home invites you to embrace a lifestyle filled with peace and tranquillity. Wake up to the soothing sounds of nature and enjoy the perfect blend of country charm and suburban convenience. With a spacious alfresco area surrounded by low-maintenance greenery, this property is a peaceful retreat in the heart of Woodvale, offering space for the whole family while keeping you connected to nature.

Inside, you'll find an inviting and thoughtfully designed layout that caters to every lifestyle. All bedrooms are generously sized, complete with built-in robes, and the master suite provides a relaxing sanctuary. The kitchen impresses with expansive benchtops, ideal for hosting or creating culinary delights, while formal dining and two living areas ensure entertaining is effortless. Additional features include a single study nook under the staircase and a versatile activity room at the rear of the home. Both bathrooms include baths, offering ultimate comfort for the family. The home is also equipped with solar



LJ Hooker Joondalup
(08) 9300 2100

Disclaimer: All information contained therein is gathered from relevant third parties sources. We cannot guarantee or give any warranty about the information provided. Interested parties must rely solely on their own enquiries.

panels, making it energy-efficient and environmentally friendly.

Positioned directly across from Plumdale Park and the Woodvale Nature Reserve, this home offers a rare opportunity to enjoy nature at your doorstep. Explore nearby walking trails, or simply take in the calming views from your living room window. Families will love the convenience of having North Woodvale Primary School, Edgewater Primary School, Woodvale Primary School, and Woodvale Secondary College all within 2.0km of the property, making it a fantastic choice for those with school-aged children.

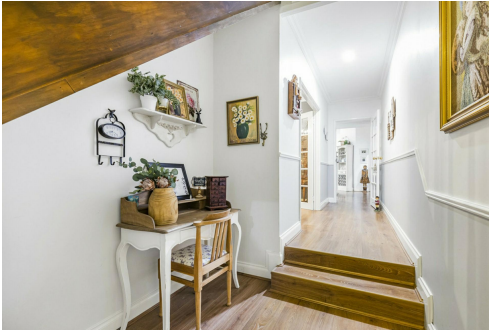
Conveniently located with easy access to the freeway, shopping centres, and other amenities, this property delivers an exceptional lifestyle with the perfect combination of tranquillity and accessibility.

More About this Property

Property ID	J6RHRD
Property Type	House
House Size	237 m²
Land Area	595 m²
Including	Ensuite Air Conditioning Toilets (2) Alarm Fire Place Outdoor Entertaining Workshop Built-in-Robes Secure Parking Liveability

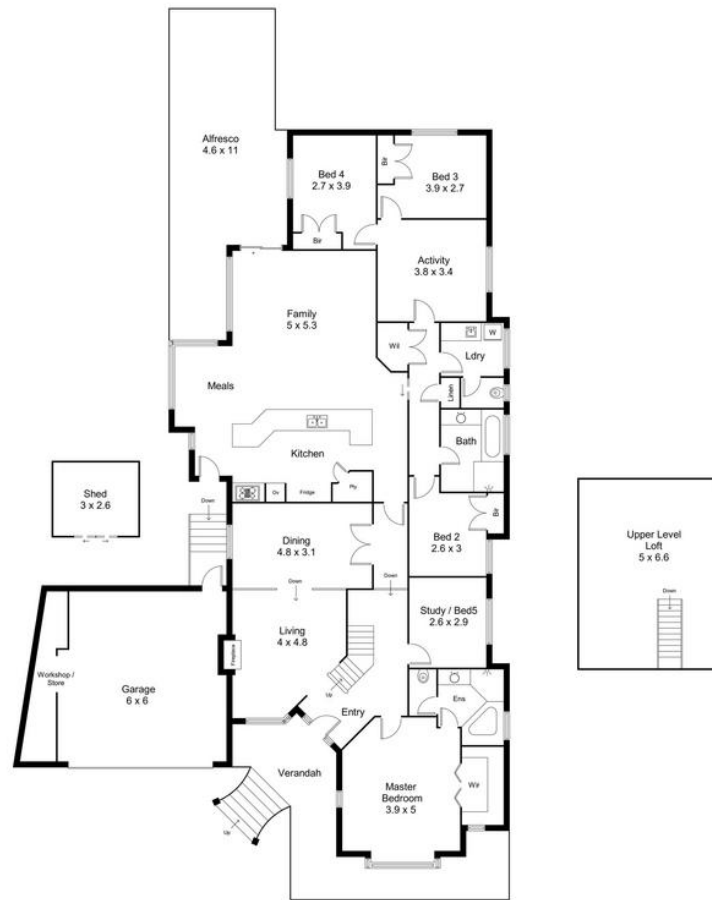
Luke Calarese 0414 367 854
Sales Representative | luke.calarese@ljhooker.com.au

LJ Hooker Joondalup (08) 9300 2100
4/25 Delage Street, JOONDALUP WA 6027
joondalup.ljhooker.com.au | admin.joondalup@ljhooker.com.au



Disclaimer: All information contained therein is gathered from relevant third parties sources. We cannot guarantee or give any warranty about the information provided. Interested parties must rely solely on their own enquiries.

LJ Hooker Joondalup
(08) 9300 2100



20 Plumdale Way, Woodvale

/ for information and guidance purpose only /
measurements shown are approximate



LJ Hooker Joondalup
(08) 9300 2100

Disclaimer: All information contained therein is gathered from relevant third parties sources.
We cannot guarantee or give any warranty about the information provided. Interested parties must rely solely on their own enquiries.