

Woodroffe, 8 Invar Court

Solid home on a full sized block

* Sold from our extensive data base prior to being advertised.

Located on a quiet court, this centrally located property sits between the Woolies Shopping center in Bakewell and the recently upgrade water park in Moulden. There are a number of schools within 200m which is perfect for young families. There is a car port for 2 cars and a full length patio at the rear which extends the living area and is perfect for entertaining.

Features include:

- * Fully fenced yard
- * Solid block construction
- * Small shed in the back yard
- * Under Cover



Disclaimer: All information contained therein is gathered from relevant third parties sources. We cannot guarantee or give any warranty about the information provided. Interested parties must rely solely on their own enquiries.

SOLD

3 

1 

2 

For Sale
\$505,000

View
ljhooker.com.au/5D93F2X

Contact
Jennifer Wardell
0447 007 474
jwardell@ljhookerdarwin.com.au

Robert Higgins
0418 184 754
rhiggins@ljhookerdarwin.com.au

LJ Hooker Darwin
(08) 8924 0900

- * Functional kitchen
- * Good sized patio for entertaining

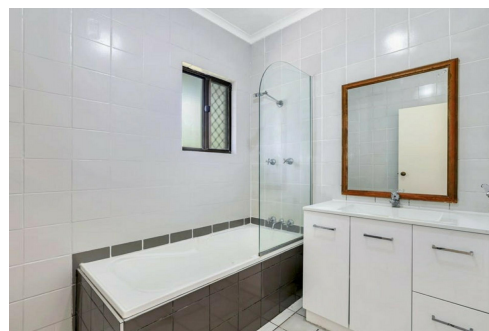
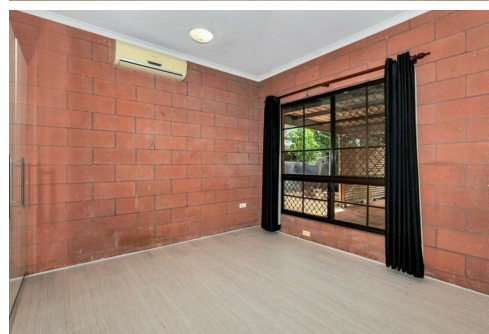
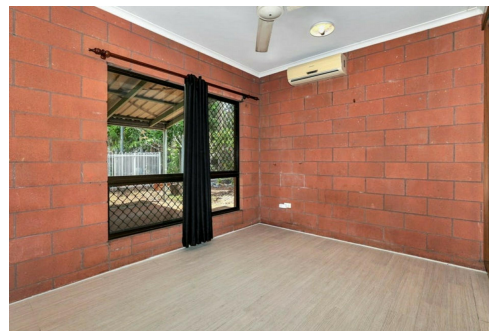
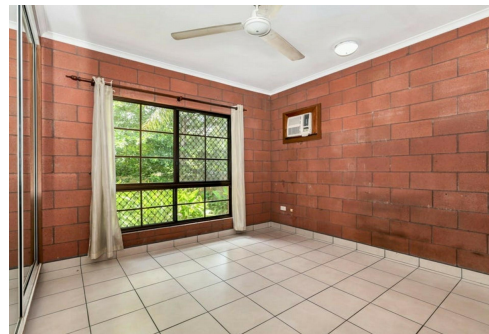
This is a great property for the budget conscious and is still loaded with features. Great for a first home buyer or a rock solid investment property.

More About this Property

Property ID	5D93F2X
Property Type	House
Including	Toilets (1)

Jennifer Wardell 0447 007 474
Sales Representative | jwardell@ljhookerdarwin.com.au
Robert Higgins 0418 184 754
Project Planning and Marketing | rhiggins@ljhookerdarwin.com.au

LJ Hooker Darwin (08) 8924 0900
Shop 1/25 Parap Road, PARAP NT 0820
darwin.ljhooker.com.au | reception@ljhookerdarwin.com.au



LJ Hooker Darwin
(08) 8924 0900

Disclaimer: All information contained therein is gathered from relevant third parties sources. We cannot guarantee or give any warranty about the information provided. Interested parties must rely solely on their own enquiries.

