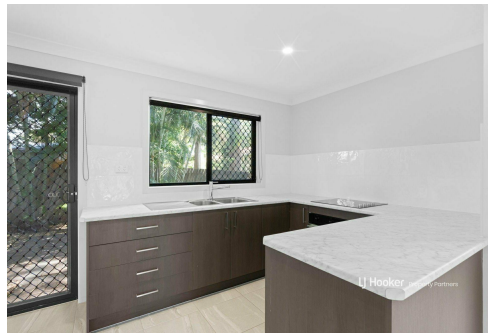
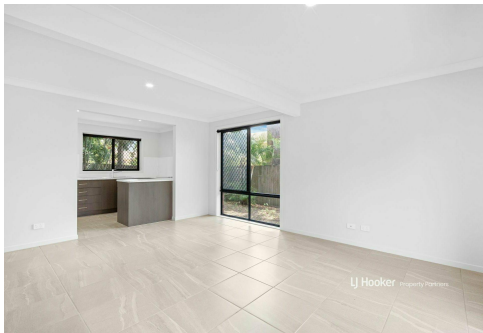




LJ Hooker Property Partners



Woodridge, 33/10 Damalis Street

SOLD BY EUGENE CAVANAGH & JONAS LEONG

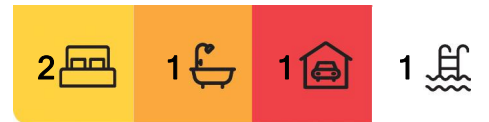
One of only 38 townhouses inside Damalis Court, a gated residential complex with a tempting communal pool and spa, this prize property has been renovated top to bottom - making it an exceptional proposition as a first-time home or sound investment acquisition.

Highlights:

- 2-level lay-out, combined living/dining & kitchen downstairs, 2 bedrooms + bathroom above
- Stunning new floor tiles downstairs and plush carpet through the bedrooms
- Swish kitchen fit-out with sleek bench tops, double sink, tiled splashbacks, electric mod cons
- Block out roller blinds throughout, energy-saving downlights, side access to rear courtyard
- Park, 7-11, bus stops just a short walk up the road, 5 min drive to Parklands Plaza, Bunnings



Disclaimer: All information contained therein is gathered from relevant third parties sources. We cannot guarantee or give any warranty about the information provided. Interested parties must rely solely on their own enquiries.



For Sale
Please Call

View
ljhooker.com.au/B2Q4F4R

Contact
Eugene Cavanagh
0432792299
eugeneecavanagh@ljhpp.com.au

Jonas Leong
040 716 6298
jonasleong@ljhpp.com.au

LJ Hooker Property Partners
07 3344 0288

- Positioned at the end of the quietest part of the complex and has one of the bigger backyards

Being completely vacant, the stylish renovation of this brick faced townhouse is on full display. On ground level, the whitewashed walls and ceilings contrast nicely against the neutral tones of the new large format floor tiles, which run from the open-plan living/dining area into a light-filled kitchen overlooking the private rear courtyard.

All new, the modern kitchen fit out offers generous bench space above dark cabinetry, a double sink with draining board and electric cooker/oven. The laundry and a handy downstairs powder room sit off to the side, with access to an open-air paved patio in the rear yard.

A solid timber staircase winds its way to the upper floor, newly carpeted in a durable hue and housing 2 bedrooms, both with built-in robes. The larger one overlooks the complex and boasts double the closet capacity; both share a refurbished self-contained bathroom with glass enclosed shower.

Out front, an open-sided single carport provides protected access into the house, and all residents get to enjoy the use of the complex's tempting inground swimming pool, complete with a side spa!

From the security of this gated estate, a short drive will get you to every amenity: zoned state schools, Trinder Park train station, Parklands Plaza (Foodworks), Bunnings, Officeworks, entry into scenic walks through Karawatha Forest, and the Pacific Motorway (M1) onramp.

Reap the rewards of another's efforts and make this your new home or next investment.

All information contained herein is gathered from sources we consider to be reliable. However, we cannot guarantee or give any warranty about the information provided and interested parties must solely rely on their own enquiries.

More About this Property

Property ID	B2Q4F4R
Property Type	Townhouse
Including	Toilets (1) Pool Courtyard Built-in-Robes

Eugene Cavanagh 0432792299

Sales Agent | eugeneavanagh@ljhpp.com.au

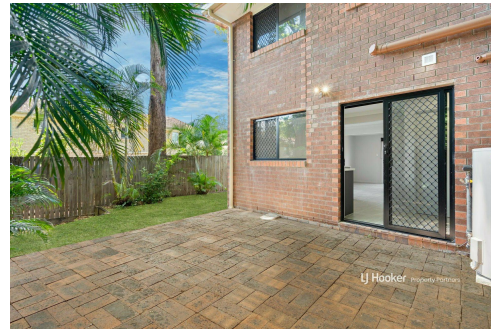
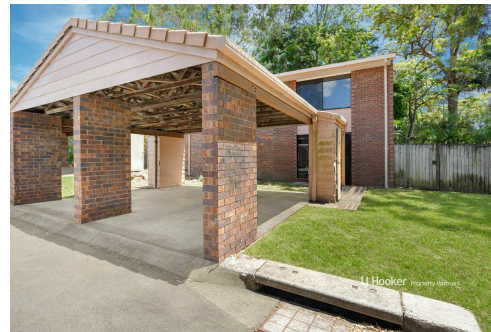
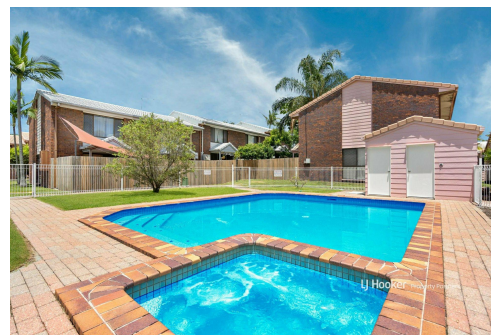
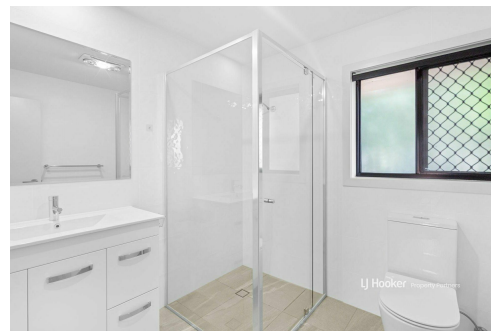
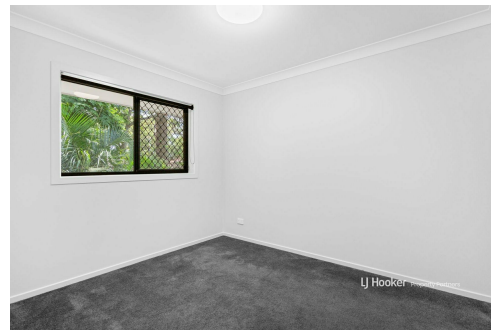
Jonas Leong 040 716 6298

Agent with Benjamin Leong | jonasleong@ljhpp.com.au

LJ Hooker Property Partners 07 3344 0288

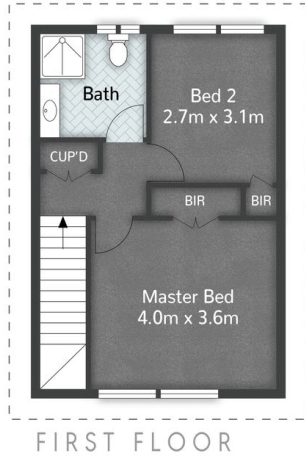
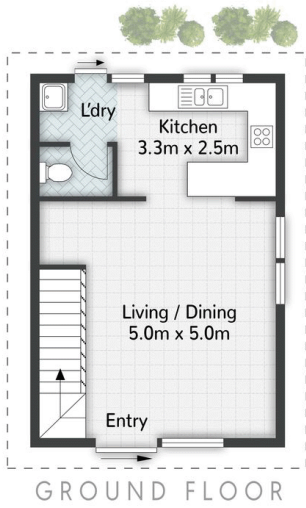
25 Pinelands Road, SUNNYBANK HILLS QLD 4109

propertypartners.ljhooker.com.au | sunnybankhills@ljhpp.com.au

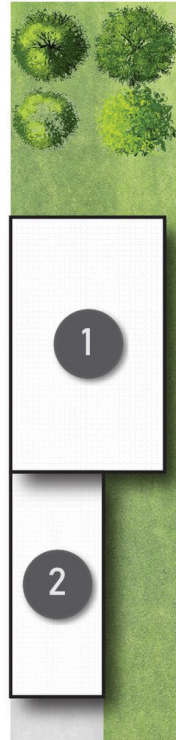


LJ Hooker Property Partners
07 3344 0288

Disclaimer: All information contained therein is gathered from relevant third parties sources. We cannot guarantee or give any warranty about the information provided. Interested parties must rely solely on their own enquiries.



(Not In Position)



SITE PLAN

LEGEND
1 RESIDENCE
2 CARPORT

Unit 33/10 Damalis Street **WOODRIDGE**

2 | 1 | 1 | 98m²

LJ Hooker Property Partners

All dimensions are approximate; they are subject to errors and inaccuracies and no liability will be accepted. Plans are shown for marketing purposes only.