



Woodlands, 7/3 Liege Street

Whopper Floorplan in Woodlands

PRIVATE VIEWINGS AVAILABLE.

Welcome to 7/3 Liege Street. This apartment is the biggest for living size in the entire development.

Stunning white marble effect floors as you enter a huge living and dining area. Ample size bedrooms, amazing storage, secure parking and located at the back of the building with a rooftop and green outlook.

Location is everything with Innaloo throughfare literally on your doorstep with restaurants, shops and a cinema but you wouldn't know as this apartment offers serenity at the back of the development.

Home buyers and investors alike, this one is a no brainer.

What we love:



Disclaimer: All information contained therein is gathered from relevant third parties sources. We cannot guarantee or give any warranty about the information provided. Interested parties must rely solely on their own enquiries.

SOLD



For Sale
From \$655,000

View
ljhooker.com.au/3SSHFGJ

Contact
Katie Lawley
0448 682 624
katie.lawley@ljhooker.com.au

LJ Hooker City Residential
(08) 9325 0700

- * Large 91sqm of living
- * Located at the rear - no road noise
- * Secure parking and visitor spots
- * Lovely outlook from balcony
- * Fantastic living size and floorplan
- * Beautifully finished with marble effect flooring
- * Double aspect master bedroom so heaps of natural light
- * Two large bedrooms
- * Two bathrooms
- * Gas cooktop

Be quick, this one won't last long

Rates:

Council - \$1,929.63 pa

Water - \$1,549.68 pa

Strata - \$1,002.50 p/qtr

More About this Property

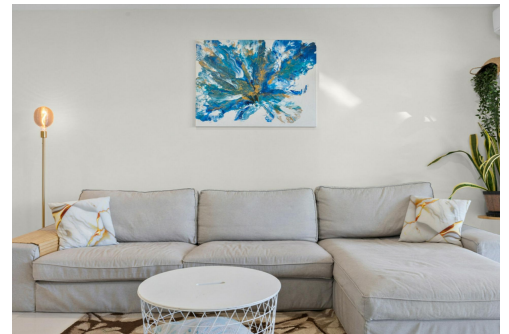
Property ID	3SSHFGJ
Property Type	Apartment
Including	Ensuite Air Conditioning Balcony Dishwasher Built-in-Robes Secure Parking

Katie Lawley 0448 682 624

Sales Executive | katie.lawley@ljhooker.com.au

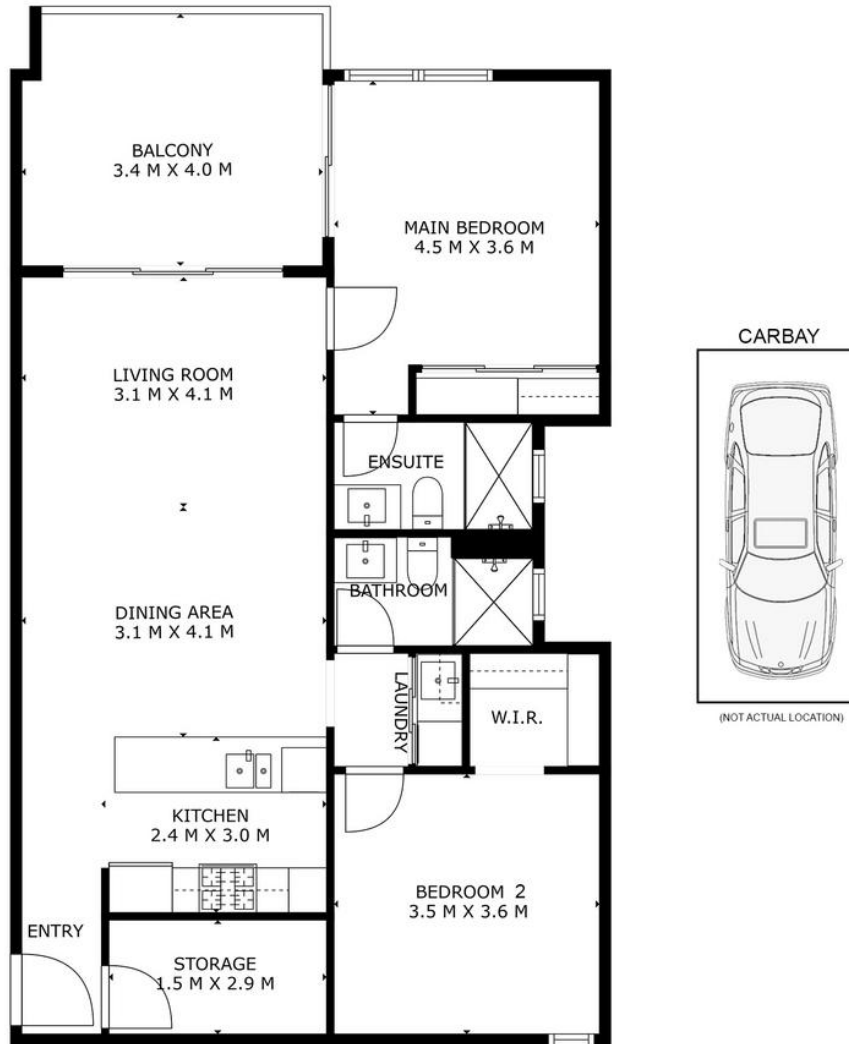
LJ Hooker City Residential (08) 9325 0700

Shop 30, 82 Royal Street, EAST PERTH WA 6004
cityresperth.ljhooker.com.au | hello@ljhpxp.com.au



LJ Hooker City Residential
(08) 9325 0700

Disclaimer: All information contained therein is gathered from relevant third parties sources. We cannot guarantee or give any warranty about the information provided. Interested parties must rely solely on their own enquiries.



<i>Approximate Areas</i>	
Internal Living	81m ²
Balcony	13m ²
Storage	4m ²
Total Lot Size	113m ²



7/3 Liege Street, Woodlands

This floor plan is for illustrative purposes only. While every effort has been made to provide an accurate representation, all measurements & other information are approximation only.
www.perthrealestaemedia.com www.cityresperth.ljhooker.com.au



LJ Hooker City Residential
(08) 9325 0700

Disclaimer: All information contained therein is gathered from relevant third parties sources.
We cannot guarantee or give any warranty about the information provided. Interested parties must rely solely on their own enquiries.