



7 Hellyar Drive, Wollongbar

A True Home

Located in a desired area of Wollongbar this open plan home with space, privacy and position, will be a delight to inspect. Easy care gardens enhance this immaculately property with a family friendly yard ideal for play or the keen gardener.

With only a short distance to the Wollongbar Village Centre, school & sporting fields plus a short drive to Alstonville and the convenience to Ballina/Byron Gateway airport and local beaches an inspection will impress.

Features

- 4 generous sized bedrooms with built-in-robos
- Master bedroom with en-suite, walk-in-robe & air-conditioning
- Well designed kitchen with dishwasher, pantry & storage
- The open plan kitchen, dining, family areas flow seamlessly with northerly aspect and abundance of light
- Generous lounge room
- Main bathroom with neutral tones / Large laundry with storage
- Sunny entertaining area with northerly aspect and privacy
- Double remote garage with internal access
- Solar panels / 2x Air-conditioners / Alarm System

This will impress ... don't miss this opportunity to purchase space, privacy, and location.

All information contained therein is gathered from relevant third parties sources. We cannot guarantee or give any warranty about the information provided. Interested parties must rely solely on their own enquiries.

4  2  2 

FOR SALE

\$1,090,000 - \$1,120,000

VIEW

Sat 27th Jun @ 12:00PM - 12:30PM

AGENTS

Vicki Heathwood
0432 247 264
vheathwood.alstonville@ljhooker.com.au

AGENCY

LJ Hooker Alstonville
(02) 6628 1163



Inspections are invited with Exclusive Agent, Vicki Heathwood.

MORE DETAILS

Property ID	16STF55
Property Type	House
Land Area	735 m2
Including	Ensuite
	Air Conditioning
	Dishwasher
	Outdoor Entertaining
	Built-in-Robes
	Fully Fenced
	Remote Garage
	Solar Panels

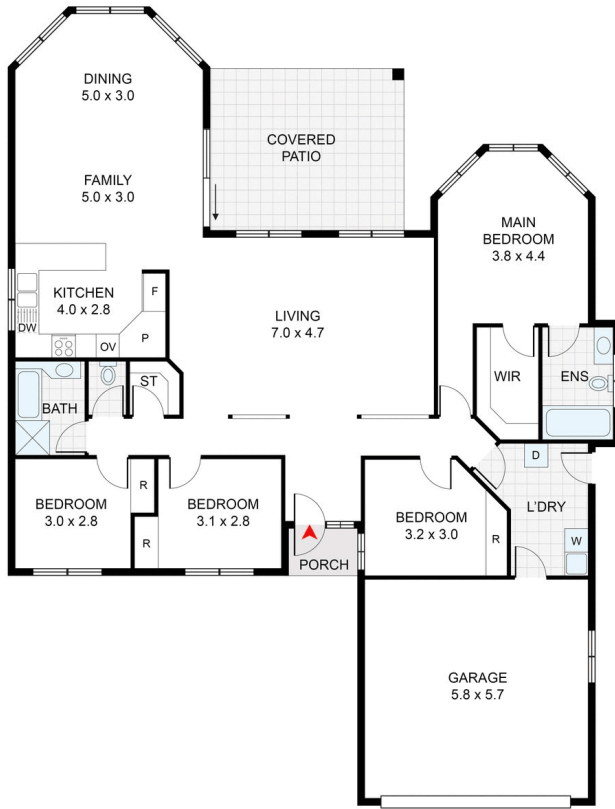
Vicki Heathwood 0432 247 264

Sales Consultant/Licensed Real Estate Agent |
vheathwood.alstonville@ljhooker.com.au

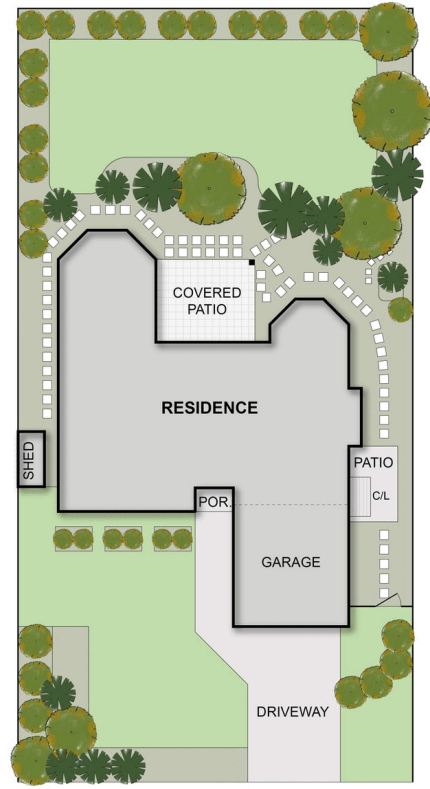
LJ Hooker Alstonville (02) 6628 1163

Shop 16 The Plaza, ALSTONVILLE NSW 2477
alstonville.ljhooker.com.au | alstonville@ljhooker.com.au





RESIDENCE : 193m²
(INCLUDES GARAGE)



HELLYAR DRIVE
SITE PLAN
(NOT TO SCALE)

APPROXIMATE AREAS	
INTERNAL FLOOR SPACE	- 160m ²
EXTERNAL FLOOR SPACE	- 23m ²
GARAGE	- 33m ²

7 Hellyar Drive, Wollongbar

Floor Plan Disclaimer: Media Drive (MD) floor plans / site plans are intended as an approximate guide only. No representations or warranties of any nature are given or intended and any person using this information other than as a guide should always rely on their own enquiries. Media Drive property marketing services / 041979054 / Photography, Floor plans, Video, Aerial photography / www.mediadrive.com.au



All information contained therein is gathered from relevant third parties sources. We cannot guarantee or give any warranty about the information provided. Interested parties must rely solely on their own enquiries.

