

1246 Bruxner Highway, Wollongbar

3  1  1 

Renovated Home with Scenic Farmland Views & Convenient Highway Access

Discover the perfect blend of country charm and commuter convenience in this beautifully renovated 3-bedroom, 1-bathroom home, nestled on a generous lot with sweeping views over open farmland.

Step inside to find a stylish, modern interior featuring updated flooring, fresh paint, and a character filled kitchen. The sunlit living room offers a welcoming atmosphere with access to the sunroom, perfect for relaxing or entertaining, while large windows frame picturesque rural views that change with the seasons.

Each of the three bedrooms is comfortably sized with ample storage, and the updated bathroom includes modern fixtures and finishes.

Outside, enjoy a spacious back deck ideal for outdoor dining or simply soaking in the peaceful surroundings. The easy to maintain gardens allow ample opportunity for the green thumb.

Located right next to the highway, this home offers unbeatable access for commuters, travelers, or anyone looking to stay connected while enjoying a tranquil, countryside setting.

Whether you're a first-time buyer, downsizing, or seeking an investment property, this home delivers comfort, charm, and

FOR SALE
Contact Agent

AGENTS

Tim Jeffery
0404 146 371
tjeffery.alstonville@ljhooker.com.au

AGENCY

LJ Hooker Alstonville
(02) 6628 1163

All information contained therein is gathered from relevant third parties sources.
We cannot guarantee or give any warranty about the information provided.
Interested parties must rely solely on their own enquiries.

 **LJ Hooker**

convenience.

Key Features:

- 3 bedrooms, 1 full bath
- Fully renovated interior
- Open farmland views
- Easy highway access
- Spacious lot with outdoor potential

Convenience is assured with the property being only 5.8km to Alstonville, 11.9km to Lismore and 22.7km to the Ballina Byron Gateway Airport.

Call or email exclusive agent Tim Jeffery today to organise your inspection.

MORE DETAILS

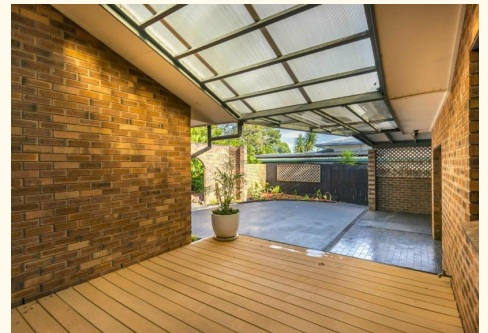
Property ID	16KAF55
Property Type	House
Land Area	715 m2
Including	Courtyard Deck Outdoor Entertaining Built-in-Robes Secure Parking Grey Water System

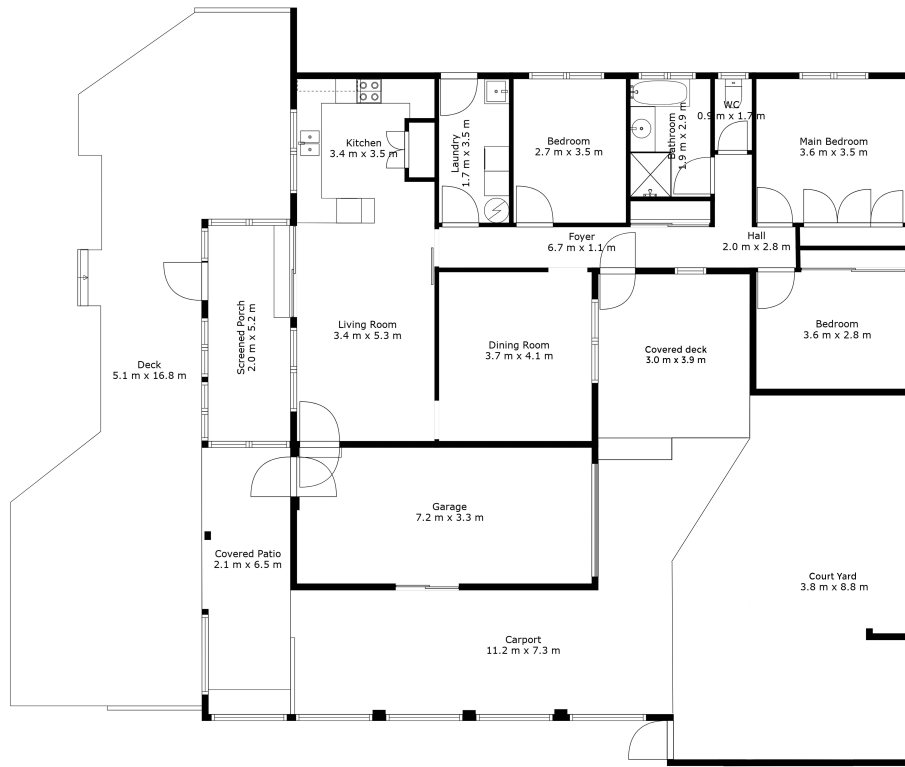
Tim Jeffery 0404 146 371

Associate Property Consultant | tjeffery.alstonville@ljhooker.com.au

LJ Hooker Alstonville (02) 6628 1163

Shop 16 The Plaza, ALSTONVILLE NSW 2477
alstonville.ljhooker.com.au | alstonville@ljhooker.com.au





1246 Bruxner Highway, Wollongbar

Disclaimer: For illustrative purpose only Floor plan measurements, size, and scale are approximate we take no responsibility for omission and errors.



All information contained therein is gathered from relevant third parties sources.
 We cannot guarantee or give any warranty about the information provided.
 Interested parties must rely solely on their own enquiries.

