



61/80 Coora Street, Wishart

## The Complete Catch: Comfort, Convenience, Catchment

Nestled within a beautifully maintained complex, this stylish townhouse offers the perfect balance of space, comfort, and low-maintenance living. Featuring contemporary interiors, a generous floorplan, and low body corp, reap the additional benefits of being only minutes away from all amenities within the sought-after Mansfield High catchment.

### Highlights:

- A modern, well-maintained 9-years-old two-storey townhouse
- Air-conditioned open plan living area, kitchen well-equipped with stone benchtops, stainless steel appliances, dishwasher, and walk-in pantry
- Spacious bedrooms with built-ins and climate control; master with ensuite plus convenient downstairs toilet
- Private, covered alfresco area in secure Parkside Wishart complex with low body corp and sparkling swimming pool
- Close to shops, buses, motorway and parks

Welcome to a home with a light-filled, open-plan living that connects seamlessly with the covered patio outside. The sleek kitchen is a home chef's dream, well-equipped with stone benchtops, premium appliances, and walk-in pantry.

All information contained therein is gathered from relevant third parties sources.  
We cannot guarantee or give any warranty about the information provided.  
Interested parties must rely solely on their own enquiries.

3 2 2

### FOR SALE

Please Call

### AGENTS

Erfan Babaie  
0481 868 871  
erfanbabaie@ljhpp.com.au

Kosma Comino  
0438 365 222  
kosmacomino@ljhpp.com.au

### AGENCY

LJ Hooker Property Partners  
07 3344 0288



Upstairs, you'll find three generous bedrooms, all with plush carpet underfoot and built-in robes while the master serves as a private retreat with its own ensuite. Don't miss out on the exclusive balcony connected to one of the bedrooms.

Beyond the front door is an enviable lifestyle. Jump into the communal pool, host friends at the entertaining pavilion, or relax in nature at Bulimba Creek's endless walkways and cycling tracks.

Zoned for the school well-regarded as some of Brisbane's best, this address puts you metres from bus stops, a public outdoor basketball court, off-leash dog park, and an easy stroll to Wishart Shopping Village.

Offering excellent storage, a remote garage, and 2nd exclusive car space on title, as well as plenty of visitors' parking, there is so much to love about this property. Inspect, fall in love and secure your future.

All information contained herein is gathered from sources we consider to be reliable. However, we cannot guarantee or give any warranty about the information provided and interested parties must solely rely on their own enquiries.

Desma Pty Ltd with Sunnybank Districts P/L T/A LJ Hooker Property Partners  
ABN 33 628 090 951 / 21 107 068 020

## MORE DETAILS

Property ID	B3XMF4R
Property Type	Townhouse
Land Area	141 m2
Including	Toilets (3)

### Erfan Babaie 0481 868 871

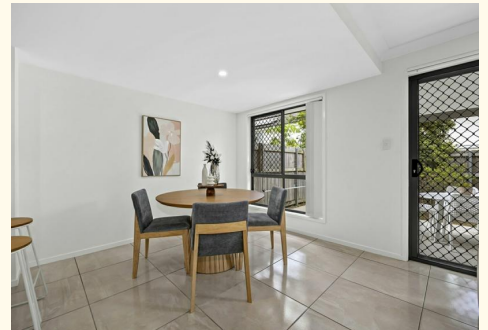
Executive Agent & Auctioneer | [erfanbabaie@ljhpp.com.au](mailto:erfanbabaie@ljhpp.com.au)

### Kosma Comino 0438 365 222

Partner & Agent/Independent Contractor |  
[kosmacomino@ljhpp.com.au](mailto:kosmacomino@ljhpp.com.au)

### LJ Hooker Property Partners 07 3344 0288

25 Pinelands Road, SUNNYBANK HILLS QLD 4109  
[propertypartners.ljhooker.com.au](http://propertypartners.ljhooker.com.au) | [sunnybankhills@ljhpp.com.au](mailto:sunnybankhills@ljhpp.com.au)










61/80 Coora Street  
WISHART

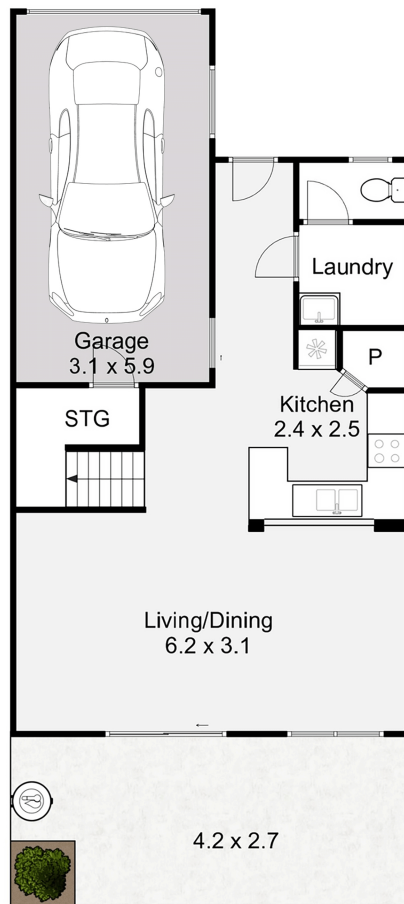
---

 3 Bed  
 2 Bath  
 1 Car

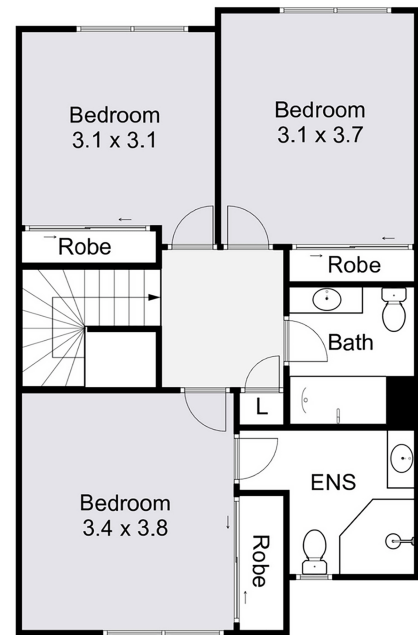
---

Internal : 124m<sup>2</sup>  
External : 17m<sup>2</sup>  
Total Area : 141m<sup>2</sup>

Disclaimer: This floorplan is strictly for illustrative purposes only. All measurements are approximate and buyers should make their own enquiries as to the accuracy of the information displayed herein. Floorings, colours, textures and items used are not indicative and are for visual display purposes only. No responsibility will be taken for any errors or omissions. Floorplan created by fastfocus.au



GROUND FLOOR



FIRST FLOOR