



76 Craig Street, Wishart

SOLD BY KOS COMINO & ERFAN BABAIE

This is the perfect address. Commanding an elevated and private position on the highly sought-after Craig Street, this architecturally designed, custom-built masterpiece delivers the perfect blend of modern luxury, and everyday family functionality. This is the ultimate forever-home for the discerning family, boasting a rare 5-bedroom layout, 4-car garaging, and resort-style amenities within the elite Mansfield State High and Wishart State School catchments.

At a glance:

- Guarantee your child's future with access to the elite Wishart/Mansfield school pipeline
- A rare and valuable configuration featuring 5 bedrooms and secure 4-car garaging, futureproofing your home and providing essential space for a large family, home office, and multiple vehicles
- Enjoy a life of leisure with the seamless flow of stacking doors opening to a large wrap-around deck, a sparkling in-ground pool, and an inside spa - your private, year-round retreat
- Enjoy bespoke architectural grandeur with high ceilings throughout and a full-height void entryway, creating an immediate feeling of luxury, plus unbeatable access to Westfield Garden City, M1/M3

5 🏠 2 🚗 4 🚗

FOR SALE

Please Call

AGENTS

Kosma Comino
0438 365 222
kosmacomino@ljhpp.com.au

Erfan Babaie
0481 868 871
erfanbabaie@ljhpp.com.au

AGENCY

LJ Hooker Property Partners
07 3344 0288

All information contained therein is gathered from relevant third parties sources.
We cannot guarantee or give any warranty about the information provided.
Interested parties must rely solely on their own enquiries.

 **LJ Hooker**

- motorways and essential bus links
- An 8-zone ducted air conditioning system for personalised climate control and solar panels for low energy costs, ensuring a comfortable, efficient, and stress-free lifestyle, Daikin 20kW air conditioning smart home system, including individual room on/off sensors.
- 5kW solar system
- Security cameras
- Ducted vacuum system
- All fixed TVs, including media room sound system and projector included in the sale
- Kitchen microwave and bosch dishwasher included in the sale
- NBN internet

Behind the striking facade and grand entryway, you'll discover generous open spaces filled with natural light, high ceilings, and modern finishes. The thoughtful floorplan has multiple living and entertaining zones across two levels, providing ample space for formal occasions and relaxed family life.

Downstairs, you'll find a formal lounge, a dedicated media room (complete with surround sound), and a massive open-plan dining area. For the home executive, the versatile study is perfectly positioned off the entry, serving flawlessly as the fifth bedroom or a discreet private office while a convenient powder room and toilet provide excellent service to the entire ground floor and entertaining areas.

The home's hub is the spectacular, wide-format kitchen where functionality meets form, anchored by a 4m Caesar stone breakfast bar, built to cater to any occasion. With a window overlooking the pool, a two-drawer dishwasher, a wine rack, your iced-water fridge, and integrated ducted vacuum system, every detail has been designed for effortless living.

Step outside through stacking doors create a breathtaking flow the seamlessly integrate the lounge and dining areas with the immense, covered wrap-around timber decking. This is an entertainer's dream, unsurpassed for hosting large gatherings and enjoying the elevated, private position of the property.

The established, landscaped gardens frame your private oasis: a sparkling in-ground pool. For private year-round luxury, retreat to the inside spa. Practical additions include a fully fenced yard, solar panels, and the rare advantage of a secure, remote-access 4-car garage ideal for multi-vehicle families.

Upstairs, the family room is a perfect breakout space for kids or casual relaxation. Here, you'll find three generous bedrooms, all featuring built-in robes and serviced by a pristine main bathroom.

Walk through double doors into an oversized master suite and an accompanying palatial ensuite and walk-in robe. Featuring a double vanity, dual shower heads and a corner spa bath invite you to unwind a long day.

This privileged address provides a peaceful, private enclave while remaining moments from essential amenities and transport links. You are minutes from the diverse shopping and dining options at Westfield Garden City, major bus terminals, quality parks, and enjoy direct, easy access to the M1 and M3, placing both the city and the coast within easy reach. This is a blue-chip, tightly held location that perfectly blends tranquility with ultimate convenience.

A custom-built home of this calibre, scale, and elite catchment

position is a finite opportunity in Wishart. Contact Kosmo Comino today to step into your new family haven.

All information contained herein is gathered from sources we consider to be reliable. However, we cannot guarantee or give any warranty about the information provided and interested parties must solely rely on their own enquiries.

Desma Pty Ltd with Sunnybank Districts P/L T/A LJ Hooker Property Partners
ABN 33 628 090 951 / 21 107 068 020

MORE DETAILS




Property ID	B3M8F4R
Property Type	House
Land Area	714 m2
Including	Ensuite
	Air Conditioning
	Ducted Cooling
	Ducted Heating
	Toilets (3)
	Pool
	Spa
	Dishwasher
	Outdoor Entertaining
	Built-in-Robes
	Secure Parking
	Fully Fenced
	Remote Garage
	Solar Panels

Kosma Comino 0438 365 222
Partner & Agent/Independent Contractor |
kosmacomino@ljhpp.com.au
Erfan Babaie 0481 868 871
Executive Agent & Auctioneer | erfanbabaie@ljhpp.com.au

LJ Hooker Property Partners 07 3344 0288
25 Pinelands Road, SUNNYBANK HILLS QLD 4109
propertypartners.ljhooker.com.au | sunnybankhills@ljhpp.com.au



76 Craig Street
WISHART

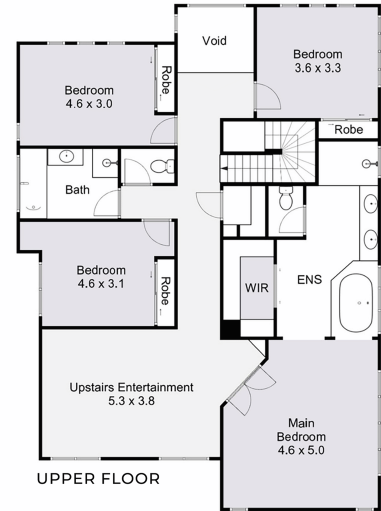
-  5 Bed
-  2.5 Bath
-  4 Car

Total Area : 410m²

Disclaimer: This floorplan is strictly for illustrative purposes only. All measurements are approximate and buyers should make their own enquiries as to the accuracy of the information displayed herein. Floorings, colours, textures and items used are not indicative and are for visual display purposes only. No responsibility will be taken for any errors or omissions. Floorplan created by fastfocus.au



LOWER FLOOR



UPPER FLOOR