

30 Anise Street, Wishart

## SOLD BY KOS COMINO & ERFAN BABAIE

Set high in a prestigious Wishart pocket, this immense brick double-storey family residence has been fully transformed with a sleek, modern renovation. A true statement of space and sophistication, it blends cutting-edge smart home technology with timeless style and sprawling living zones. With Google Home Assistant automating lights, air conditioning and garage access right from your phone, plus dimmable ambient lighting in key spaces, convenience and comfort are at your command. A high-end digital surveillance system and 10.5 kW solar array add both security and sustainability, while multiple living and entertaining areas - including a magical outdoor deck beneath a vine-cloaked trellis - create a lifestyle of ease and indulgence. All of this is set within the coveted Wishart Primary and Mansfield High catchments, moments from shops, buses, parks and major motorways.

### Key Highlights:

- Elevated double-storey family home, renovated for a sleek, contemporary finish
- Smart Google Home Assistant controls for lighting, air conditioning, and garage, with dimmable ambient settings in select rooms

All information contained therein is gathered from relevant third parties sources. We cannot guarantee or give any warranty about the information provided. Interested parties must rely solely on their own enquiries.

4 🏠 2 🚗 2 🚗

### FOR SALE

Please Call

### AGENTS

Kosma Comino  
0438 365 222  
kosmacomino@ljhpp.com.au

Erfan Babaie  
0481 868 871  
erfanbabaie@ljhpp.com.au

### AGENCY

LJ Hooker Property Partners  
07 3344 0288



- Remote-accessible surveillance system plus 10.5 kW solar powering the entire home
- Expansive floorplan with multiple formal and casual living areas, plus whimsical deck retreat with vine-laden trellis
- Prestigious Wishart Primary and Mansfield High catchments, near shops, parks, buses and major motorways

Families will relish this leafy, family-friendly pocket that promises both serenity and accessibility. Only metres from buses, childcare, schools and local shops, daily life is effortlessly convenient. Westfield Mt Gravatt is just a short drive away for endless weekend leisure, shopping and dining, while surrounding parks provide green escapes for play and relaxation. It's the perfect balance of suburban calm and city connectivity.

- 200 m to bus stop
- 750 m to Goodstart Early Learning Wishart
- 800 m to Pindari Crescent Park
- 1.1 km to Wishart State School
- 1.3 km to Wishart Shopping Village
- 1.6 km to Mansfield State High School
- 2.1 km to Westfield Mt Gravatt

Positioned on a quiet, leafy street, this soaring brick double-storey home presents in flawless condition. Flourishing, retained gardens cascade beside the wide driveway, which leads to a double garage. A set of steps ascends to the illuminated entry, where the home's contemporary transformation is immediately revealed.

The entire residence has been reimagined for the future. With Google Home Assistant managing lighting, climate and garage access, you're assured of seamless modern living. Dimmable lights in key zones set the perfect mood, while a high-tech surveillance system ensures peace of mind--all powered by a robust 10.5 kW solar system.

Beyond the smart technology, the home sprawls across refined living areas with marble-look flooring and chic downlights. The entry foyer flows into a vast formal lounge and dining area, ideal for sophisticated hosting, before opening onto an expansive air-conditioned family dining space and separate family lounge for relaxed everyday living.

The heart of the home is its glamorous chef's kitchen. Showcasing marble-look waterfall stone benchtops and a large island with dining bar, it is as elegant as it is functional. A matte-black gooseneck mixer, quality gas stove, dishwasher, endless cabinetry, and a walk-in pantry complete this chic culinary haven.

Outdoors, the fully fenced, low-maintenance yard is framed by retained gardens. In one corner awaits a whimsical timber deck crowned by a vine-laden trellis--a magical setting for alfresco entertaining. Dine under festoon lights with a glass of wine, or enjoy sunny brunches to the soundtrack of birdsong.

Upstairs, four plush carpeted bedrooms each include ceiling fans and built-in robes, with three further enhanced by air conditioning. The master suite boasts its own immaculate ensuite with frameless rainfall shower, while a pristine family bathroom features both a bathtub and rainfall shower, alongside a separate water closet for added convenience.

#### Additional Features:

- Gas hot water system
- Under-stairs storage
- Internal laundry with stunning floor-to-ceiling tiling

Perfectly blending modern sophistication, spacious design and

whimsical outdoor charm, this remarkable Wishart residence delivers a family lifestyle of security, elegance and endless possibility. Contact Kosma Comino and Erfan Babaie today to discover how you can make this exceptional home yours.

All information contained herein is gathered from sources we consider to be reliable. However, we cannot guarantee or give any warranty about the information provided and interested parties must solely rely on their own enquiries.

Desma Pty Ltd with Sunnybank Districts P/L T/A LJ Hooker Property Partners  
ABN 33 628 090 951 / 21 107 068 020

## MORE DETAILS

Property ID	B3GVF4R
Property Type	House
Land Area	610 m2
Including	Ensuite
	Air Conditioning
	Toilets (3)
	Dishwasher
	Outdoor Entertaining
	Built-in-Robes
	Fully Fenced
	Remote Garage

### Kosma Comino 0438 365 222

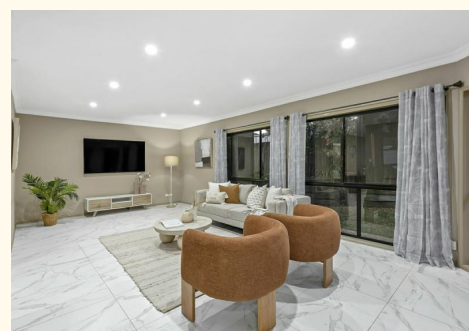
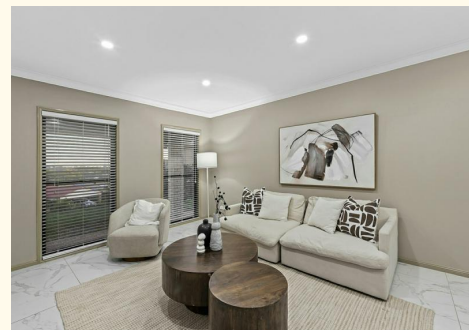
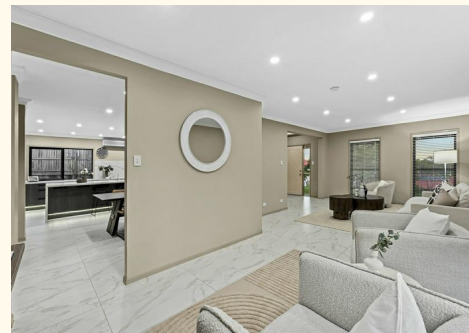
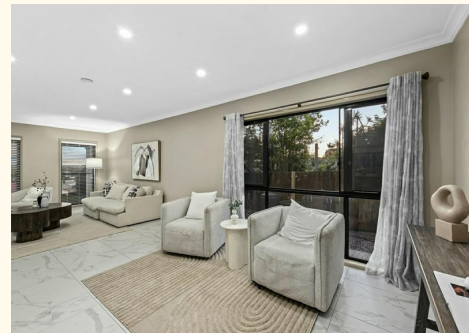
Partner & Agent/Independent Contractor |  
kosmacomino@ljhpp.com.au

### Erfan Babaie 0481 868 871

Executive Agent & Auctioneer | erfanbabaie@ljhpp.com.au

### LJ Hooker Property Partners 07 3344 0288

25 Pinelands Road, SUNNYBANK HILLS QLD 4109  
propertypartners.ljhooker.com.au | sunnybankhills@ljhpp.com.au





30 Anise Street  
**WISHART**



4 Bed

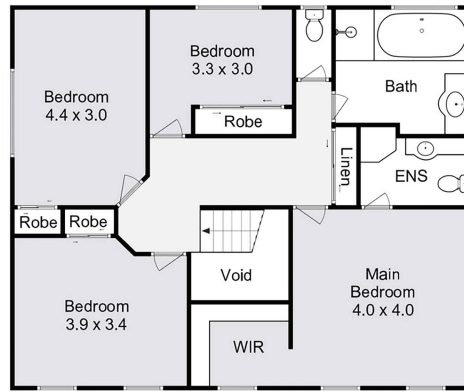


2 Bath

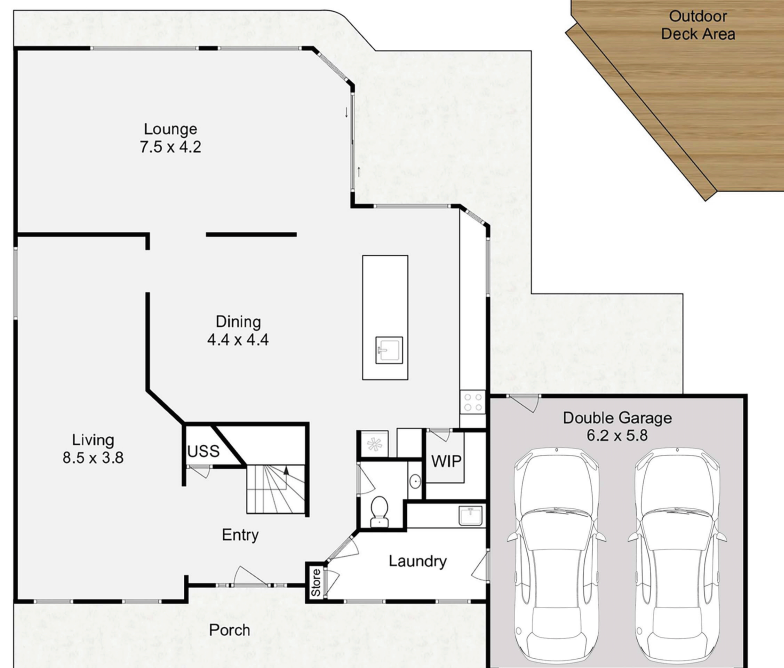


2 Car

Disclaimer: This floorplan is strictly for illustrative purposes only. All measurements are approximate and buyers should make their own enquiries as to the accuracy of the information displayed herein. Floorings, colours, textures and items used are not indicative and are for visual display purposes only. No responsibility will be taken for any errors or omissions. Floorplan created by fastfocus.au



FIRST FLOOR



GROUND FLOOR