



7 Telluride Drive, Winter Valley

## Where Comfort & Space Come Together

Located in the growing and family-friendly suburb of Winter Valley, this beautifully presented home offers modern comfort, practical design close to schools, shopping, parklands and public transport.

Inside, the home features a light-filled open-plan living and dining area complemented by a stylish kitchen complete with stone bench tops, stainless steel appliances, ample storage and a large island bench perfect for everyday living. Separate lounge room to accommodate the whole family.

Offering four generous bedrooms, master includes a walk-in robe and ensuite, while the remaining bedrooms are serviced by a modern central bathroom. Ducted heating and split system cooling provide year-round comfort.

Outside, an undercover alfresco overlooks the spacious backyard, creating the perfect setting for entertaining or relaxing with family and friends. Complete with a double garage and modern finishes throughout, this is an opportunity not to be missed. Contact Zoe Crooks on 0426 796 001 or Daniel Mammone on 0426 467 803 to secure your new home today!

4  2  2 

**FOR SALE**  
Contact Agent

**VIEW**  
Sat 23rd May @ 10:30AM - 11:00AM

**AGENTS**  
Zoe Crooks  
0426 796 001  
zoe.crooks@ljhmelton.com.au

Daniel Mammone  
0426 467 803  
daniel.mammone@ljhmelton.com.au

**AGENCY**  
LJ Hooker Melton  
(03) 8797 5588

All information contained therein is gathered from relevant third parties sources.  
We cannot guarantee or give any warranty about the information provided.  
Interested parties must rely solely on their own enquiries.

 **LJ Hooker**

PHOTO ID IS REQUIRED ON ALL INSPECTIONS

DISCLAIMER: All stated dimensions are approximate only. Particulars given are for general information only and do not constitute any representation on the part of the vendor or agent.

Please see the below link for an up-to-date copy of the Due Diligence Checklist: <http://www.consumer.vic.gov.au/duediligencechecklist>

## MORE DETAILS

Property ID	RXTHWU
Property Type	House
Land Area	664 m2

### Zoe Crooks 0426 796 001

Sales Director | [zoe.crooks@ljhmelton.com.au](mailto:zoe.crooks@ljhmelton.com.au)

### Daniel Mammone 0426 467 803

Sales Executive | [daniel.mammone@ljhmelton.com.au](mailto:daniel.mammone@ljhmelton.com.au)

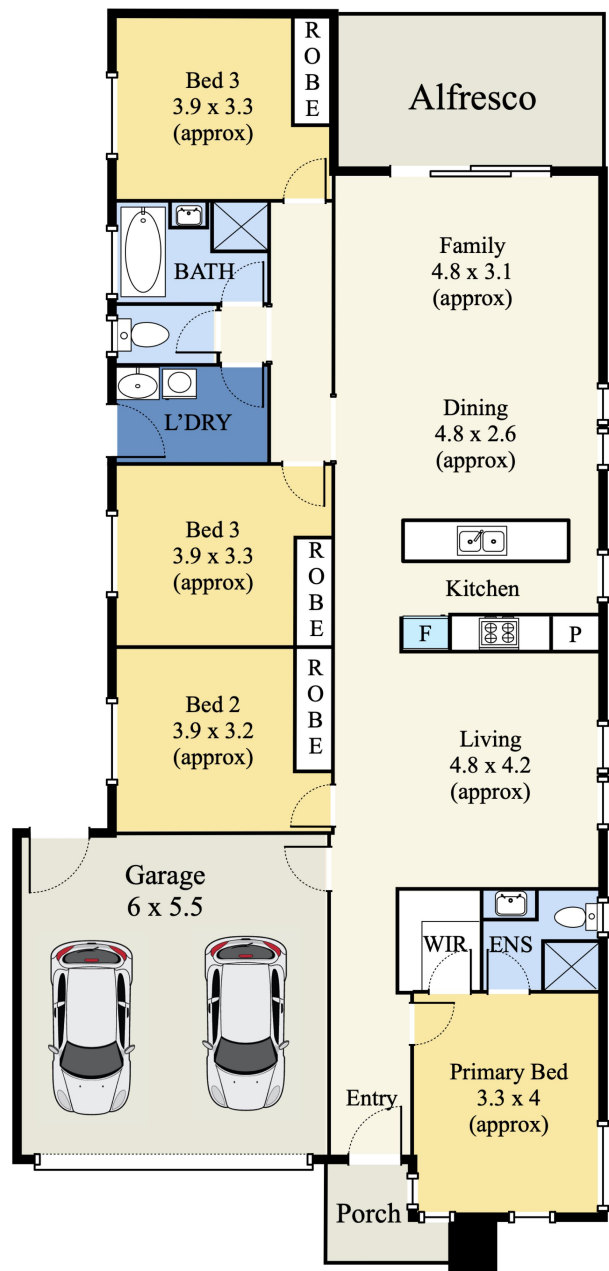
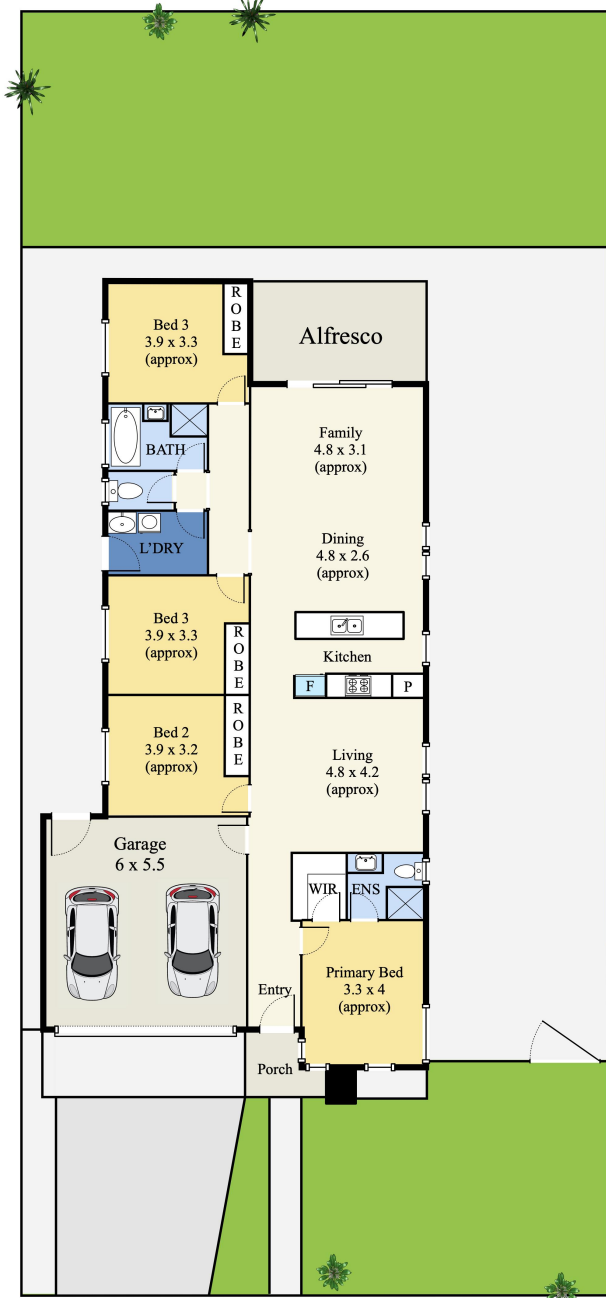
### LJ Hooker Melton (03) 8797 5588

307 High Street, MELTON VIC 3337

[melton.ljhooker.com.au](http://melton.ljhooker.com.au) | [admin@ljhmelton.com.au](mailto:admin@ljhmelton.com.au)



# Floor Plan



## 7 Telluride Dr, Winter Valley VIC 3358

\*This floorplan is for illustration purposes only and no warranty is given to its accuracy. Purchasers are advised to carry out their own investigations. All the Dimensions are approximately.