



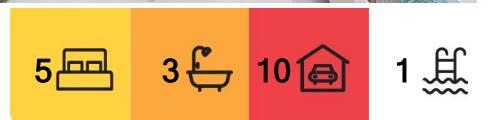
Windella, 11 Lomandra Place

Luxurious Homestead in the Heart of the Hunter Valley

Nestled in the picturesque countryside of Windella, 11 Lomandra Place offers an extraordinary opportunity to embrace luxury rural living, just minutes from the Hunter Valley's world-renowned vineyards, acclaimed restaurants, and boutique shopping. Situated on an expansive 5,748m² of premium land, this breathtaking homestead delivers the perfect balance of tranquillity and convenience, with Maitland CBD only 15 minutes away.

From the moment you arrive, the landscaped gardens and striking facade set the tone for the elegance that awaits inside. Designed for sophisticated family living, this exceptional home boasts ducted air-conditioning, plantation shutters, and a seamless combination of large-format tiles and plush carpeting throughout.

The home features five generously sized bedrooms, each with ceiling fans, built-in storage, and ducted air-conditioning. The master suite is a true retreat, complete with an opulent



For Sale
\$1.9M to \$2M

View
ljhooker.com.au/1DWFF6H

Contact
Todd Fisher
0438 592 920
tfisher.maitland@ljhooker.com.au

Ben Cotton
0434 638 822
bcotton.maitland@ljhooker.com.au



LJ Hooker Maitland
(02) 4933 5511

Disclaimer: All information contained therein is gathered from relevant third parties sources. We cannot guarantee or give any warranty about the information provided. Interested parties must rely solely on their own enquiries.

walk-in robe and a luxurious ensuite. Three additional designer bathrooms showcase sleek floating vanities and high-end finishes, adding to the home's modern appeal.

At the heart of the residence lies the stunning open-plan living area, where the gourmet chef's kitchen takes centre stage. With a central island, breakfast bar, elegant pendant lighting, a walk-in pantry, and premium appliances, this kitchen is as functional as it is beautiful. The thoughtfully designed floor plan also includes multiple living zones, a games room, and dedicated study areas, ensuring space for every family member's needs.

Designed for year-round entertaining, the expansive outdoor area is a showstopper, featuring a sparkling self cleaning pool, a built-in outdoor kitchen, ceiling fans, and roller blinds-perfect for hosting guests or simply unwinding in style.

Adding to the home's impressive features is a huge barn-style garage with huge side access driveway and ample space for six vehicles, making this property a dream for car enthusiasts or those in need of extra storage.

A rare gem in a coveted location, 11 Lomandra Place, Windella, is where luxurious living meets rural tranquillity-an unparalleled lifestyle opportunity in the heart of the Hunter Valley.

Proudly marketed by LJ Hooker Maitland, please call exclusive agents Todd Fisher 0438 592 920 or Ben Cotton 0434 638 822 - 7 days for all inspections & further information.

All information contained herein is gathered from sources we deem to be reliable. However, we cannot guarantee its accuracy and interested persons should rely on their own enquiries.



LJ Hooker Maitland
(02) 4933 5511

Disclaimer: All information contained therein is gathered from relevant third parties sources. We cannot guarantee or give any warranty about the information provided. Interested parties must rely solely on their own enquiries.

More About this Property

Property ID	1DWFF6H
Property Type	House
Land Area	5748 m2
Including	Ensuite Study Air Conditioning Toilets (3) Pool Built-in-Robes Area Views Close to Schools Close to Shops Close to Transport Liveability Pool Prestige Homes

Todd Fisher 0438 592 920

Principal/Licensee in Charge | tfisher.maitland@ljhooker.com.au

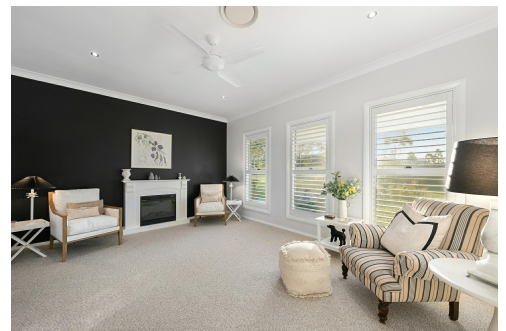
Ben Cotton 0434 638 822

Licensed Real Estate Agent & Auctioneer | bcotton.maitland@ljhooker.com.au

LJ Hooker Maitland (02) 4933 5511

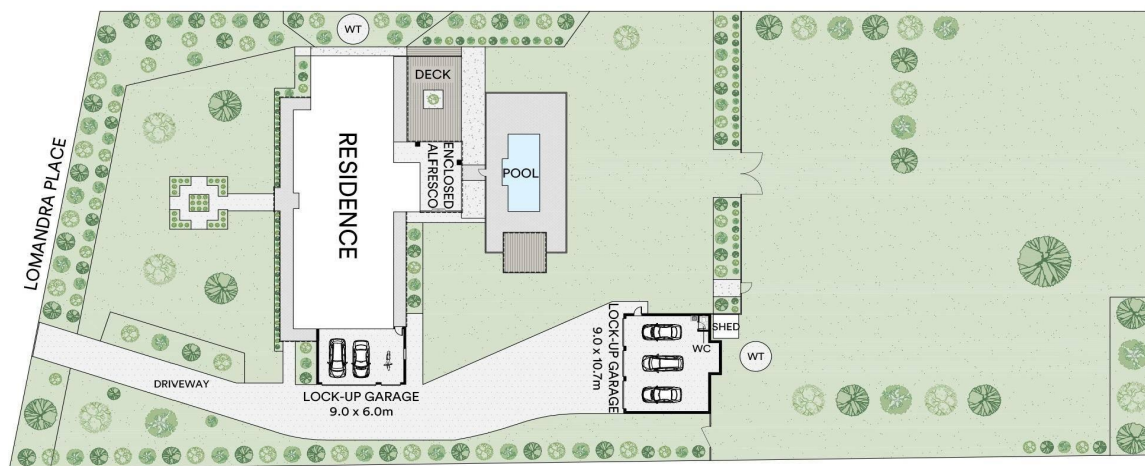
24 Ken Tubman Drive, MAITLAND NSW 2320

maitland.ljhooker.com.au | maitland@ljhooker.com.au



LJ Hooker Maitland
(02) 4933 5511

Disclaimer: All information contained therein is gathered from relevant third parties sources. We cannot guarantee or give any warranty about the information provided. Interested parties must rely solely on their own enquiries.



All information contained in this document is from sources we believe to be accurate, however we cannot guarantee its accuracy. Interested persons should make and rely on their own enquiries in relation to measurements, dimensions, layout, furniture and descriptions.