


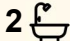
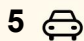
6 Drewery Street, Wilsonton

Spacious Family Living with Ultimate Shed & Entertaining Appeal

Welcome to 6 Drewery Street, Wilsonton —a feature-packed family home offering exceptional space, comfort, and versatility on a fully fenced 840m² allotment.

Renovated from top to bottom, this solid brick construction is designed for practical family living, this impressive residence boasts four generous bedrooms, two bathrooms, and an abundance of vehicle accommodation with a double lock-up garage featuring drive-through access to a substantial three-bay shed. Whether you're a tradesperson, car enthusiast, or simply need extra storage space, this property delivers in spades.

Inside, the home offers multiple living zones to suit every lifestyle. Enjoy movie nights in the dedicated home theatre room, which can also serve as a fourth bedroom, while the air-conditioned man cave provides the perfect retreat for hobbies, entertaining, or relaxing in comfort. Ceiling fans are installed throughout the home, complemented by blackout shutters in the bedrooms for enhanced privacy and year-round comfort.

4  2  5 

FOR SALE

Offers to Purchase

VIEW

By Appointment

AGENTS

Ben Barrowclift
0401 369 201
bbarrowclift@ljht.com.au

AGENCY

LJ Hooker Toowoomba
(07) 4688 2222

All information contained therein is gathered from relevant third parties sources. We cannot guarantee or give any warranty about the information provided. Interested parties must rely solely on their own enquiries.



Step outside and discover the expansive covered outdoor entertaining area —the ideal setting for family gatherings, weekend barbecues, or simply enjoying the outdoors while overlooking the secure backyard.

Additional features include:

- 4 spacious bedrooms
- 2 well-appointed bathrooms
- Double lock-up garage with drive-through access
- " Large 3-bay shed with mezzanine floor
- " Fully fenced 840m² block
- Electric front gate for added security and convenience
- Solar power system to help reduce energy costs
- 2.5kw air conditioning unit in Master Bedroom
- 6.6kw air conditioning unit in lounge room
- New hot water system
- Gutter guard installed throughout the house and shed
- conditioned man cave
- Dedicated home theatre room / fourth bedroom option
- Ceiling fans throughout
- Blackout shutters to bedrooms
- Rainwater tanks at the rear of the property
- Large covered outdoor entertaining area

Offering an outstanding combination of space, functionality, and lifestyle features, this well-maintained property presents an exceptional opportunity for families, hobbyists, and those seeking extra room for vehicles, caravans, boats, or workshop space.

Don't miss your chance to secure this feature-packed Wilstonon property.

MORE DETAILS

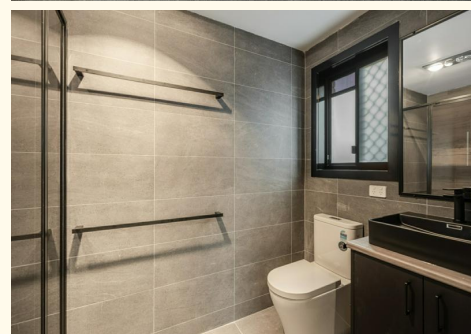
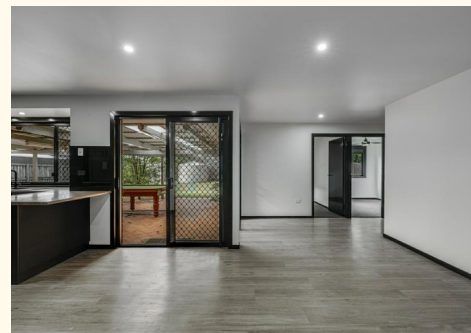
Property ID	203SF4W
Property Type	House
Land Area	840 m2

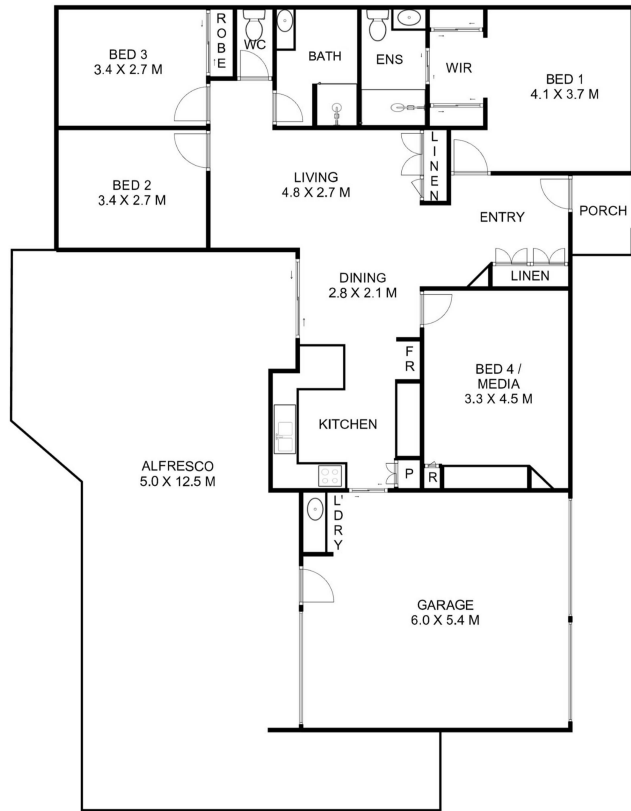
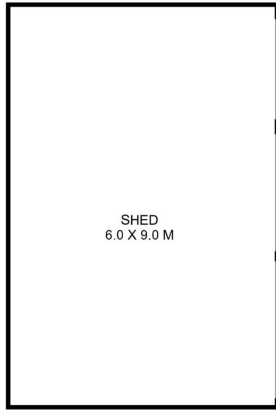
Ben Barrowclift 0401 369 201

Residential Sales Executive | bbarrowclift@ljht.com.au

LJ Hooker Toowoomba (07) 4688 2222

Level 1, 677-683 Ruthven Street, TOOWOOMBA QLD 4350
toowoomba.ljhooker.com.au | toowoomba@ljht.com.au





LJ Hooker 6 Drewery Street, Wilsonton

This plan is for representational purposes only. All dimensions displayed are approximate and shouldn't be solely relied upon. Do not edit, reproduce, copy, modify, crop or in any way exploit copyright to Statik Illusions. More info : statikillusions.com/usage-rights/

Internal 147m² External 126m² Total 273m²



All information contained therein is gathered from relevant third parties sources. We cannot guarantee or give any warranty about the information provided. Interested parties must rely solely on their own enquiries.