



27 Tomkinson Street, Wilsonton

Warmth, Space & Everyday Ease

Some homes feel practical. Others leave a lasting impression. 27 Tomkinson Street brings the two together with warmth, flexibility and understated appeal.

Behind its well-kept rendered facade, the home opens into a surprisingly generous floorplan with multiple living zones, a dedicated office, sunroom and a welcoming main living area complete with built-in bar. Each space has its own purpose, creating a home that feels comfortable, versatile and easy to enjoy.

The layout lends itself to a relaxed way of living. Quiet mornings can be enjoyed from the rear sunroom, afternoons can flow out to the covered entertaining area, and weekends can be spent making use of the powered shed, easy-maintenance backyard and additional multipurpose space.

Set on a fully fenced 602sqm* corner allotment, this is a home with the kind of space, function and character that makes everyday living feel considered.

Inside:

- Three-bedroom rendered brick home
- Dedicated office/study with built-in desk

All information contained therein is gathered from relevant third parties sources. We cannot guarantee or give any warranty about the information provided. Interested parties must rely solely on their own enquiries.

3 1 4

FOR SALE

Offers over \$799,000

VIEW

Sat 13th Jun @ 10:15AM - 10:45AM

AGENTS

Josh Williams
0437 858 571
jwilliams@ljht.com.au

AGENCY

LJ Hooker Toowoomba
(07) 4688 2222



- Multiple living areas
- Built-in bar to main living area
- Spacious multipurpose room, ideal as a rumpus room, games room, home gym or hobby space
- Sunroom overlooking the easy-maintenance backyard
- Air-conditioned living and dining area
- Air-conditioned main bedroom
- Kitchen with adjoining dining area
- Separate laundry
- Bathroom with separate toilet
- Tiled main living areas
- Carpeted bedrooms

Outside:

- Covered outdoor entertaining area
- Powered double shed
- Extra-long garage/workshop space with side roller door access
- Double carport
- Fully fenced 602sqm* corner allotment
- Extensive paved outdoor areas for low-maintenance living
- Easy-maintenance backyard
- Established hedged front garden
- Two rainwater tanks for garden use
- Clothesline positioned at the rear

Additional Features:

- 5kW solar system
- Rendered brick construction
- Low-maintenance outdoor areas
- Flexible floorplan with multiple living options
- Furniture may be available by negotiation

Location:

- Within the Wilsonton State School and Wilsonton State High School catchments
- Approximately 1km* to Wilsonton Shopping Centre, including Coles, Woolworths, medical services, post office and specialty stores
- Less than 1km* to Captain Cook Park, featuring sporting ovals, skate park and BMX facilities
- Approximately 4km* to the Baillie Henderson health precinct and future New Toowoomba Hospital site
- Approximately 5km* to the Toowoomba CBD

The future New Toowoomba Hospital at the Baillie Henderson campus represents a major regional health infrastructure project for the Darling Downs, further adding to the long-term convenience and growth of the surrounding area.

- Approximate.

Contact Josh on 0437 858 571 today to arrange your inspection or find out more.

MORE DETAILS

Property ID 202XF4W
Property Type House
House Size 169 m2
Land Area 602 m2
Including Study
Air Conditioning
Built-in-Robes
Car Parking - Surface
Carpeted
Close to Schools
Close to Shops
Close to Transport

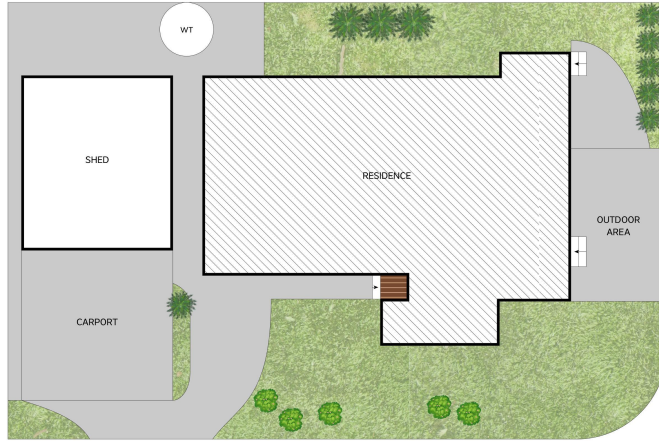
Josh Williams 0437 858 571

Residential Sales Executive | jwilliams@ljht.com.au

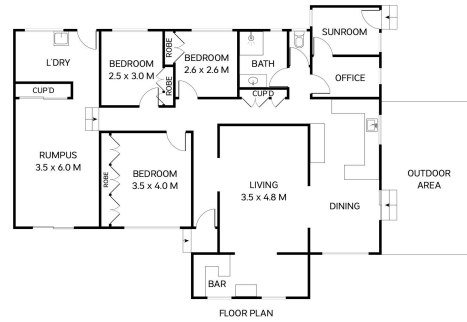
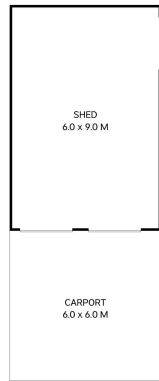
LJ Hooker Toowoomba (07) 4688 2222

Level 1, 677-683 Ruthven Street, TOOWOOMBA QLD 4350
toowoomba.ljhooker.com.au | toowoomba@ljht.com.au





SITE PLAN



27 Tomkinson Street
Wilsonton



This plan is for representational purposes only. All dimensions are approximate and shouldn't be solely relied upon. Floorplan created by Vue Digital.



Total: 169m²