



65 Fantail Crescent, Williams Landing

Corner Block in Coveted Neighbourhood

The Property

Welcome to 65 Fantail Crescent, Williams Landing. Beautifully maintained on a prime corner block with a majestic, west-facing, brick facade, this home is the epitome of modern grandeur. With a masterful design across a single level including four luxurious, carpeted bedrooms, a selection of sun-drenched living spaces, and gourmet kitchen, residents feel a sense of refined ease when relaxing at home or entertaining. Low maintenance lawns, established gardens, serene private backyard, and alfresco add incredible outdoor appeal. Situated in a welcoming location with quality local schools, transport links, shopping hubs, recreation reserves nearby, and Wyndham Waters Leisure Centre, this residence offers a contemporary family lifestyle like no other.

The Point of Difference

- A stately front porch welcomes you through double doors to a stunning entry with gleaming tiling underfoot, leading to a sunlit formal lounge with feature wall, and a vast open-plan living/dining/kitchen space, seamlessly flowing to the backyard through glass sliding doors for effortless indoor-outdoor access.
- Four carpeted bedrooms, each with a signature feature wall,

4 2 2

FOR SALE
\$930,000 - \$980,000

VIEW
By Appointment

AGENTS
Natalie Newdick
0451 992 994
natalie.newdick@ljhooker.com.au

Anu Sharma
0448 218 455
anu.sharma@ljhooker.com.au

AGENCY
LJ Hooker Point Cook
(03) 9975 7080

All information contained therein is gathered from relevant third parties sources.
We cannot guarantee or give any warranty about the information provided.
Interested parties must rely solely on their own enquiries.

LJ Hooker

include the elegant main boasting full ensuite with bathtub and immense walk-in robe, three remaining bedrooms offer built-in robes and are serviced by the pristine main bathroom with relaxing bathtub and separate toilet for added convenience.

- The well-appointed, stylish kitchen complete with 900mm stainless-steel appliances offers oven, cooktop, dishwasher, abundant stone-top bench space and plenty of storage, plus striking tile splash back.
- Substantial 526m2 (approx.) allotment adorned with low-maintenance established gardens and manicured lawns complemented by a charming alfresco attached to the main home for year-round entertainment, plus fruit trees and garden shed.
- Environmentally friendly features enhance efficiency and sustainability, including a Tesla home car charger, 6.5kW solar panel system, energy-efficient electric heat pump and split-systems in all living zones and bedrooms.
- Additional highlights include separate internal laundry, evaporative cooling, downlights, security system with alarm and 6 cameras, high ceilings, and double remote garage.
- Offering a lifestyle of leisure with exclusive access to the Wyndham Waters Leisure Centre with facilities including swimming pool, spa, sauna and steam room, BBQ area, and tennis courts.

The Point of Interest

A must-see opportunity for families seeking a life of coastal charm and suburban convenience, this home offers an active, fulfilling lifestyle with every essential close at hand including swipe card access to a nearby Leisure Centre with gym, swimming pool, tennis court, BBQ area, and function centre. Melbourne City and Altona Beach are just 30-minute (approx.) and 15-minute (approx.) car rides from home, respectively, while pristine parks within walking distance include Lawrie Emmins Reserve and Wyndham Waters Park. Zoned Dohertys Creek P-9 College and Truganina South Primary School offer esteemed educational facilities, while nearby childcare options add to family appeal. Local amenities are easily accessible with major shopping hubs, Tarneit and William's Landing train stations, and established bus routes contributing to overall convenience. Offering accessibility, luxury, and connection, this address delivers an ideal lifestyle.

Note. All stated dimensions are approximate only. Particulars given are for general information only and do not constitute any representation on the part of the vendor or agent. Any school zoning stated based on www.findmyschool.vic.gov.au as of 25/02/26.

MORE DETAILS

Property ID	2J3WHGH
Property Type	House
Land Area	526 m2
Including	Ensuite

Natalie Newdick 0451 992 994

Sales Executive | natalie.newdick@ljhooker.com.au

Anu Sharma 0448 218 455

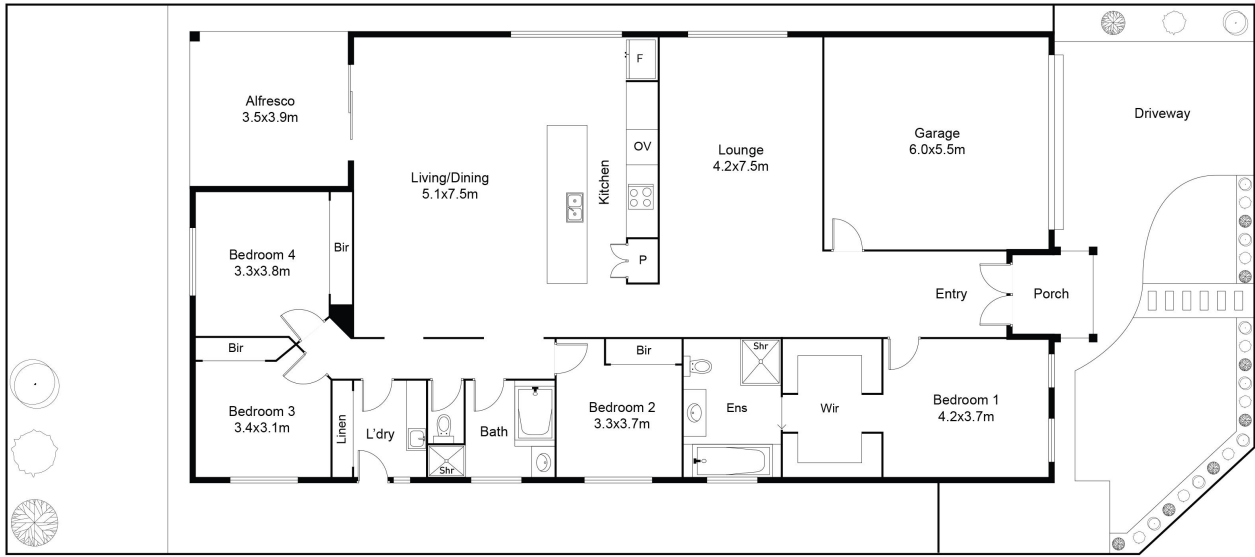
Sales Consultant | anu.sharma@ljhooker.com.au

LJ Hooker Point Cook (03) 9975 7080

Shop 211, 4 Main Street, POINT COOK VIC 3030

pointcook.ljhooker.com.au | pointcook@ljhooker.com.au





This floor plan including furniture, fixture measurements and dimensions are approximate and for illustrative purposes only. Realty Photos Wyndham gives no guarantee, warranty or representation as to the accuracy and layout. All enquiries must be directed to the agent, vendor or party representing this floor plan.



All information contained therein is gathered from relevant third parties sources. We cannot guarantee or give any warranty about the information provided. Interested parties must rely solely on their own enquiries.

