

## Williams Landing, 48 Merryfield Circuit

Spacious Family Home in Prime Williams Landing Location!

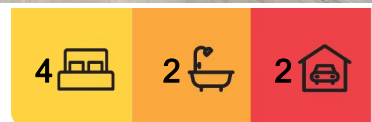
Welcome to 48 Merryfield Circuit, Williams Landing, where style, comfort, and practicality come together to create the ultimate family haven. Situated in a highly sought-after neighborhood, this property offers everything you need for modern living.

### Key Features:

- \* 4 Bedrooms: Generously sized rooms with built-in robes (BIR), including a master bedroom with walk-in robe (WIR) and ensuite for added privacy.
- \* Open Living Areas: Expansive living room (5.3m x 5.2m) seamlessly connected to the dining area, perfect for entertaining family and friends.
- \* Modern Kitchen: Equipped with quality appliances, ample bench space, and a pantry for all your storage needs.
- \* Covered Patio: A cozy outdoor space for year-round entertaining or relaxation.
- \* Double Garage: Spacious (5.6m x 6.0m) with internal access for convenience.



**Disclaimer:** All information contained therein is gathered from relevant third parties sources. We cannot guarantee or give any warranty about the information provided. Interested parties must rely solely on their own enquiries.



### For Sale

For Sale: \$680,000-\$748,000

### View

[ljhooker.com.au/NH8HC2](http://ljhooker.com.au/NH8HC2)

### Contact

**Yannie Hou**

0416 868 512

[yhou.rowville@ljhooker.com.au](mailto:yhou.rowville@ljhooker.com.au)

**LJ Hooker City Residential**  
(03) 9600 2166

\* Well-Appointed Bathrooms: Includes a central bathroom, separate WC, and laundry with additional storage.

Why You'll Love It:

- \* Located in a family-friendly area close to schools, parks, shopping centers, and public transport.
- \* Thoughtfully designed floor plan for maximum comfort and functionality.
- \* Low-maintenance yard, perfect for busy families or investors.

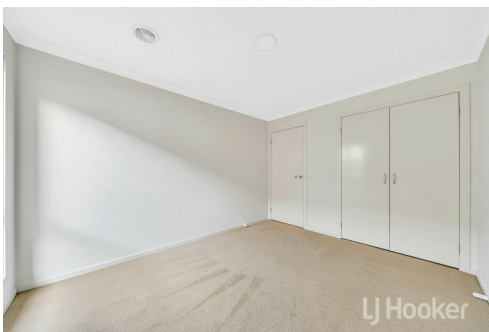
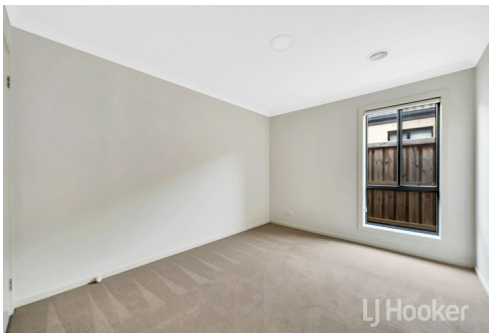
This incredible opportunity won't last long! Contact us today to arrange an inspection or visit one of our open homes.

More About this Property

Property ID	NH8HC2
Property Type	House

**Yannie Hou 0416 868 512**  
Senior Property Consultant | [yhou.rowville@ljhooker.com.au](mailto:yhou.rowville@ljhooker.com.au)

**LJ Hooker City Residential (03) 9600 2166**  
Upper Ground Floor, 439-445 Lonsdale St, MELBOURNE VIC 3000  
[cityresmelbourne.ljhooker.com.au](mailto:cityresmelbourne.ljhooker.com.au) | [cityresmelbourne@ljhooker.com.au](mailto:cityresmelbourne@ljhooker.com.au)

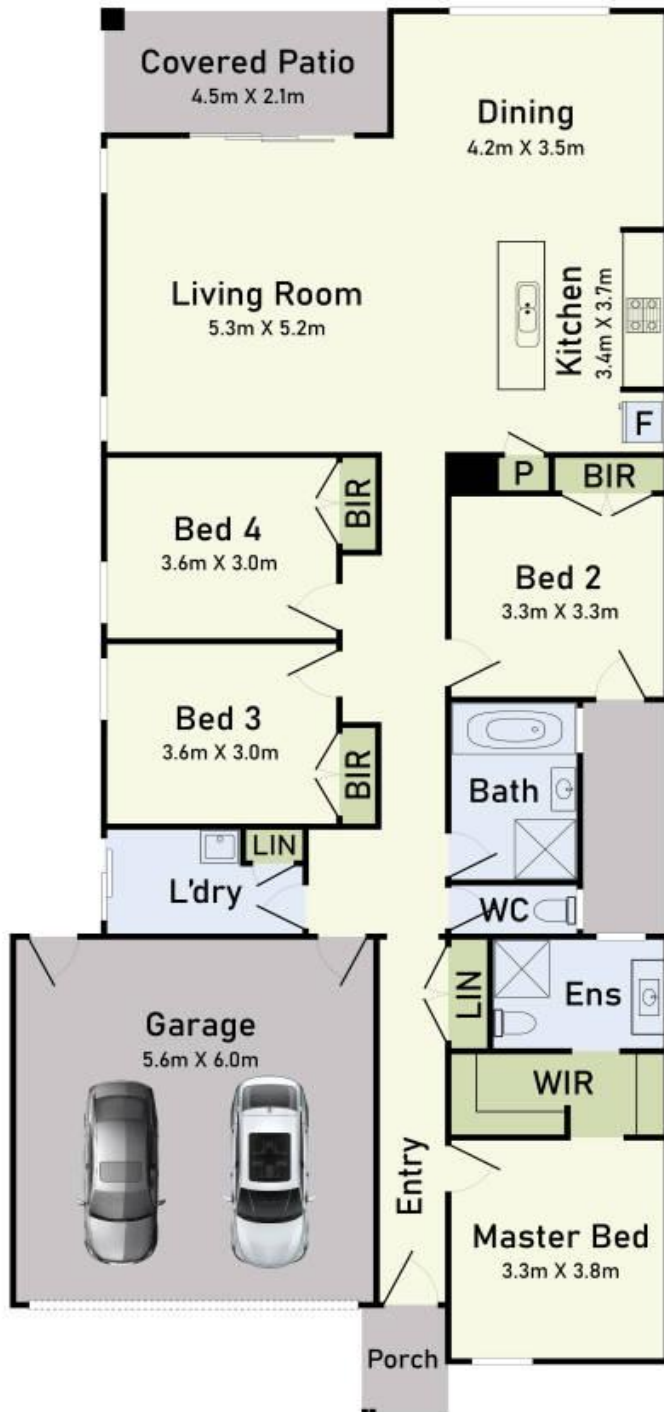


**Disclaimer:** All information contained therein is gathered from relevant third parties sources. We cannot guarantee or give any warranty about the information provided. Interested parties must rely solely on their own enquiries.

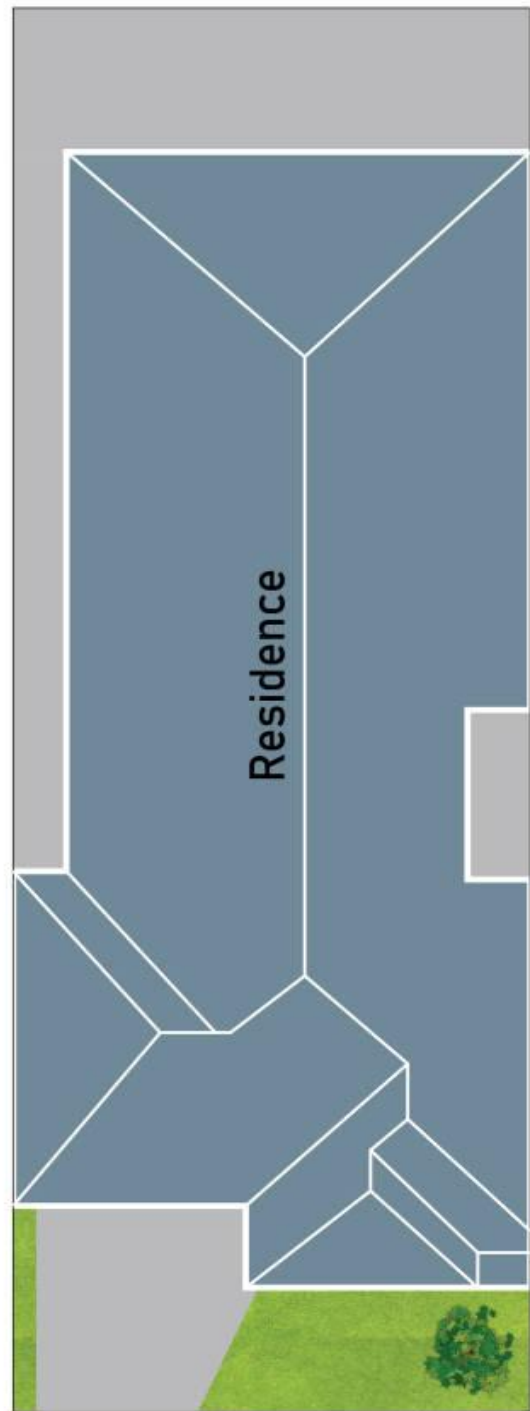
**LJ Hooker City Residential**  
**(03) 9600 2166**



## Floor Plan



## Site Plan



## 48 Merryfield Circuit, Williams Landing

\* Dimensions are approximate and for illustrative purposes only

