



Wiley Park, 6/60 Shadforth Street

SOLD by Muhammad Sarmini

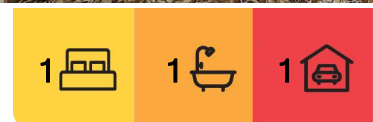
First Home or Investment Opportunity, Oversized Lock Up Garage

Welcome to your ideal first home or next savvy investment opportunity, perfectly situated in a highly sought-after and convenient location. Enjoying a sun-filled north aspect on elevated ground floor rear position with only one common wall, this generously proportioned apartment offers a wealth of potential to renovate to your creative taste and make it your own or maximise as an investment with strong rental prospects. Whether you're starting your homeowner journey or expanding your investment portfolio, secure this appealing entry level opportunity for those eagerly looking for a chance to enter the market, be quick!

- Generous oversized bedroom
- Spacious living area flowing on to sunny north facing balcony
- Separate large eat-in kitchen with dining area



Disclaimer: All information contained therein is gathered from relevant third parties sources. We cannot guarantee or give any warranty about the information provided. Interested parties must rely solely on their own enquiries.



For Sale
SOLD by Muhammad Sarmini

View
By Appointment

Contact
Muhammad Sarmini
0403 750 917
muhammad@ljhbl.com.au

LJ Hooker Belmore
(02) 9750 9244

- Well maintained bathroom with separate shower and bath, internal laundry
- Large windows provide bright and airy interiors
- Freshly painted throughout, only one common wall joined at bathroom
- Security building with intercom access
- Registered oversized lock up garage
- Total area 73.4sqm approx.

Conveniently located only 600m to Wiley Park station, 700m to Wiley Park Public School, 950m to Wiley Park Girls High School, 1.4km to main shopping strip including Woolworths Lakemba and vibrant array of cafes and restaurants, 2.8km to Bankstown Central shopping centre, 300m to recreational parklands of Parry Park and only 16km to Sydney CBD!

Address:6/60 Shadforth Street, Wiley Park

For Sale:SOLD

Contact:Muhammad Sarmini 0403 750 917



More About this Property

Property ID	8WQHRQ
Property Type	Apartment
House Size	73 m ²

Muhammad Sarmini 0403 750 917

Director | Selling Licensee-in-Charge | muhammad@ljhbl.com.au

LJ Hooker Belmore (02) 9750 9244

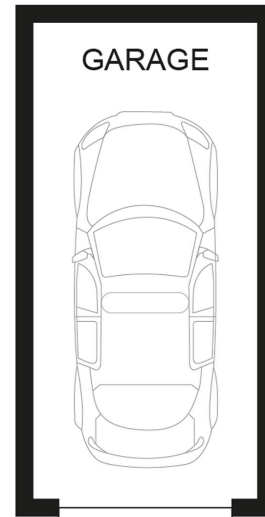
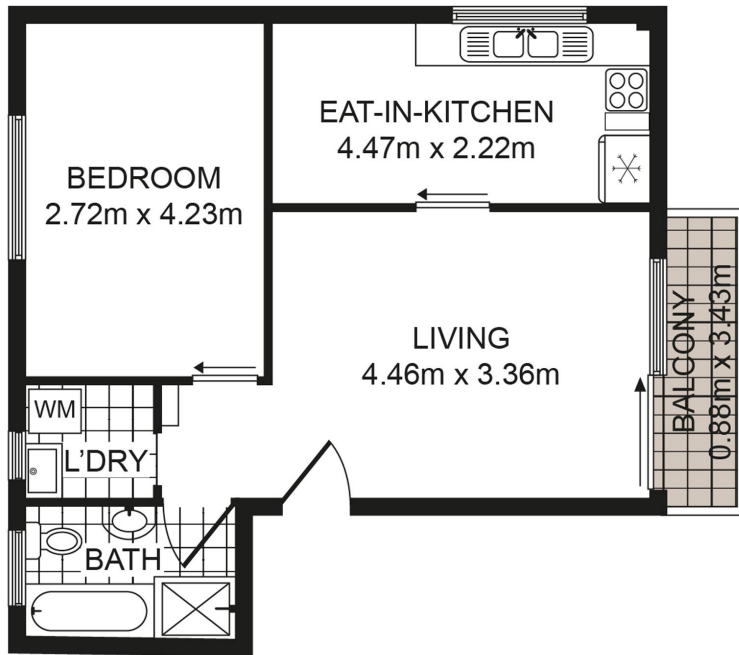
435-437 Burwood Road, BELMORE NSW 2192

belmore.ljhooker.com.au | info@ljhbl.com.au



LJ Hooker Belmore
(02) 9750 9244

Disclaimer: All information contained therein is gathered from relevant third parties sources. We cannot guarantee or give any warranty about the information provided. Interested parties must rely solely on their own enquiries.



(NOT IN POSITION)

6/60 Shadforth St, Wiley Park NSW 2195

Whilst every attempt has been made to ensure the accuracy of the floor plan contained here, measurements of doors, windows, room and any other items are approximate and no responsibility is taken for any error, omission or mis-statement. This plan is for illustration purpose only and should be used as such by any prospective purchaser. The service, systems and appliances shown have not been tested and no guarantee as to their operability or efficiency can be given.

LJ Hooker Belmore



LJ Hooker Belmore
(02) 9750 9244

Disclaimer: All information contained therein is gathered from relevant third parties sources. We cannot guarantee or give any warranty about the information provided. Interested parties must rely solely on their own enquiries.