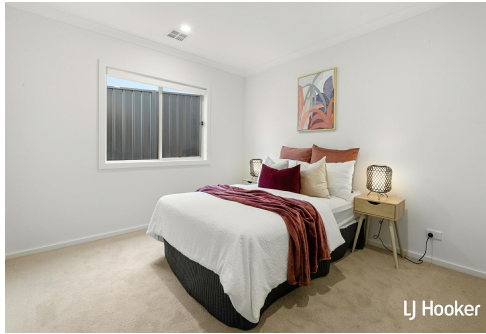




LJ Hooker



LJ Hooker



LJ Hooker

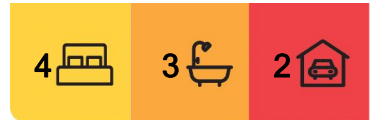
Whitlam, 19 Danaher Street

A Dream Family Retreat

Nestled in the picturesque hills of Whitlam, this brand-new architect-designed home is a true testament to modern luxury. Offering high-end finishes, expansive living spaces, and captivating views of the Molonglo Valley, this residence is the perfect blend of sophistication and comfort.

Key Features:

- * Open-Plan Living: Enjoy seamless living across two levels with multiple spacious living areas, providing flexibility for both family life and entertaining guests.
- * Beautiful kitchen with 40mm stone benchtops and butler's pantry.
- * High-End Inclusions & Finishes: Every detail has been carefully considered, with premium materials, cutting-edge fixtures, and exceptional craftsmanship throughout.
- * Ideal for Multi-Generational Living: The home is designed with multiple living zones, making it perfect for multi-generational families or those seeking extra privacy and space.
- * Breathtaking Views: Positioned in the hills of Whitlam, the property offers spectacular



For Sale
\$1,350,000

View
ljhooker.com.au/HNZZAF8H

Contact
Kathy Komar
0455 891 351
kkomar@ljhbelconnen.com.au

EER ★★★★★★

LJ Hooker Belconnen
(02) 6251 1477



Disclaimer: All information contained therein is gathered from relevant third parties sources. We cannot guarantee or give any warranty about the information provided. Interested parties must rely solely on their own enquiries.

views over the Molonglo Valley, providing a peaceful and scenic backdrop.

* **New Build:** As a brand-new home, you'll enjoy the benefits of modern design and contemporary conveniences without the need for renovations.

* **Great Location:** Enjoy easy access to Denman Prospect shops and a short drive to Belconnen Town Centre, ensuring all your shopping, dining, and entertainment needs are just moments away.

* **Generous Size:** Boasting a total house size of 288.87sqm (approx.) and a block of 480.00sqm (approx.), this home provides ample space for a growing family and a comfortable lifestyle.

* **Land Size:** 480sqm

* **Living size:** 288sqm

Disclaimer:

All information contained herein is gathered from external sources we consider to be reliable. However, we cannot guarantee or give any warranty about the information provided. Interested parties must solely rely on their own enquiries and satisfy themselves in all respects.

More About this Property

Property ID	HNZZAF8H
Property Type	House
House Size	288 m2
Land Area	480 m2
EER	6

Kathy Komar 0455 891 351

Sales Agent | kkomar@ljhbelconnen.com.au

LJ Hooker Belconnen (02) 6251 1477

Shop 9, 21 Benjamin Way, BELCONNEN ACT 2617

belconnen.ljhooker.com.au | belconnen@ljhbelconnen.com.au



Disclaimer: All information contained therein is gathered from relevant third parties sources.

We cannot guarantee or give any warranty about the information provided. Interested parties must rely solely on their own enquiries.

LJ Hooker Belconnen
(02) 6251 1477



19 Danaher Street, Whitlam

Disclaimer: Plans are indicative only and should be checked by the prospective purchaser. Plans shown are for presentation purposes and are not part of any legal document. All measurements and figures are approximate. The information herein is gathered from sources we believe to be reliable.



aperture
media house